

TABLE OF CONTENT

i. Executive summary	1-8
ii. List of abbreviations	9
1. INTRODUCTION	9-10
1.1. Context and Justification	10
1.2. Objectives of the Communal Development Plan	10
1.3. Structure of the CDP	10-11
2. MEHODOLOGY	
2.1. Preparation of the entire process	11
2.2. Collection and treatment of data	11
2.3. Data consolidation	11-13
2.4. Resource mobilisation	13-14
2.5. Programming	14-15
2.6. Putting in place participatory monitoring evaluation mechanism	15
3. SUMMARY PRESENTATION ON THE COUNCIL	
3.1. Location of the council	15
3.2. Description of the biophysical environment	15-19
3.3. History and People of the council (origin of the people, population, ethnic groups, religions, main economic activities)	19-23
3.4. Main Potentials and Resources of the Municipality	23-24
4. Financial Resources	
4.1 Elaboration process and follow up of the Budget	24
4.2 Budget structure for the past 3 years	24
5. STRATEGIC PLAN	
5.1. Vision of the Communal Development Plan	25
5.2. Objectives of the C.D.P	25
5.3. Council Institutional Diagnosis(CID)	26-29
5.4. State per village	30-43
5.5. Logical framework by Sector	44-79
5.6. Land Use plan	81
6. PROGRAMMING	
6.1. Resource mobilisation (identification and description of resources)	81-82
6.2. Mid Term Expenditure Framework (MITEF) for 3 years	83-96
6.3. Annual Investment Plan(AIP)	97-110
6.4. Estimated cost of C.D.P	111-112
6.5. Optimizing and/ or Mitigation measures	113
6.6. Optimization and Mitigation measures	114
6.7. Operational plan for vulnerable population	115
7. MONITORING AND EVALUATION MECHANISM	
7.1. Composition of the committee	116
7.2. Mission of the committee	116
7.3. Follow up plan tools and monitoring frequency	116
7.4. Review mechanism of the C.D.P	117
7.5. Review mechanism of the AIP	117
8. The council	118
9. COMMUNICATION PLAN OF THE CDP	119
10. CONCLUSION	119
11. ANNEXES	
LIST OF PHOTOS	

Executive summary

In elaborating the ISANGELE Council Development Plan [CDP] the council used the participatory planning approach recommended by PNDP. The ultimate purpose of the CDP is to guide the Council and all other development actors in the municipality in the MITEF [2015 – 2017] to achieve the goals and objectives inherent in the Vision 2035, GESP and the MDGs within the ISANGELE context.

The ISANGELE council executives worked with the population and stakeholders to achieve a greater understanding of the council especially with reference to its socio-economic situation, its biophysical situation, the impact and quality of its service delivery to the populations and its relations with other development actors who provide goods and services in the municipality.

The following specific objectives were to be achieved

1. To support a participatory diagnosis of the development situation in ISANGELE municipality
2. To collect data on the socio-economic situation and to identify, prioritize and analyze problems sector by sector at the levels of the village, urban space and the council institution.
3. To identify the main socio-professional groups.
4. To facilitate in the choice of priority micro projects.
5. To collect GPS waypoints of important social infrastructure in ISANGELE and to draw maps showing natural resources and social infrastructure.

The CDP has been elaborated within the context of the ongoing process of Decentralization in Cameroon, the Cameroon Vision 2035, the Growth and Employment Strategy Paper, the MDGs and the Policy of Great Realizations of President Paul Biya with a view to integrate the ISANGELE Municipality and populations in the grand plan of making Cameroon an emergent Nation of a medium economy by year 2035 wherein the current values of poverty will be significantly reduced and every Cameroonian will enjoy acceptable standards and quality of life and furthermore Cameroon will have a solid and sustainable industrial base and a democratic culture.

In this light, therefore, the CDP is a comprehensive short term development framework containing planned priority projects in the key growth infrastructure and production sectors; an annual investment and financial framework; a framework for collaboration and partnership between the council and stakeholders and partners; a governance framework for participation of the civil society and the private sector and external partners and is also a guide for systematic procedures to inform the management of ISANGELE development.

The CDP priority actions and micro projects for 2015 -2017

The CDP as a short term development framework for ISANGELE council has retained a series of priority actions and micro projects as enumerated:

- 1] Priority areas of actions at the council institutional level,
- 2] Priority projects per village per sector,
- 3] Priority micro-projects per sector in the council area. The efficient implementation of these actions and micro projects will significantly improve the institutional capacity of the ISANGELE Council and the production, infrastructure and equipment sectors which are the minimum necessary conditions for growth and employment to begin and thrive in ISANGELE. Some of these projects which have been evaluated include:
 1. The installation of a THERMAL PLANT FOR ELETRICITY
 2. WATER CATCTMENT
 3. Construction of Modern Fish Pond
 4. The acquisition of Transport Sea Bus
 5. Construction of 05 low cost houses

The CDP Structure

The CDP is divided into 2 main parts; the CDP and the Annexes.

1] There are ten separate though interrelated sub parts which describe in greater detail the Preparatory process; Methodology used to elaborate the CDP; Summary of the results obtained; Analysis of the results; Strategic planning; Operational planning; Socio environmental plan; Monitoring and evaluation plans; Information and communication plans and Annexes

Methodology

The methodological guide proposed by PNDP was used to elaborate the council development plan [CDP]. It included the following steps

- 1] The preparatory phase;
- 2] The participatory diagnosis
- 3] The planning phase
- 4] Resource mobilization
- 5] Programming
- 6] Implementation
- 7] Monitor and Evaluate

The preparatory phase

The CDP elaboration required careful preparation of sensitization and mobilization meetings with all the main stakeholders especially the Mayor and the Council executive, the councilors, the Sector heads, Administration, traditional and religious authorities, the elected representatives, youth and women groups, the elites, civil society and the private sector as well as partners inside and outside the municipality in order that everyone is fully aware of the planning process and the objectives and can participate actively and fully in the process.

The participatory diagnosis

Following the mobilization and sensitization meetings, the diagnosis proper was conducted with the aim of gathering all necessary information and data on the following:

- 1] Council Institution with focus on:
 - The personnel and Human resource management
 - The Financial management
 - The management of the council property and
 - Management of council relations with internal and external stakeholders
- 2] Council Urban Space with emphasis put on:
 - The socio economic aspects
 - The vulnerable populations
 - The economic actors
- 3] The villages, here much attention was laid on the identification of
 - natural resources
 - social services
 - the social infrastructure
 - the socio-economic situation per sector of development

During these participatory consultations the population were supported to identify the development gaps, determine their development problems sector by sector and the causes and effects on the people and for each problem, the solutions were proposed both at the local and council levels. On the basis of the identified solutions the needs were determined. Particular attention has been paid on the following sectors of significant impact on the growth and production in the rural sector:

- 1] Agriculture,
- 2] Water
- 3] Electricity,
- 4] Roads,
- 5] Basic education,
- 6] Secondary education.

Data and Information collection

The purpose of collecting data and information was to identify the assets and potentials and development problems and constraints within the municipality at the 3 levels and to determine which actions to take in order to exploit the potentials and to solve these problems.

The socio-economic data collection forms were given to sector heads and administered to the village populations to collect information and data necessary to identify the natural resources and other assets.

All data and information was measured against the sector standards where available especially for the sector infrastructure, equipment and facilities. The gaps between the collected data and information and the sector standards provided the basis for the formulation of the problems and identification of needs per sector

In summary, several tools have been used in the participatory diagnosis process which includes;

- 1) The SSI;
- 2) Meetings;
- 3) MITEF plan for three years 2015-2017;
- 4) The logical frames sector by sector;
- 5) The Annual Investment Plan (AIP) table facilitated in elaborating the activities to be executed on a yearly basis.

At The Village Level

The method used to collect and analyze data and information included:

1. Preparatory meetings with the village communities
2. Identification of potentials, natural resources, social infrastructure and sector by sector by use of the SSI
3. Analysis problems
4. Planning of local problems and solutions

At The Urban Council Level

1. Preparatory meetings with the urban communities
2. Identification of potentials, natural resources, social infrastructure and sector by sector by use of the SSI
3. Analysis problems
4. Planning of local problems and solutions

At The Level of the Council Institution (CID)

The method consisted of:

Team formation; Meetings; Identifying the resource persons to be contacted; Identifying the list of documents for secondary data collection on; Personnel and human resource management; Financial Management; council property and assets management; Management of relations with other stakeholders

The method used to collect the data and information included

Formal and informal Meetings, Direct observation, interviews and discussions, Use of forms for secondary data and information collection, Work plan and SSI to sector heads

And consisted of

- collecting information concerning the administrative, financial, property as well the personnel and human resources of the council as an institution
- analyzing and describing the structure and mode of functioning of the various organs of the council
- analyzing the relations between the council as an institution and the state and non state actors of development at the local level
- Identifying the strengths and weaknesses by means of auto evaluation undertaken by the council staff, elected and personnel.
- Identifying the main axes/actions of reinforcement for the council to meet its statutory roles and competence.

These methods were supplemented by in-depth examination and review of:

- 1) Minutes of several staff meetings,
- 2) List of councilors,
- 3) List of technical committees,
- 4) Minutes of meetings of technical committees,
- 5) Reports of follow up activities of the council,
- 6) List of provisional budgets,
- 7) Copies of development plans,
- 8) Inventory situation,
- 9) Correspondences,
- 10) Partnership or collaboration conventions,
- 11) Available statistical data and Reports of surveys.

Personnel situation

The staff and pay roll, the organizational chart compared to the official organigramme from MINATD.

Budgets for 3 years

Administrative and financial accounts for 3 years

2. Analysis of Data Collected

Information and data collected during the preparatory and participatory diagnosis phases of the council institutional diagnosis were analyzed in order

- to determine and identify the personnel situation with respect to its division of labor, the types of contracts, salaries, human resource policies etc
- to assess the composition and functions of the various council organs {council executive, the municipal council]
- To assess the budget elaboration process
- To analyze the budget structure
- To assess the revenue collection procedures
- To assess the administrative and financial accounts of the last 3 years
- To assess the current council development plan
- To evaluate the council property and assets management plan
- To assess the management of relations
- To identify the constraints of the council [social, economic, environmental, cultural and political]
- To identify the opportunities of the council [social, economic, environmental, cultural and political]
- To determine the strengths and weaknesses of the council as an institution and a development institution charged with providing goods and services for the improvement of the standards of living and the quality of life of its populations.
- Data was analyzed on the basis of numbers and types of personnel and human resources, types and amounts of revenues and expenditures and investments and the nature, mechanisms and content of the relations the council has with organizations and institutions within and out of the ISANGELE Municipality.
- To identify areas for reinforcement and improvement within the council.

Restitution and validation of collected data

All data and information as well as the analyses were restituted and validated during meetings with all the stakeholders

Consolidation of Diagnosis results was done by using

1. Village needs excel forms per infrastructure type.
2. Consolidated data excel forms per sector
3. Restitution and validation meetings. A meeting including the council executives, sector heads community leaders and the population.

Elaboration of a sustainable Land Use Plan

With information and data gathered including natural resources, residential areas, social mobility, the community members indicated in the village how the remaining land and forest in the village will be used.

Planning Meeting

Preparation activities included

- Meeting and discussions with Council Executives
- Meeting with Administration
- Identifying the main resource persons and key actors to be invited to participate in the planning meeting
- Preparation of logical frames per sector and sending them to sector heads for validation

Planning meeting

The main activities included the detailed examination of the sector logical frames by the sector heads. This involved the critical examination of each sector within the context of ISANGELE municipality, identification of the problems, prioritization of the problems, identification of the causes, examination of the pertinent causes, determination of the effects on the populations, determination of the local solutions and local needs.

Resource mobilization

The method used consisted of initially determining the:

1. Type of resources needed i.e. human, material and financial and
2. Level of mobilization i.e. municipality and external levels and finally
3. Strategy of the mobilization of the concerned key stakeholders and key actors of mobilization who include state representatives, sector heads, technical and financial partners, technicians, political and traditional authorities and the general population.

The possible sources of financing and the mechanisms for their mobilization is shown in the table below

	Community	External Resources		Strategy of mobilization
Human Resources	Local populations	Nationals outside the municipality	Populations abroad	Identified actors and groups that can be used. A training plan [training themes, targeted public Expected results Duration Budget
	Individual skills			
	Organized human skills			
Financial Resources	Taxes and tax related resources Council generated revenue	PIB State subventions FEICOM PNDP SOWEDA and RUMPI CAC Other taxes	Decentralized cooperation Foreign assistance	Initiate moves to access probable grants, subventions and credits Information and sensitization of Local populations on the importance of their contributions Tax recovery.
Material Resources				

Programming

The programming was carried out by:

- 1) Identifying the priority lines of action on the basis of the CID, USD and VPD priority projects
- 2) Elaborating the MITEF
- 3) Elaborating the AIP
- 4) Elaborating a simple environmental management plan.

The prioritized projects have been scheduled and timed along a budgetary investment cycle of 3 years. The social and environmental impact plans of the micro-projects to be executed have also been planned.

Implementation of participatory monitoring and evaluation mechanism

At the Community Level

In order that ownership and sustainability of the plan are internalized by the village community a local control and coordination committee for each micro project was set up. This was preceded by conducting a stakeholder analysis at the village and urban space levels.

At the Council Level

The council has been reinforced with the recruitment of a COUNCIL DEVELOPMENT OFFICER and expanded to include councilors and sector heads to carry out monitoring and evaluation during the implementation phase.

General Observations and Recommendations

The socio-economic situation of ISANGELE is structurally deficient and very weak which contrasts significantly with its rich bio-physical characteristics and abundance of important assets. ISANGELE like most of the council areas in the Bakassi peninsula has suffered serious setbacks in their growth partly because of the armed border conflict of the 90s and 2000 but more especially because of an acute neglect of the area as in the case in most border areas in the South West Region. The area will soon take a kick-off for the collection of taxes as signed by the government. The ambient atmosphere of social insecurity is a great and increasing call for concern.

Population needs

The deplorable socio economic situation has provoked conditions of acute needs among the populations responsible for the generalized misery, suffering and poverty which are so rife in the municipality. Paramount among which are the scarcity of food and other household goods, water, electricity housing and roads. By every indicator of the Millennium Development Goals [MDGs] the prospects to achieve them are very infinitesimal. From the point of view of the Growth and Employment Strategy Paper [GESP] the state has to develop special programmes to ensure that growth and employment can find appropriate conditions to begin and thrive.

Major sector challenges

The major challenge ISANGELE Council faces is the daunting task of transforming its current traditional rural economy with its structural deficiencies and weaknesses in all the sectors into a transition economy characterized by an industrial and service rural economy capable of transforming its natural resources into secondary materials and its assets into services for a potential local industry capable of producing household and export goods and services which will be equitably distributed among its population. ISANGELE has a high growth potential in the agricultural, forestry and fishing sectors, the exploitation of which has been impeded by huge lack of the major factors of production like trained human resources, infrastructure, electricity, roads, water and financing are a sure recipe for failure of any well elaborated Council development plan [CDP]. These structural challenges have been adequately addressed sector by sector in this CDP in consideration of the production factors, the biophysical assets and the human resources needs.

Opportunities of the CDP

The CDP has identified and sufficiently described the huge number of opportunities in ISANGELE for rapid sustainable development. Of particular importance is the abundance of fish in the huge expanses of mangrove creeks and waters. The forests are abounding with timber, wildlife and NTFPs. The climate and rainfall are very suitable and the soils are fertile for plantation and medium and large scale farming agriculture. Speculation of sub soil and off shore deposits of petroleum is rife as is the case in the Bakassi Peninsula. But most importantly is the strong political will of the Government of Cameroon [GoC], international community [IC] and many other development partners to support the development of the Bakassi Area

Threats to the CDP

The main obstacle to implementing the CDP will be more due to weak sector and council expenditure capacity than to lack of resources. Institutional and in particular governance shortcomings are responsible for the particularly weak revenue effectiveness. The transferred resources mobilized by the central government to councils and the deconcentrated services provide public service delivery which falls far short of what might be achieved. The ISANGELE council revenue collection is lamentably weak and narrow based. The vast proportion of its revenue is from the state. This situation is worrisome given that this source cannot ensure for adequate financing for the provision of the productive factors in the short term. The ISANGELE council must therefore mobilize finances from other credible sources in order to implement this CDP. The annual budget suffers from lack of clarity, thoroughness and practicality. The lack of a business community is a huge threat that must be tackled so as to attract business women and men given ISANGELE potential. However the major threat that

looms is the insecurity due to the frequent armed attacks on people and goods supposedly perpetrated by foreign nationals.

A Dual Track Implementation approach of the CDP

The major aim of the CDP is to achieve growth and employment in ISANGELE. During the strategic and operational planning a lot of emphasis has been laid on investment in sectors that are susceptible to usher in growth and employment. A dual track approach i.e. a growth strategy alongside an employment strategy is strongly recommended for implementation of the CDP. This underlines the need to ensure that the contracts are awarded to competent enterprises and in good time.

The Growth Plan

This can be summarized as follows: “INVEST IN INFRASTRUCTURE, IMPROVE PRODUCTION SECTOR AND DEVELOP HUMAN RESOURCES” Areas of investment include Agriculture, electricity, Water, roads and maritime transport, Telephone networks, Urban Development and Housing; Land. Improvement of the production sector includes agriculture, fisheries, Forestry, Trade and Petroleum exploitation. Human resources development is crucial in the CDP implementation. Therefore sector strategies on health, education and vocational training should be of particular attention to the local authorities with special emphasis on youth and women. The development of the border market with Nigeria and the CEMAC countries will reinforce production and growth and contribute to financing the ISANGELE economy.

The Employment Plan

Like the growth plan the employment plan can also be summarized as follows: “INCREASE EMPLOYMENT OPPORTUNITIES, MATCH TRAINING WITH JOB PROFILE AND IMPROVE EMPLOYMENT MARKET”. Agriculture, Fishing and Tourism hold enormous prospects for employment opportunities. The land is very fertile and suitable for large scale farming and plantation agriculture. The mangrove creeks and the waters are a huge source for fish and tourism. The employment opportunities in agriculture, fishing and tourism are innumerable. In this connection the training programmes and the personnel of the Vocational Training Center in Bateka, the Womens' Center in Amoto and the Youth Center which will be constructed this financial year (2015) should be redesigned to match the profiles of the job potentials in agriculture, fishing and tourism.

CDP Implementation

The Council is the main implementer of the CDP in concurrence with the sector heads, private sector, civil society and external development partners. It is in this light that COMES has been set up as the main institutional framework to supervise the implementation of the CDP. Its main role is to

- Supervise overall implementation of the CDP,
- Check the regularity of sector activities and the priorities in the CDP
- Mobilize the resources necessary for its implementation, thus
- Orientate budgetary programming and
- Assess implementation results, effects, and impacts on the council's economic and social development.
- Implement the monitoring and evaluation plans
- Carry out the communication plan.

Monitoring/evaluation mechanism

The implementation of the CDP requires reliable information to be produced in order to better assess the implementation of planned objectives, activities and utilization of resources and the results being obtained. The information so collected will be frequently communicated to all stakeholders. A communication plan of the CDP has been set up. It will be achieved through information sharing, sensitization and awareness campaigns, participation in and appropriation of the process by all the development actors and beneficiaries for better results. Plans are afoot for the council to acquire computers and internet facilities where this information will freely circulate. The community radio network is another medium for circulating information on the CDP implementation

List of abbreviations

CDP: Council Development Plan
CEFAM: Local Copuncil Training Center
CID: Council Institutional Diagnosis
CIG: Common Initiative Group
CUSD: Council Urban Space Diagnosis
DO: Divisional Officer
FEICOM: Local Council Support Fund
GNS: Government Nursery School
GOC: Government of Cameroon
GPS: Global Positioning System
G.B.H.S: Government Secondary School
MDG: Millennium Development Goals
MINADER: Ministry of Agriculture and Rural Development
MINDSN: Ministry of Defense and National Security
MINEE: Ministry of Energy and Water
MINEPIA: Ministry of Livestock, Fisheries and Animal Industries
MINFOF: Ministry of Forestry and Wildlife
MINTP: Ministry of Public Works
MUDEC: Group Municipal Development Counseling Group
NTFPs: Non-Timber Forest Products
PAID-WA: Pan-African Institute for Development- West Africa
PNDP: National Community-Driven Development Program
S.G SOC: SG Sustainable Oil Cameroon Limited
SAR/SM: Vocational Training Center
SDO: Senior Divisional Officer
SSI: Semi-structures Interviews
TOR: Term of Reference
VD: Village Diagnosis
PIB: Public Investment Budget

1- INTRODUCTION

1.1. Context and Justification

On January 18th, 1996 Cameroon adopted a new constitution transforming it into a unitary decentralized state with Regional and Local Councils. The Councils promote the economic, social, health, educational, cultural and sports development of their populations. Several legal and administrative instruments are in force and in particular law on Orientation N°2004/018 of 22nd July 2004 defining the powers devolved to councils for the economic development with emphasis on contributing to the electrification of areas inhabited by the poor, building, equipment, management and maintenance of markets, bus stations and slaughter houses, development of local touristic attractions, provision of portable water, constructing and maintaining of unclassified rural roads and ferry boats organizing local trade fairs, provision of support to income and job generating micro projects, development of local agricultural, pastoral, handicraft and fish farming activities protection of underground and surface water resources

The decentralisation process has become more operational in the year 2010 and the following decrees gave legal authority to it:

- Decree N° 2010/0242/PM of 26th February 2010 with regards to the promotion of agricultural production activities and rural development.
- Decree N° 2010/0242/PM of 26th February 2010 with regards to the promotion of livestock and fish farming activities.
- Decree N° 2010/0242/PM of 26th February 2010 with regards to the construction and maintenance of rural unclassified roads and with regards to potable water supply in the zones not covered by the public network for the distribution of water conceded by the State.

To this effect the Government of Cameroon, mindful of the Millennium development goals drew a development green paper, the **Vision 2035 and the Growth and Employment Strategy Paper**. The Local councils are charged with the responsibility of planning and implementing development activities at the local level.

In order to enhance the decentralization process, aligned on the Vision 2035, the GoC since 2010 started transferring competences to the Local Councils in various sectors. In order to support local development and the councils in the ongoing decentralization process the GoC has embarked on council institutional reforms and capacity building since 2005. To this effect the GoC signed a financial facility with its partners to establish a decentralized financing system, **the National Community Driven Development Programme [PNDP]**, as one of the strategies to finance development projects within rural councils.

1.2. Objectives of the Communal Development Plan

1.2.1. Global objective

The objective of the CDP is to contribute to a greater understanding of the council especially with reference to the socio-economic situation of the council, the impact and quality of the service delivery to the populations and the relations of the council with other development agents and who provide goods and services in the council urban space.

1.2.2. Specific objectives

1. To support a participatory diagnosis of the development situation in ISANGELE municipality
2. To strengthen the strategic planning and operational capacities of the council executive particularly in the elaboration and implementation of a Council Development Plan.
3. To collect data on the socio-economic situation and to identify, prioritize and analyze problems sector by sector at the levels of the villages, urban spaces and the council support in the elaboration of their strategic development plan.
4. To identify the main socio-professional groups and put in place development management committees
5. To facilitate in the choice of priority micro projects.
6. To collect GPS waypoints of important social infrastructures in ISANGELE and to draw a map of ISANGELE showing its natural resources and social infrastructures.

7. To strengthen the institutional and organizational frameworks of governance at the council level with particular emphasis on communication and involvement of the youths, women and the civil society in council affairs.

1.2. Structure of the CDP

The CDP is divided into 2 main parts; the CDP and the Annexes.

- 1] In the first part there are ten separate though interrelated sub parts which describe in greater detail the Preparatory process; Methodology used to elaborate the CDP; Summary of the results obtained; Analysis of the results; Strategic planning; Operational planning; Socio environmental plan; Monitoring and evaluation plans; Information and communication plans and Annexes
2. The second part of the document is made up of two separate documents: The consolidated diagnosis report, the maps and pictures.

3. MEHODOLOGY

The methodological guide proposed by PNDP has been used to elaborate the council development plan [CDP] the conduct of which involved the rigorous use of 5 of its 7 distinct phases namely

1. The preparatory phase
2. The participatory diagnosis
3. The planning phase.
4. Resource mobilization
5. Programming
6. Implementation7. Monitoring and Evaluation

2.1. Preparation of the entire process

The main activities carried out were

- 2.1.1. Team formation
- 2.1.2. Contact meetings with the Municipal executives
- 2.1.3. Information and sensitization meetings with the local authorities
- 2.1.4. Information and sensitization meetings with other stake holders

2.2. Collection and treatment of data

A] Primary Data Collection

2.2.1. At the Village Level

The method used to collect and analyze data and information included

- 2.2.1.1. Preparatory meetings the village communities
- 2.2.1.2. Identification of potentials, natural resources, social infrastructure and sector by sector by use of the SSI
- 2.2.1.3. Analysis of problems and prioritized them
- 2.2.1.4. Planning of local problems and solutions

2.2.2. At the Urban Council Level

- 2.2.2.1. Preparatory meetings the urban communities
- 2.2.2.2. Identification of potentials, natural resources, social infrastructure and sector by sector by use of the SSI
- 2.2.2.3. Analysis of problems and proposed solutions
- 2.2.2.4. Planning of local problems and solutions

2.2.3. At the Level of the Council Institution (CID)

The method consisted of;

Preparatory Activities of the CID

- 1) Team formation
- 2) Meetings
- 3) Identifying the Resource persons to be contacted
- 4) Identifying the List of documents for secondary data collection on
- 5) Personnel and human resource management
- 6) Financial Management
- 7) Council property and assets management 8] Management of relations with other stakeholders

2.2.3.1. The method used to collect the data and information included

- 1) Formal and informal meetings.
- 2) Direct observation, interviews and discussions
- 3) Use of forms for secondary data and information collection
- 4) Work plan
- 5) SSI to sector heads

And **consisted of**

- collecting information concerning the administrative, financial, property as well the personnel and human resources of the council as an institution
- analyzing and describing the structure and mode of functioning of the various organs of the council
- analyzing the relations between the council as an institution and the state and non state actors of development at the local level
- Identifying the strengths and weaknesses by means of auto evaluation undertaken by the council staff, elected and personnel.
- Identifying the main axes/actions of reinforcement for the council to meet its statutory roles and competence.

B) Secondary Data Collection

These methods were supplemented by an in-depth examination of;

- 1) Minutes of several staff meetings
- 2) List of councilors
- 3) List of technical committees
- 4) Minutes of meetings of technical committees
- 5) Reports of follow up activities of the council
- 6) List of provisional budgets
- 7) Copies of development plans
- 8) Inventory situation
- 9) Correspondences
- 10) Partnership or collaboration conventions
- 11) Available statistical data
- 12) Reports of surveys.

Personnel situation

- 1) The staff and pay roll
 - 2) The organizational chart
 - 3) The official organigramme from MINATD
- Budgets for the past 3 years
Administrative and financial accounts for the past 3 years
-

2.2.3.2. Analysis of Data Collected

Information and data collected during the preparatory and participatory phases of the council institutional diagnosis were analyzed together in order;

- 1) To determine and identify the personnel situation with respect to its division of labor, the types of contracts, salaries, human resource policies etc
- 2) To assess the composition and functions of the various council organs {council executive, the municipal council]
- 3) To assess the budget elaboration process
- 4) To analyze the budget structure
- 5) To assess the revenue collection procedures
- 6) To assess the administrative and financial accounts of the last 3 years
- 7) To assess the current council development plan
- 8) To evaluate the council property and assets management plan
- 9) To assess the management of relations
- 10) To identify the constraints of the council (social, economic, environmental, cultural and political)
- 11) To identify the opportunities of the council (social, economic, environmental, cultural and political)
- 12) To determine the strengths and weaknesses of the council as an institution and a development institution charged with providing goods and services for the improvement of the standards of living and the quality of life of its populations.

13) Data was analyzed on the basis of quantities and types of personnel and human resources, types and amounts of revenues and expenditures and investments and the nature, mechanisms and content of the relations the council has with organizations and institutions within and out of the ISANGELE Municipality.

14) To identify areas for reinforcement and improvement within the council.

2.2.3.3. Restitution meeting with;

- 1) The council executives,
- 2) Some councilors,
- 3) Some sector heads,
- 4) Representatives of women and youth groups,

2.3. Data consolidation

Data and information consolidation was done by using

- 1) Village needs excel forms infrastructure by infrastructure
- 2) Consolidated data excel forms sector by sector
- 3) Restitution meeting including the sector heads, council executive, some councilors, community leaders, representatives of women and youth groups
- 4) The GPS waypoints were analyzed and presented in tables village by village. Mainly the infrastructure and physical resources were recorded.

The main activities included the detailed examination of the log frames sector by sector by sector heads and the strategic planning. This involved the critical examination of each sector within the context of ISANGELE municipality, identification of the problems, prioritization of the problems, identification of the causes, examination of the pertinent causes, determination of the effects on the populations, determination of the local solutions and local needs.

2.4. Resource mobilization

The method used consisted of initially determining the:

1. Type of resources needed and subsequently
2. Level of mobilization and
3. Strategy of the mobilization of the concerned key stakeholders and key actors of mobilization who include state representatives, sector heads, technical and financial partners, technicians, political and traditional authorities and the general population.

Sources of financing and the possible mechanisms for their mobilization included

- 1] The Poll tax
- 2] Income tax,
- 3] BIP, DGD, CAC, C2D
- 4] PNDP allocation,
- 5] Diverse charges,
- 6] Decentralized cooperation,
- 7] Other sources)

This process is shown in the table below.

Table 1. Resources Mobilization

	Community	External Resources		Strategy of mobilization
Human Resources	Local populations	Nationals outside the municipality	Populations abroad	Identified actors and groups that can be used.
	Individual skills			A training plan [training themes, targeted public
	Organized human skills			Expected results Duration Budget
Financial Resources	Taxes and tax related resources Council generated revenue	PIB State subventions FEICOM PNDP SOWEDA and RUMPI CAC Other taxes	Decentralized cooperation Foreign assistance	Initiate moves to access probable grants, subventions and credits Information and sensitization of Local populations on the importance of their contributions Tax recovery.
Material Resources				

Financial Resources

A list of the various potential and existing sources of financing resources was presented for discussions as well as the mechanisms to mobilize the resources. These sources included

- 1) Council revenue,
- 2) The Public investment budget [PIB],
- 3) The Council Centimes.
- 4) Various taxes
- 4) PNDP
- 5) FEICOM
- 6) Decentralized cooperation.
- 7) SOWEDA and RUMPI

2.5. Programming

The programming was carried out by

- 1 Identifying the priority lines of action on the basis of the CID, USD and VPD priority projects
- 2 Elaborating MITEF
- 3 Elaborating the AIP
- 4 Elaborating a simple environmental management plan.

With the validation of the logical frames and identification, analysis and prioritization of the development problems in the council as an institution, the urban space and villages, sector by sector, the needs and micro projects were determined as well as the prioritization of their solutions. Having determined the prioritized projects, participants examined the scheduling and timing of the projects on a budgetary investment cycle of 3 years.

The participants further examined the social and environmental impacts of the micro-projects which must be taken into account during project execution.

2.6. Putting in place of a participatory monitoring and evaluation mechanism.

A] At the Community Level

In order that ownership and sustainability of the plan are internalized by the village community, a local control and coordination committee for each micro project was set up. This was preceded by conducting a stakeholder analysis at the village and urban space levels.

B] At the Council Level

The recruitment of a COUNCIL DEVELOPMENT OFFICER has been reinforced and expanded to include other councilors and sector heads, private sector and civil society to carry out the monitoring and evaluation of the CDP

3. SUMMARY PRESENTATION ON THE COUNCIL

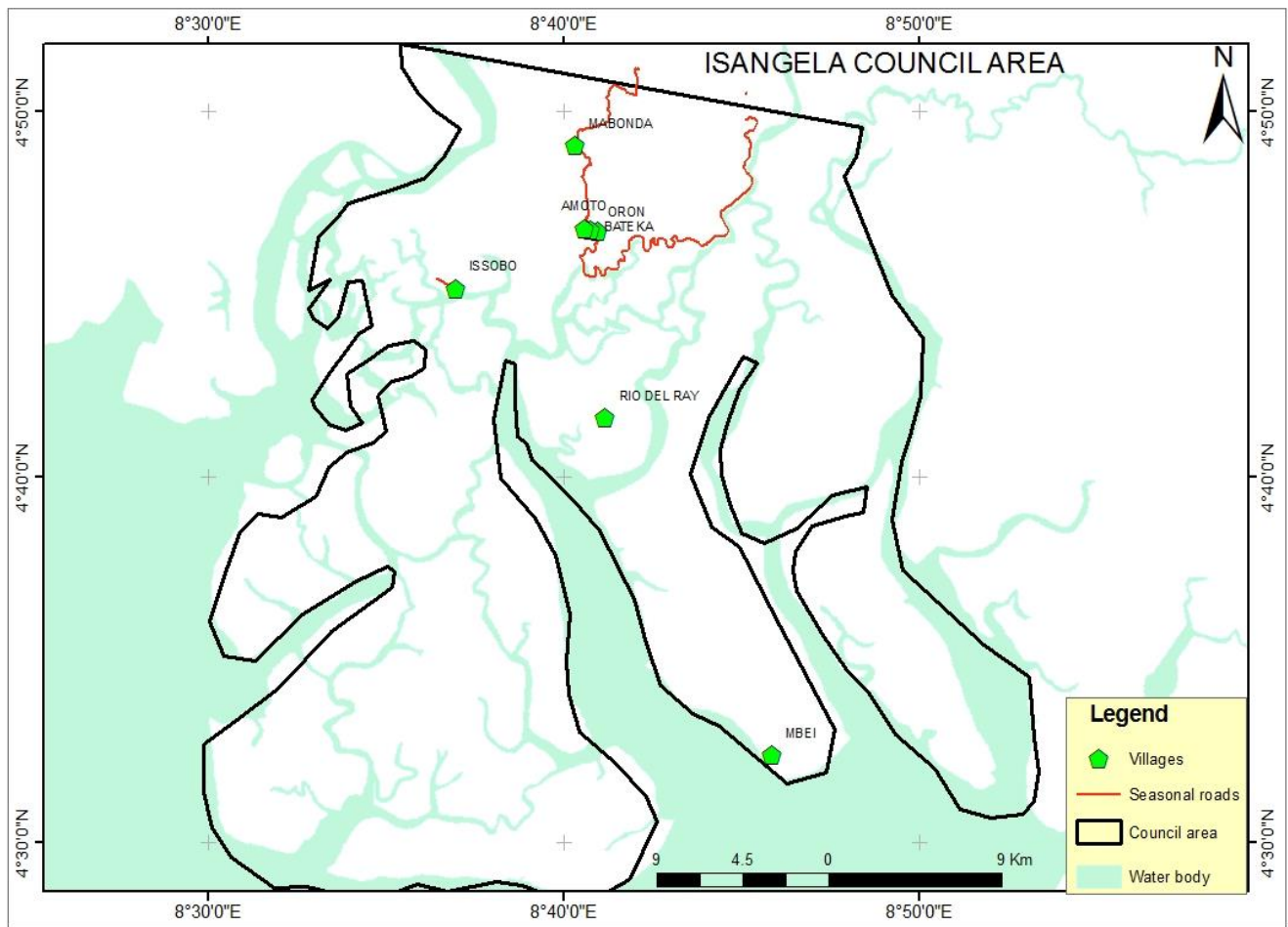
3.1. Location of the council

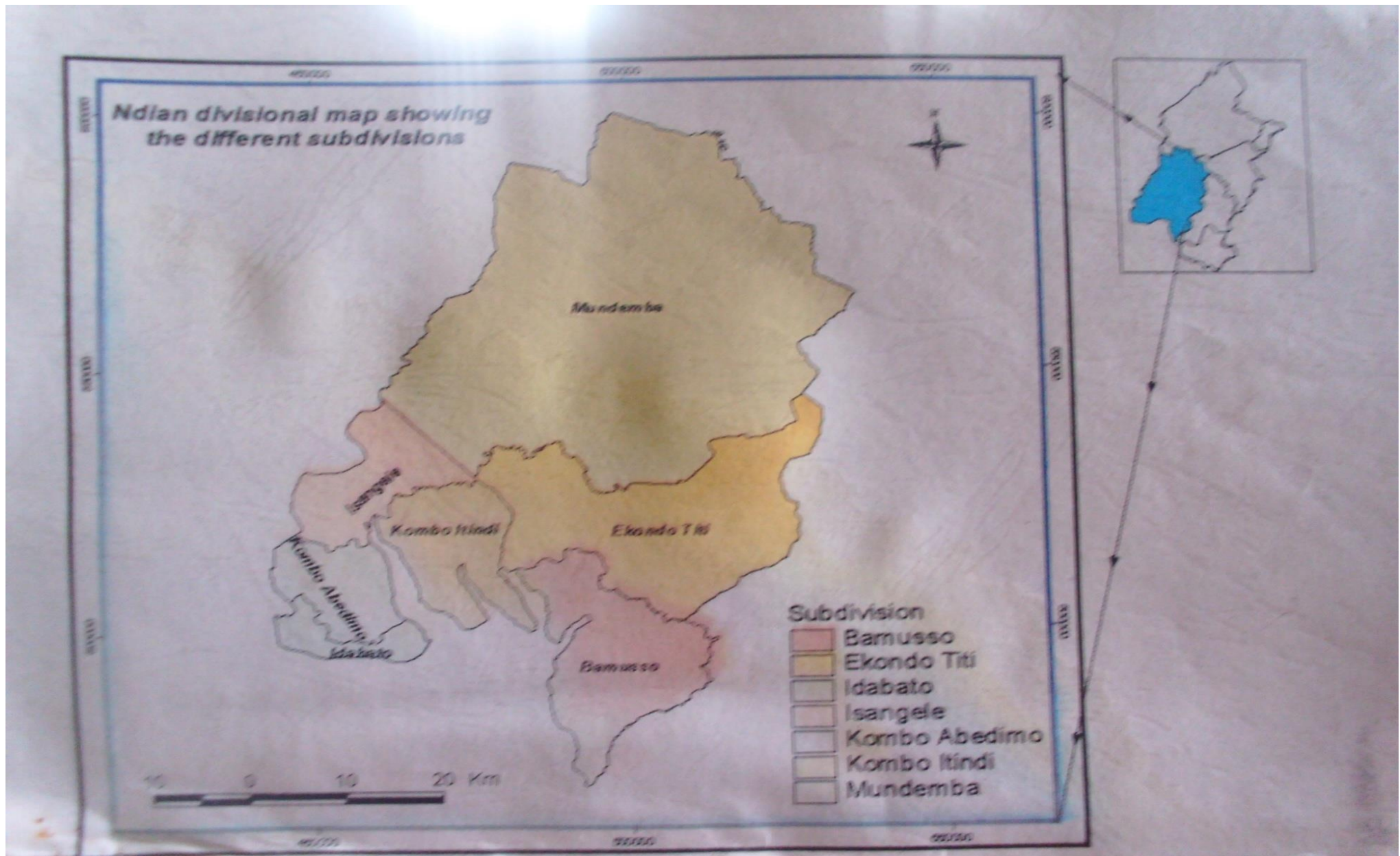
The ISANGELE Council is located in the South West Region of Cameroon in the Ndian Division with boundaries as follows:

Mundemba council to the North East; Nigeria to the North and North West; Komboltindi to the East; Kombo Abedimo to the South

It lies roughly in the East between 8.30° and 8.55° and in the North between 4.3 and 4.52 degrees.

Map 1. ISANGELE COUNCIL AREA





3.2. Description of the biophysical environment

3.2.1. Climate

Generally of the equatorial type with two main seasons; a short dry season of about four months [November to February] and a long rainy season [March to October] and is purely a maritime type, wet most of the seasons with an average temperature of 25°C to 35°C. The rainfall is generally heavy and ranges between 7,000 mm and 12,000 mm fairly evenly distributed within 8 months. The relative humidity consequently is very high above 75%. The short dry and long rainy season, high temperatures, high rainfall, high relative humidity suitable for diverse agriculture.

3.2.2. Soils

Sandy and clay soils are clay and sandy making them acid soils which are very suitable for farming especially the cultivation of cassava, egusi, maize, cocoa, pineapples, and yams currently being practiced. Oil palms and Rubber can also be cultivated here. However there is severe erosion due to the intense rainfall. The roads easily deteriorate with the effect that ISANGELE Mundemba road is impassible during the rainy season leaving the only option of the irregular, risky and costly maritime transport.

These soil types pose very serious problems for the construction of ordinary wells and latrines as well as roads and paths. The heavy rains over a long period in the year favor the caving in of wells and pit latrines and severe erosion of roads and land. On the other hand these soil types, the high humidity, the high temperature and high rainfall are suitable for commercial agriculture and cultivation of cassava, plantains, banana, yams, maize, egusi, pineapple, pawpaw, pepper, vegetables and many other food crops. ISANGELE lands are also suitable for the cultivation of cash crops such as cocoa, palms and rubber.

3.2.3. Relief

Hills, steep slopes, deep valleys, low lands, rugged and undulating surfaces. The dominant physical feature of the municipality is virgin forest with large mangroves. Islands (creeks) covering an area of about 765 km². the vegetation is mixed with secondary and virgin forest. Vegetation cover of the area is dominated by Palm trees, thick forest, swampy area and mangroves which serve as wood for the smoking of fish and timber for local construction of houses.

3.2.4. Water Resources

Several small streams and rivers some all year round and others dry up in the dry season. Navigable all year round. Huge abode for variety of fishes. Plentiful and can be developed into ports. There are numerous sources of water ranging from creeks, springs, streams and rivers. However a majority of these are seasonal and heavily contaminated.

3.2.5. Flora and Vegetation

3.2.6. Fauna

The lowland forests are home to several types of primates especially the monkeys and also elephants. There are also the bush pigs, porcupine, cutting grass, birds of assorted types including the parrot.

3.2.7. Protected Areas

Protected areas

There are village traditional protected sites for cultural activities. No gazette forests. No parks or reserves.

Sensitive zones

There are several swampy areas found here and there in the human settlement area and the coastal lowland areas.

3.2.8. Mineral Resources

There are huge quantities of sand, but no report of the presence of minerals such as gold, bauxite or iron ore.

3.2.9. Assets, Potentials and Constraints of the Biophysical Milieu

Table 2 :Potentials

POTENTIALS	REMARKS
AGRICULTURE	Large expanses of lands. Forests and fertile soils
COUNCIL/COMMUNITY FORESTS	Lack of Forest management programmes and sustainable natural resource management.
TRANSPORT	Flat land and waterways
COMMERCE	Nearness to Nigerian market, CEMAC, Mundemba and Kumba, Douala
TIMBER EXPLOITATION	Primary forests of various types,
NTFPs	Diverse forests
TOURISM	The sandy islands, creeks and the forest Islands, hills, creeks
INDUSTRIALIZATION	Food, Fish, Timber products
GOVERNANCE	Dynamic and well managed council

3.3. History and People of the council (origin of the people, population, ethnic groups, religions, main economic activities)

3.3.1. History of the Council

ISANGELE council was created by a presidential Decree N°77/203 of 29th June, 1977. ISANGELE is one of the Sub-Divisions that make up Ndian Division. It is situated 56km from Mundemba, the Divisional Headquarters. The council is bounded by the following : North by Mundemba council, South by Kombo Itindi council, West by Mangroves forest and the Atlantic Ocean, East by EkondoTiti and Bamusso council areas. It is characterized by a number of very low-lying coastal ecosystems. It is a sea route to Nigeria. Administratively, ISANGELE is one of the seven sub divisions in the area including ISANGELE, Komboltindi, Idabato, Bamuso, and parts of EkondoTiti. ISANGELE has about 5000 inhabitants and has a surface area of 765 km² and it is 2nd class chiefdom with 1 second class chief at Oron.

ISANGELE is the parent council of the Bakassi peninsular. The other three councils; ISANGELE, Komboltindi and Idabato were offshoots of ISANGELE Council. The council has 22 councilors presently (initially it was 25). One Mayor, 2 deputies.

It has **22** villages namely: Oron, Iso-obo, Amoto, Bateka, Massaka, Atinok, Ekumamiendo, Dibonrikpa, Tinkoro, Okonama, Ofagah, Iyamusong, Corrido I&II, Rio-del-rey Idibanyanga Ekandem, Obotlkot, Efekyayang, EtengAtire, Ankang and Obah-Onond. Four of these villages are on mainland, while the others are maritime. The first phase of the CDP included 10 villages namely: Oron, Bateka, Amoto which constitute the urban space and Idibanyanga I and II on main land. The others are maritime namely: Iso-obo, Mbei, Rio-del-rey, Massaka and mabonda. The second phase from 2015-2017 included 15 villages namely: Oron, Bateka, Amoto, Idibanyanga, Iso-obo, Tinkoro, Atinok, Rio-del-rey, Alabita, Opopo, Ekumamindo, Dibonrikpa, Okunama, Alabita and Mbei with no data as the team was advised by the BIRS not to go there due to insecurity of the area. The rest of the villages will be completed in the third phase from 2018-2020.

3.3.2. The Demography

3.3.2.1. Population Size and Structure

According to the census figures of 2010, the population is as shown in the Table. The local authorities often state the population of ISANGELE to be 5,000 inhabitants. There is concentration of the population in Oron, Bateka, Amoto, Idibanyanga and Iso-obo. Oron is the Paramount Chiefdom. The other recognized chiefdoms are Bateka and Amoto. Many Nigerians live in the municipality especially in the fishing villages where in some cases make up to 100% the population. These populations are not integrated with the indigenous populations. The active farming population is estimated at 9695 [80%] and total surface under cultivation is about 4,000 ha [5.5%].

	GROUP and POSSESSIONS		
Class	YOUTHS	WOMEN	MEN
Rich	Permanent buildings Farms Boats	Permanent buildings Farms Jobs	Permanent buildings Farms Jobs Businesses Married with family Boats
Middle class	Semi-permanent Building Farms Jobs	Permanent buildings Farms Jobs	Permanent buildings Farms Jobs
Poor	Food farms Mud houses	Food farms	Food farms Mud houses

3.3.2.2. Ethnic Groups and Inter-Ethnic Relations

The dominant indigenous populations cohabit with other tribal groupings from Cameroon, Nigeria and other West African countries.

70% ISANGELE indigenes

12% Balondos,

8% Ibibios,

10% other Cameroonians.

3.3.2.3. Religious Congregations

There are several Christian denominational congregations and churches.

1. Apostolic
2. Catholic
3. Full Gospel

3.3.2.4. Population Mobility

To Nigeria

To Mundemba

To ISANGELE, Kombo Itindi, Kumbo Abedimo,

Kumba, Fako, Douala

Yaounde

Social Mobility

The ISANGELE populations are very mobile despite the several transport difficulties by sea and by land. Because of the extensive family lineage between the populations, destinations include other towns in the Bakassi peninsula, towns and villages in Ndian division and the South West Region, Douala and Yaounde and Nigeria.

Nearby	Akwa, Massaka, Mundemba,
Distant	Kumba, Buea, Douala Limbe Yaounde
Foreign	Nigeria

List of main types of professional bodies

1. Bike riders
2. Civil servants
3. Boat pilots

Administration

Modern

ISANGELE is the headquarters of the ISANGELE sub-division where the Divisional Officer resides

Traditional

It is made of three chiefdoms, Oron, Bateka and Amoto.

3.3.3. 1. Vulnerable Groups

14 Persons with physical disabilities

No registered associations

Agriculture is the main activity they carry out.

They cannot do fishing.

They have assistance from time to time from the council.

Categorization of the vulnerable populations

The handicapped, the orphans, the old and mentally ill.

3.3.4. Social Organizations

Traditional and cultural meetings

3 chiefdoms, Oron, Bateka and Amoto. Oron is a 2nd Class chiefdom

3.3.5. Habitat and Environment

There are several mainland communities such as Oron, Bateka, Amoto, Idibanyanga the majority are maritime and islands.

Cosmopolitan ISANGELE is in the mainland with a very rich maritime coast full of creeks, beaches, islands and mangrove forests. The mainland communities are Oron, Bateka, Amoto and Idibanyanga with creeks and islands.

3.3.6. Zoning

ISANGELE urban space is linear and mainly of residential areas in the villages of Oron, Bateka, and Amoto. The administrative block is largely integrated into the residential in Bateka. There is a master plan and an urban housing plan.

3.3.7. Housing system:

The houses are built of local materials. The housing system in Nguti is controlled by the council through its town planning services.

Hygiene And Sanitation:

- 1 municipal toilet in the market
- School toilet
- Grand stand toilet
- Hospital toilet
- Council chambers toilet
- Few household latrines

Land use and Land tenure system

- Customary rights of usage of natural resources especially land and forests. Rights of ownership through land certificates are not a common practice.
- Residential areas
- Farmlands
- Forest exploitation
- Social infrastructures {Roads and streets, electricity}
- Beaches

3.3.8. Local development actors

3.3.8.1. Public services implanted within the council

- The Sub Divisional service
- The District Health Service
- The Sub Divisional Medical Center
- The Gendarmerie
- Security services
- The sub treasury
- Veterinary service
- Basic education

3.3.8.2. Collective Projects

Presence of the National Agricultural Extension and Research Programme [NAERP] and Maize seed sector programme supports.

3.3.8.3. Registered Associations and Civil Society (NGO, Associations, CIG)

Youth Groups,

Women's groups

Include the following

- Bakassi women's forum
- Charity sisters of Bakassi
- Bakassi All Students Association [BASA]
- UMAHISON CIG of Amoto
- ISOROBA of Amoto
- ISUDEF CIG of Oron
- Heads of Services Solidarity Meeting
- Bakassi women for Peace Tasks Force(BAWOPETAF)

3.3.9. Economic Activities

3.3.9.1. Agriculture

Agriculture is the main activity but practiced with the traditional methods. It is replete with problems related to infrastructure, equipment, human and financial difficulties which are responsible for the low production and little potential for growth and employment.

Main problems include

1. Ageing of farmers
2. Difficult access to land
3. Difficult access to inputs [seedlings, pesticides, fungicides and herbicides and grains
4. Difficult access to modern agricultural techniques and tools
5. Difficulty in marketing production, poor farm to market roads
6. Few Cooperatives

Effects include

1. Low production and productivity
2. Low incomes and revenues
3. High cost of foodstuff
4. Unemployment
5. Low migration to ISANGELE
6. Low standards and quality of living

3.3.9.2. Sylviculture

The populations do not practice activities of this very important domain of tree farming.

3.3.9.3. Livestock and Fisheries

Domestic animals like goats, pigs and poultry are common but are mainly for family use. This situation may be explained by the cultural practices and low demand. The sector is characterized by difficult access to basic infrastructure, production and marketing means.

1. Absence of livestock farmers or groups [for pigs, sheep, poultry, goats, cows]
2. Absence of infrastructure to support production
3. Absence of fishing infrastructure [buildings and equipment]
4. Absence of livestock markets
5. No water and electricity to Municipal cold store
6. No organized beach fish market days and butcher's shops,
8. No dynamic business community
9. Lack of credit

3.3.9.4. Hunting

There are no authorized hunters. Traditional hunting is almost absent.

3.3.9.5. Forest Exploitation

There is no official and authorized forest exploiter in ISANGELE. The rate of illegal exploitation of the mangrove forest is alarming. The fishermen use timber for fish drying and building of their huts and houses in the creeks and islands. Timber is illegally exploited and sold inside and especially out of ISANGELE. It is reported that this illegal activity has been the cause of frequent armed aggressions reported in ISANGELE and environs. This activity may persist for long for:

1. Absence of enforcement of law
2. Absence of council and community forests, reserves, sacred forests and sites
3. Absence of Forest Management Units
4. Absence of Forest and Wildlife technical services such as monitoring and control activities

3.3.9.6. NTFPs Harvesting

Illegal and destructive exploitation of the mangrove and forests and NTFPs

3. Insecure ecosystems
4. Loss of employment
5. Absence of wood industry
6. Difficult access to NTFPs

3.3.9.7. Arts and Crafts

The sector services are absent in ISANGELE. There are no established artisans in ISANGELE. This could be explained by the cultural practices.

Absence of craftsmen and entrepreneurs

3.3.9.8. Commerce

This sector is very weak.

- 1) Most of the commercial activities are carried out in Nigeria. Even the newly constructed cold store is not used. .
- 2). Absence of markets of meat and other perishable foodstuff.
- 3) Underdeveloped business sector
- 4). Irregular and costly maritime transportation
- 5) Difficult access to household goods
- 6) Low council revenues
- 7) Low employment

3.3.9.9. Industry

There are no industries. Nonproductive and innovative exploitation of assets and natural resources

3.3.9.10. Services

No financial services like banks.

3.3.9.11. Other Economic Activities: Mangroves, creeks and water ways

The mangrove forest characterizes the vegetation and over 60% of ISANGELE is covered by the mangrove forest which is continually washed by creek waters from the ocean and numerous water sources.

There are also many natural resources of economic importance such as the creek waters which are excellent breeding grounds for fish. The mangrove also provides wood for building and fuel. The water ways are used for transportation. The numerous mangrove forests are good sites for touristic attractions. However because the economy of ISANGELE is rudimentary the numerous creeks and water ways are rather an impediment for easy transport and because of its nearness to Nigeria the mangrove forests and the huge fishing potentials are unsustainably exploited by foreigners to the benefit of Nigeria. There are no touristic, Posts and Tele communication, roads and scientific research and innovation

3.4. Main Potentials and Resources of the Municipality

They are not many but quite significant and include:

Dynamic Population: Very dynamic and youthful population

Water Ways Navigable all year round, several small streams and rivers some all year round and others dry up in the dry season. **BEACHES** Plentiful and can be developed into ports **CREEKS:** Huge abode for variety of fishes

Forest

1. Diverse types and primary, Diverse NTFPs. the Mangrove forest covers about 40% of the municipality
2. The swamp forest found in small areas between the coastal mangroves and the coastal low land forest.
3. The coastal lowland forest. There is increasing illegal exploitation of timber and NTFPs. No formal exploitation have yet been authorized here. No formal exploitation have yet been authorized here.

Fauna: The lowland forests are home to several types of primates especially the monkeys and also elephants. There are also the bush pigs, porcupine, cutting grass, birds of assorted types including the parrot.

Soil: Sandy and clay soils are clay and sandy making them acid soils which are very suitable for farming especially the cultivation of cassava, egusi, maize, cocoa, pineapples', yams currently being practiced. Oil palms and Rubber can also be cultivated here. However there is severe erosion due to the intense rainfall. The roads easily deteriorate with the effect that ISANGELE -Mudemba road is impassible during the rainy season leaving the only option of the irregular, risky and costly maritime transport

Vegetation: hills, steep slopes, deep valleys, low lands, rugged and undulating surfaces. The dominant physical feature of the municipality is virgin forest with large mangroves. Islands (creeks) covering an area of about 765km². the vegetation is mixed with secondary and virgin forest. Vegetation cover of the area is dominated by Palm trees, thick forest, swampy area and mangroves which serve as wood for the smoking of fish and timber for local construction of houses.

Climate: Generally of the equatorial type with two main seasons; a short dry season of about four months [November to February] and a long rainy season [March to October] and is purely a maritime type, wet most of the seasons with an average temperature of 25°C to 35°C. The rainfall is generally heavy and ranges between 7,000 mm and 12,000 mm fairly evenly distributed within 8 months. The relative humidity consequently is very high above 75%. The short dry and long rainy season, high temperatures, high rainfall, high relative humidity suitable for diverse agriculture.

Touristic Sites: Hills, islands, forests and fauna, German relics, ISLANDS: Numerous; SAND DUNES Huge reserves

Sub Soil: Perspectives of petroleum deposits

Fishes: Great variety in enormous quantities huge breeding ground for fish of great variety. The mangrove forests provide excellent breeding grounds for fish.

Biodiversity: Great variety

Geo-Political Position: Frontier market with Nigeria

Infrastructure: Generally lacking and where available it is non-functional.

Education: Nursery schools, Primary schools, Secondary and Vocational

Roads: A total of 22 streets with a distance of 14.31km with the longest being YOMBE STREET- 2km. Bata, EsungaMotonda, stream street, New extension, Dibokato, Iyari, Omeng-Awang, Okamko-Iyari, Awang, AkumAtakpa, Yombe street, G.S.S; Akpe-Effangha-Isoroba, Uka, Manaka, Akpe-Effangha, Uma Isong-Odudu, Isoroba-Uma-Isong, Isoroba, Amoto-Oron, Council street.

POTENTIALS	REMARKS
AGRICULTURE	Large expanses of lands. Forests and fertile soils
COUNCIL/COMMUNITY FORESTS	Forest management programmes and sustainable natural resource management.
TRANSPORT	Flat land and waterways
COMMERCE	Nearness to Nigerian market, CEMAC, Mundemba and Kumba, Douala
TIMBER EXPLOITATION	Primary forests of various types,
NTFPs	Diverse forests
TOURISM	The sandy islands, creeks and the forest Islands, hills, creeks
INDUSTRIALIZATION	Food, Fish, Timber products
GOVERNANCE	Dynamic and well managed council

4. Financial resources

4.1 Elaboration Process and Follow Up of the Budget

The Mayor and the executive orders for budget elaboration to commence but the decision of budget elaboration come from MINATD and usually on October. Also policy demands that a draft copy of the budget be presented to committee members 7 days before the budget session. The council deliberates and approves of the budget and the S.D.O finalizes by appending his signature. Follow up of the budget is usually by the Mayor and Finance Committee.

4.2 Budget Structure for the Last Three Years (2012-2014)

S/N	YEAR	TOTAL REVENUE	TOTAL EXPENDITURE	GRAND TOTAL
1	2012	193.197.081	190.502.210	383.699.291
2	2013	379.964.964	379.964.964	759.929.928
3	2014	855.566.397	855.566.397	1.711.132.794

5. STRATEGIC PLAN

5.1. VISION

A council with very qualified and competent staff and efficient services dedicated to the fight against poverty and human suffering through the creation of wealth, development of the production base and infrastructure, provision of quality social services and promotion of the high values of inclusive good governance and democracy.

5.2. OBJECTIVES

The main objective of the CDP is to ensure that ISANGELE municipality and the local populations are part and parcel of the new Cameroon to emerge by year 2035 and a municipality in which there will be

1. Poverty reduced to acceptable levels i.e. less than 10% due to the creation of jobs and significant increase in its economic activities
2. Provision of social services particularly health, education, electricity, roads and other infrastructure which promote production
3. Dynamic and healthy populations who share and contribute in the efforts and benefits of Cameroon becoming a medium income country
4. An industrial base through the development of its numerous natural resources, assets and potentials particularly fishing and agriculture
5. Joint and concerted efforts to take advantage of its geo-political position to develop international trade in the CEMAC Region and Nigeria.

It is in this light that ISANGELE council will invest its resources in development mainly in the following domains

1. Agriculture and fishing
2. Production infrastructure
3. Social infrastructure
4. Mobilizing financing necessary for its development
5. Developing partnerships and collaboration conventions
6. Environmental protection
7. Sustainable use and management of its natural resources

Therefore ISANGELE Council will resolutely support its populations to be the main actors of their development through the policy of employment creation, raising the quality and standards of life, literacy and prolonging life expectancy by providing and promoting access to quality social services, distributing the fruits of economic growth and further by enhancing national solidarity, empowerment and social protection of the vulnerable populations. Mindful of the challenges of the vision particularly the human, material and financial, social, cultural, environmental, security and political, the ISANGELE council has therefore effectively and fully involved all the stakeholders in the elaboration of this CDP all through its preparation, diagnosis, planning, resource mobilization, programming, implementation and monitoring and evaluation.

5.3 COUNCIL INSTITUTIONAL DIAGNOSIS(CID)

5.3.1

TYPING DATE: 17/03/2015		<u>STATE OF HUMAN RESOURCES</u>		REGION: S.W.R	
				DIVISION: NDIAN	
				COUNCIL: ISANGELE	
				Sub-division: ISANGELE	
S/N	NAME	FUNCTION	QUALIFICATION	LONGIVITY (YEAR)	
1	NDONG MARTIN EKANJE	SECRETARY GENERAL	A-LEVEL & CIRCLE II & III DIPLOMA CEFAM	8	
2	BUKA EMMANUEL NANGANDO	MARKET MASTER	FSLC	13	
3	FELICIA NJWENG NDONG	COUNCIL DEVELOPMENT OFFICER	CAT B1 DIPLOMA IN TOWN PLANNING, HND HR Mgt., CIRCLE III DIPLOMA CEFAM	4	
4	BASSEY EDETSON CHARLES	CIVIL STATUS CLERK	FSLC	12	
5	EVARESTUS DAWOH DAGA	COUNCIL FINANCE OFFICER	B.Sc. (hons.) ACCOUNTING, CIRCLE III DIPLOMA CEFAM	4	
6	IBOK LYDIA	DOMESTIC SERVANT	FSLC	2	
7	OKON HENRY BASSEY	COUNCIL SANITARY AGENT	FSLC	0.5	
8	EKUKA VINCENT EFFAMBA	MUNICIPAL TREASURER	A-LEVEL	19	
9	NTAMARK LAWRENCE AROH	COUNCIL DRIVER	FSLC & ATTESTATION IN MOTOR MECHANIC	10	
FUNCTIONING ORGANIGRAM?		NUMBER OF WORKERS	COUNCIL COMMISSIONS	EXISTENCE	FUNCTIONING
YES <input checked="" type="checkbox"/> NO		09	TENDER BOARD	YES <input checked="" type="checkbox"/> NO	YES <input checked="" type="checkbox"/> NO
			FINANCE	<input checked="" type="checkbox"/> YES NO	<input checked="" type="checkbox"/> YES NO
			SOCIAL	YES <input checked="" type="checkbox"/> NO	YES <input checked="" type="checkbox"/> NO

5.3.2

<u>STATE OF MOVABLE ASSETS OF THE COUNCIL</u>				
Typing Date: 19/03/2015	REGION: S.W.R	COUNCIL: ISANGELE		
	DIVISION: NDIAN	Sub-division: ISANGELE		
TYPE	QUANTITY	DATE OF ACQUISITION	FUNCTIONAL STATE	OBSERVATIONS
4X4 HILUX VEHICLE	01	2001	WORKING	VERY FREQUENT REPAIRS SINCE 2011
YAMAHA SPORT BIKE	01	2014	WORKING	
COCIMENCAM MOTOR BIKES	02	2013	BAD	AWAITING REPAIRS
Hp LAPTOP	01	2013	WORKING	
YAMAHA 75 Hp ENGINE	01		BAD	AWATING AUCTIONING
CORK	01		BAD	AWAITING REPAIRS
MANUAL TYPE WRITER	01		WORKING	NOT BEEN USED
Hp COMPUTER SET	01	2013	WORKING	
Hp COMPUTER SET	01	2014	WORKING	
CANON PRINTER	01	2013	WORKING	
Hp PRINTER	01	2014	WORKING	
VOLTAGE REGULATORS	02	2013, 2014	WORKING	
DISTRIBUTORS	02	2013, 2014	WORKING	
SPEAKERS	02	2013	WORKING	
SPEAKERS STANDS	02	2013	WORKING	
CONSOL (MIXER)	01	2013	WORKING	
UHF MICRO-PHONE RECEIVER	02	2013	WORKING	
UHF MICRO-PHONE RECEIVER STAND	02	2013	WORKING	
FIRE EXTIQUISHERS	04	2013	GOOD	NOT USABLE
WHEEL BARROW	11	2013	GOOD	
WATERING CAN	02	2013	GOOD	
MATABI SPRAYING CAN	01	2013	BAD	AWAITING REPAIRS
F. SPRAYING CAN	01	2013	WORKING	
DIGGERS	02	2013	GOOD	
SPADE	08	2013	GOOD	
RAKE	02			
AXE DIGGERS	04	2013	GOOD	
TABLES	05	2013	GOOD	
PLASTIC CHAIRS	250		GOOD	50 BROKEN
PLANK CHAIRS	05		BAD	TO BE RE-PLACED
VIP CHAIRS	02	2013	GOOD	
CUPBOARD	01	2013	GOOD	
MEASURING TAPE	01	2013	GOOD	
ELEPAQ GASOLINE GENERATOR	01	2013	WORKING	

5.3.3

STATE OF IMMOVABLE ASSETS OF THE COUNCIL			
Typing Date: 19/03/2015		REGION: S.W.R	COUNCIL: ISANGELE
		DIVISION: NDIAN	Sub-division: ISANGELE
TYPE	TYPE	SURFACE(m2)	OBSERVATIONS
OLD COUNCIL CHAMBERS	OLD COUNCIL CHAMBERS	144	NEED RENOVATION
COUNCIL BEACH STORE	COUNCIL BEACH STORE	48	TO REHABILITATE
NEW COUNCIL CHAMBER	NEW COUNCIL CHAMBER	1,498	UNDER CONSRTUCTION
COMMERCIAL RESIDENTIAL BUILDINGS	COMMERCIAL RESIDENTIAL BUILDINGS	216	LOCATED IN ISANGELE UNDER USE
COMMERCIAL RESIDENTIAL BUILDINGS	COMMERCIAL RESIDENTIAL BUILDINGS	27	MASSAKA UNOCCUPIED
COMMERCIAL RESIDENTIAL BUILDINGS	COMMERCIAL RESIDENTIAL BUILDINGS	108	IDIBANYANGA UNDER CONSTRUCTION
FISH MARKET AT ORON	FISH MARKET AT ORON	108	
MARKET	MARKET	2,400	
COLD STORE	COLD STORE	54	NON FUNCTIONAL

5.3.4

<u>COUNCIL RELATIONSHIP WITH OTHER ACTORS</u>			
<u>Typing Date:</u>18/03/2015		<u>REGION:</u>S.W.R	<u>COUNCIL:</u>ISANGELE
		<u>DIVISION:</u>NDIAN	<u>Sub-division:</u> ISANGELE
<u>RELATIONSHIP WITH OTHER ACTORS</u>			
<u>ACTORS</u>	<u>I=INTERNAL</u> <u>E=EXTERNAL</u>	<u>RELATIONSHIP</u> <u>G=GOOD</u> <u>F=FAIR</u> <u>B=BAD</u>	<u>OBSERVATION</u>
FEICOM	E	G	SUBVENTIONS
PNDP	E	G	SUBVENTIONS
RUMPI	E	G	SUBVENTIONS
SOWEDA	E	G	SUBVENTIONS
PAMOL	E	G	SUBVENTIONS
UNESCO	E	G	SUBVENTIONS
MINDUH	I	G	TECHNICAL PARTNER
MINFOF	I	G	TECHNICAL PARTNER
MINADER	I	G	TECHNICAL PARTNER
MINPROFF	I	G	TECHNICAL PARTNER
MINSANTE	I	G	TECHNICAL PARTNER
MINEDUB	I	G	TECHNICAL PARTNER
MINSEC	I	G	TECHNICAL PARTNER
DIVISIONAL OFFICE	I	G	ADMINISTRATION & TECHNICAL PARTNER
MINEPIA	I	G	TECHNICAL PARTNER
MINJEC	I	G	TECHNICAL PARTNER
FORCES OF LAW & ORDER	I	G	SECURITY
MINAS	I	G	TECHNICAL PARTNER
TRADITIONAL AUTHORITIES	I	G	TECHNICAL PARTNER
RELIGIOUS AUTHORITIES	I	G	SPIRITUAL PARTNERS
CIVIL SOCIETY	E	G	TECHNICAL PARTNER
PDICA	E	G	CONVENTION

5.4 Village Diagnosis (VD)

5.4.1

STATE OF VILLAGE ORON									
Typing date: 19/03/2015		REGION: SWR			COUNCIL: ISANGELE				
VILLAGE: ORON		DIVISION: NDIAN			SUBDIVISION: ISANGELE				
GEOGRAPHICAL COORDINATES									
X: 008.6811									
Y: 04.7752									
Z: 13m									
MEN:	3310	VULNERABLE PERSONS				PRIORITY SOCIAL PROJECTS		ESTIMATED COST (FCFA)	
WOMEN:	3711	DISABLED:	Y	PYGMIS:	N	1	ELECTRICITY(THERMAL PLANT)	500.000.000	
CHILDREN :	3010	STREET CHILDREN:	Y	MBOROROS:	N	2	CONSTRUCTION OF EMBARKMENT	275.000.000	
POP. SIZE:	10,031	ORPHANS:	Y			3	WATER CATCHMENT	260.000.000	
		AGED:	Y						
INFRASTRUCTURES				PRINCIPAL AVAILABLE RESOURCES		4	CONSTRUCTION OF A MODERN FISH OVEN	2.500.000	
NO. HIGH SCHOOLS:	0	NO. MARKET	0	NO. FOREST	1	PRIORITY ECONOMIC PROJECTS		ESTIMATED COST	
NO. COLLEGES:	0	NO. TERMINAL	0	NO. LAKE	0	1	NIL	00	
NO. PRIMARY SCHOOL:	0	NO. SLUTERHOUSE	0	NO. PROTECTED PARKS	2	2	NIL	00	
NO. NURSERY SCHOOL:	0	NO. TREE NURSERY	0	NO. TOURISTIC SITE	0	3	NIL	00	
NO. HOSPITAL:	0	EXISTENCE OF ELECTRICITY	NO. QUARIES	0	TOTAL OF PRIORITY PROJECTS				TOTAL ESTIMATED COSTS
NO. HEALTH CENTRE:	0	✓ N: Y:	OTHER RESOURCES (SAND, MANGROVE, CREEKS,)	3	04				1.037.500.000
NO. DRILLED WELL:	0	EXISTENCE OF COM. NETWORK	ACCESS INTO VILLAGE		N-NO Y-YES AS-ACCESSIBLE				
NO. WELL:	0	✓ YN	TARRED ROAD:	N					
NO. PUBLIC TAP:	02	EXISTENCE OF DEV'T COMMITTEE	EARTH ROAD:	Y					
NO. PSYCHOSOCIAL CENTRE:	0	✓ Y: N:	FOOTPATH:	N					
NO. WAREHOUSE:	0		WATER:	Y					
NO. SPRINGS:	0		STATE OF ROAD:	AS					
BAINS DETIQUEURS:	N		ORGANISATION OF VILLAGE						
LIVESTOCK RESERVES:	0		CHIEFDOM	II					
			NO. NEIGHBOURHOODS	05					

5.4.2

STATE OF VILLAGE BATEKA									
Typing date: 19/03/2015		REGION: SWR				COUNCIL: ISANGELE			
VILLAGE: BATEKA		DIVISION: NDIAN				SUBDIVISION: ISANGELE			
<u>GEOGRAPHICAL COORDINATES</u>									
X: 008.6999									
Y: 04.7785									
Z: 35m									
MEN:	2770	<u>VULNERABLE PERSONS</u>					<u>PRIORITY SOCIAL PROJECTS</u>	<u>ESTIMATED COST (FCFA)</u>	
WOMEN:	3198	DISABLED:	Y	PYGMIS:	N	1	ELECTRICITY(THERMAL PLANT)	500.000.000	
CHILDREN:	2665	STREET CHILDREN:	Y	MBOROROS:	N	2	WATER CATCHMENT	260.000.000	
POP. SIZE:	8633	ORPHANS:	Y			3	CONSTRUCTION OF A MODERN FISH OVEN	2.500.000	
		AGED:	Y						
<u>INFRASTRUCTURES</u>					<u>PRINCIPAL AVAILABLE RESOURCES</u>				
NO. HIGH SCHOOLS:	1	NO. MARKET	1	NO. FOREST	1	<u>PRIORITY ECONOMIC PROJECTS</u>		<u>ESTIMATED COST</u>	
NO. COLLEGES:	1	NO. TERMINAL	0	NO. LAKE	0	1	NIL	00	
NO. PRIMARY SCHOOL:	1	NO. SLUTERHOUSE	0	NO. PROTECTED PARKS	1	2	NIL	00	
NO. NURSERY SCHOOL:	1	NO. TREE NURSERY	0	NO. TOURISTIC SITE	0	3	NIL	00	
NO. HOSPITAL:	0	<u>EXISTENCE OF ELECTRICITY</u>		NO. QUARIES	0	<u>TOTAL OF PRIORITY PROJECTS</u>		<u>TOTAL ESTIMATED COSTS</u>	
NO. HEALTH CENTRE:	1	✓ N: Y:		OTHER RESOURCES (SAND, MANGROVE, CREEKS, FOREST)	4	03		762.500.000	
NO. DRILLED WELL:	3	<u>EXISTENCE OF COM. NETWORK</u>				<u>ACCESS INTO VILLAGE</u>			
NO. WELL:	1	✓ Y: N:				TARRED ROAD:	N	N-NO Y-YES AS-ACCESSIBLE	
NO. PUBLIC TAP:	11	<u>EXISTENCE OF DEV'T COMMITTEE</u>				EARTH ROAD:	Y		
NO. PSYCHOSOCIAL CENTRE:	0	✓ Y: N:				FOOTPATH:	N		
NO. WAREHOUSE:	0					WATER:	Y		
NO. SPRINGS:	0					STATE OF ROAD:	AS		
BAINS DETIQUEURS:	N								
LIVESTOCK RESERVES:	0								
					<u>ORGANISATION OF VILLAGE</u>				
					CHIEFDOM		III		
					NO. NEIGHBOURHOODS		04		

5.4.3

STATE OF VILLAGE AMOTO									
Typing date: 19/03/2015				REGION: SWR			COUNCIL: ISANGELE		
VILLAGE: AMOTO				DIVISION: NDIAN			SUBDIVISION: ISANGELE		
GEOGRAPHICAL COORDINATES									
X: 008.6768									
Y: 04.7751									
Z: 12m									
MEN:	1821	VULNERABLE PERSONS				PRIORITY SOCIAL PROJECTS		ESTIMATED COST (ECFA)	
WOMEN:	2200	DISABLED:	Y	NO. FOREST	1	1	ELECTRICITY(THERMAL PLANT)	500.000.000	
CHILDREN:	2071	STREET CHILDREN:	Y	NO. LAKE	0	2	CONSTRUCTION OF FISH POND	160.000.000	
POP. SIZE:	6092	ORPHANS:	Y	NO. PROTECTED PARKS	2	3	WATER CATCHMENT	260.000.000	
				NO. QUQRIES	0				
		AGED:	Y	NO. TOURISTIC SITE	0	4	CONSTRUCTION OF A MODERN FISH OVEN	2.500.000	
INFRASTRUCTURES				PRINCIPAL AVAILABLE RESOURCES		PRIORITY ECONOMIC PROJECTS		ESTIMATED COST	
NO. HIGH SCHOOLS:	0	NO. MARKET	0	NO. FOREST	3	1	NIL	00	
NO. COLLEGES:	0	NO. TERMINAL	0	NO. LAKE	0	2	NIL	00	
NO. PRIMARY SCHOOL:	0	NO. SLUTERHOUSE	0	NO. PROTECTED PARKS	2	3	NIL	00	
NO. NURSERY SCHOOL:	0	NO. TREE NURSERY	0	NO. TOURISTIC SITE	0	TOTAL OF PRIORITY PROJECTS		TOTAL ESTIMATED COSTS	
NO. HOSPITAL:	0	EXISTENCE OF ELECTRICITY		ACCESS INTO VILLAGE		04		922.500.000	
NO. HEALTH CENTRE:	0	✓ N: Y:		TARRED ROAD:		N		N-NO Y-YES AS-ACCESSIBLE	
NO. DRILLED WELL:	0	EXISTENCE OF COM. NETWORK		EARTH ROAD:		Y			
NO. WELL:	0	✓ Y: N:		FOOTPATH:		N			
NO. PUBLIC TAP:	03	EXISTENCE OF DEV'T COMMITTEE		WATER:		Y			
NO. PSYCHOSOCIAL CENTRE:	1	✓ Y: N:		STATE OF ROAD:		AS			
NO. WAREHOUSE:	0			ORGANISATION OF VILLAGE					
NO. SPRINGS:	0			CHIEFDOM		III			
BAINS DETIQUEURS:	N			NO. NEIGHBOURSHOODS		04			
LIVESTOCK RESERVES:	0								

5.4.4

STATE OF VILLAGE IDIBANYANGA									
Typing date: 19/03/2015				REGION: SWR		COUNCIL: ISANGELE			
VILLAGE: IDIBANYANGA				DIVISION: NDIAN		SUBDIVISION: ISANGELE			
GEOGRAPHICAL COORDINATES									
X: 008.7004									
Y: 04.8534									
Z: 32m									
MEN:	1551	VULNERABLE PERSONS				PRIORITY SOCIAL PROJECTS		ESTIMATED COST (FCFA)	
WOMEN:	1449	DISABLED:	Y	PYGMIS:	N	1	WATER (BOREHOLE)	15.000.000	
CHILDREN:	1522	STREET CHILDREN:	N	MBOROROS:	N	2	HEALTH POST	60.000.000	
POP. SIZE:	4522	ORPHANS:	Y			3	ELECTRICITY (THERMAL)	500.000.000	
		AGED:	Y			4	NIL	00	
INFRASTRUCTURES				PRINCIPAL AVAILABLE RESOURCES		5	NIL	00	
NO. HIGH SCHOOLS:	0	NO. MARKET	0	NO. FOREST	1	PRIORITY ECONOMIC PROJECTS		ESTIMATED COST	
NO. COLLEGES:	0	NO. TERMINAL	0	NO. LAKE	0	1	NIL	00	
NO. PRIMARY SCHOOL:	1	NO. SLUTERHOUSE	0	NO. PROTECTED PARKS	2	2	NIL	00	
NO. NURSERY SCHOOL:	0	NO. TREE NURSERY	0	NO. TOURISTIC SITE	0	3	NIL	00	
NO. HOSPITAL:	0	EXISTENCE OF ELECTRICITY		NO. QUARIES	0	TOTAL OF PRIORITY PROJECTS		TOTAL ESTIMATED COSTS	
NO. HEALTH CENTRE:	0	✓ N: Y:		OTHER RESOURCES (SAND, MANGROVE, CREEKS,)	3	03		575.000.000	
NO. DRILLED WELL:	0	EXISTENCE OF COM. NETWORK		ACCESS INTO VILLAGE		N-NO Y-YES AS-ACCESSIBLE			
NO. WELL:	0	✓ N: Y:		TARRED ROAD:	N				
NO. PUBLIC TAP:	0	EXISTENCE OF DEV'T COMMITTEE		EARTH ROAD:	Y				
NO. PSYCHOSOCIAL CENTRE:	0	✓ Y: N:		FOOTPATH:	N				
NO. WAREHOUSE:	0			WATER:	Y				
NO. SPRINGS:	0			STATE OF ROAD:	AS				
BAINS DETIQUEURS:	N			ORGANISATION OF VILLAGE					
LIVESTOCK RESERVES:	0			CHIEFDOM	III				
				NO. NEIGHBOURSHO ODS	05				

5.4.5

STATE OF VILLAGE MASSAKA

Typing date: 19/03/2015		REGION: SWR		COUNCIL: ISANGELE				
VILLAGE: MASSAKA		DIVISION: NDIAN		SUBDIVISION: ISANGELE				
GEOGRAPHICAL COORDINATES								
X: 008.7518								
Y: 04.8408								
Z: 7m								
MEN:	491	VULNERABLE PERSONS				PRIORITY SOCIAL PROJECTS	ESTIMATED COST (FCFA)	
WOMEN:	516	DISABLED:	N	PYGMIS:	N	1	WATER (BOREHOLE)	15.000.000
CHILDREN:	335	STREET CHILDREN:	N	MBOROROS:	N	2	HEALTH POST	60.000.000
POP. SIZE:	1342	ORPHANS:	Y			3	ELECTRICITY (SOLAR)	20.000.000
		AGED:	Y					
INFRASTRUCTURES				PRINCIPAL AVAILABLE RESOURCES		PRIORITY ECONOMIC PROJECTS		ESTIMATED COST
NO. HIGH SCHOOLS:	0	NO. MARKET	0	NO. FOREST	1	1	NIL	00
NO. COLLEGES:	0	NO. TERMINAL	0	NO. LAKE	0	2	NIL	00
NO. PRIMARY SCHOOL:	1	NO. SLUTERHOUSE	0	NO. PROTECTED PARKS (SECRET FOREST)	1	3	NIL	00
NO. NURSERY SCHOOL:	0	NO. TREE NURSERY	0	NO. TOURISTIC SITE	0	TOTAL OF PRIORITY PROJECTS		TOTAL ESTIMATED COSTS
NO. HOSPITAL:	0	EXISTENCE OF ELECTRICITY		NO. QUARIES	0	04		208.000.000
NO. HEALTH CENTRE:	0	✓ N: Y:		OTHER RESOURCES (SAND, MANGROVE, CREEKS)	3	N-NO Y-YES AS-ACCESSIBLE		
NO. DRILLED WELL:	0	EXISTENCE OF COM. NETWORK		ACCESS INTO VILLAGE				
NO. WELL:	1	✓ N: Y:		TARRED ROAD:	N			
NO. PUBLIC TAP:	0	EXISTENCE OF DEV'T COMMITTEE		EARTH ROAD:	N			
NO. PSYCHOSOCIAL CENTRE:	0	✓ Y: N:		FOOTPATH:	Y			
NO. WAREHOUSE:	0			WATER:	Y	N-NO Y-YES AS-ACCESSIBLE		
NO. SPRINGS:	0			STATE OF ROAD:	AS			
BAINS DETIQUEURS:	N			ORGANISATION OF VILLAGE				
LIVESTOCK RESERVES:	0			CHIEFDOM	III			
				NO. NEIGHBOURSHOODS	06			

5.4.6

STATE OF VILLAGE OKONAMA									
Typing date: 19/03/2015		REGION: SWR				COUNCIL: ISANGELE			
VILLAGE: OKONAMA		DIVISION: NDIAN				SUBDIVISION: ISANGELE			
GEOGRAPHICAL COORDINATES									
X: 008.7119									
Y: 04.8073									
Z: 8m									
MEN:	152	VULNERABLE PERSONS				PRIORITY SOCIAL PROJECTS		ESTIMATED COST (FCFA)	
WOMEN:	215	DISABLED:	N	PYGMIS:	N	1	WATER (BOREHOLE)	15.000.000	
CHILDREN:	170	STREET CHILDREN:	N	MBOROROS:	N	2	SCHOOL	23.000.000	
POP. SIZE:	537	ORPHANS:	Y			3	HEALTH POST	60.000.000	
		AGED:	Y			4	ELECTRCITY (SOLAR)	20.000.000	
INFRASTRUCTURES				PRINCIPAL AVAILABLE RESOURCES		5	CONSTRUCTION OF A MODERN FISH OVEN	2.500.000	
NO. HIGH SCHOOLS:	0	NO. MARKET	0	NO. FOREST	1	PRIORITY ECONOMIC PROJECTS		ESTIMATED COST	
NO. COLLEGES:	0	NO. TERMINAL	0	NO. LAKE	0	1	NIL	00	
NO. PRIMARY SCHOOL:	0	NO. SLUTERHOUSE	0	NO. PROTECTED PARKS	0	2	NIL	00	
NO. NURSERY SCHOOL:	0	NO. TREE NURSERY	0	NO. TOURISTIC SITE	0	3	NIL	00	
NO. HOSPITAL:	0	EXISTENCE OF ELECTRICITY		NO. QUARIES	0	TOTAL OF PRIORITY PROJECTS		TOTAL ESTIMATED COSTS	
NO. HEALTH CENTRE:	0	✓ N: Y:		OTHER RESOURCES (SAND, MANGROVE, CREEKS)	3	05		120.500.000	
NO. DRILLED WELL:	0	EXISTENCE OF COM. NETWORK		ACCESS INTO VILLAGE		N-NO Y-YES AS-ACCESSIBLE			
NO. WELL:	1	✓ N Y		TARRED ROAD:	N				
NO. PUBLIC TAP:	0	EXISTENCE OF DEV'T COMMITTEE		EARTH ROAD:	N				
NO. PSYCHOSOCIAL CENTRE:	0	✓ N: Y:		FOOTPATH:	Y				
NO. WAREHOUSE:	0			WATER:	Y				
NO. SPRINGS:	0			STATE OF ROAD:	AS				
BAINS DETIQUEURS:	N			ORGANISATION OF VILLAGE					
LIVESTOCK RESERVES:	0			CHIEFDOM	III				
				NO. NEIGHBOURSHOODS	04				

5.4.7

STATE OF VILLAGE DIBONDORIKPA									
Typing date: 19/03/2015			REGION: SWR			COUNCIL: ISANGELE			
VILLAGE: DIBONDORIKPA			DIVISION: NDIAN			SUBDIVISION: ISANGELE			
GEOGRAPHICAL COORDINATES									
X: 008.7196									
Y: 04.7669									
Z: 13m									
MEN:	285	VULNERABLE PERSONS				PRIORITY SOCIAL PROJECTS		ESTIMATED COST (FCFA)	
WOMEN:	192	DISABLED:	N	PYGMIS:	N	1	WATER (BOREHOLE)	15.000.000	
CHILDREN:	189	STREET CHILDREN:	N	MBOROROS:	N	2	SCHOOL	23.000.000	
POP. SIZE:	666	ORPHANS:	Y			3	HEALTH POST	60.000.000	
		AGED:	Y			4	ELECTRICITY (SOLAR)	20.000.000	
INFRASTRUCTURES				PRINCIPAL AVAILABLE RESOURCES		5	CONSTRUCTION OF A MODERN FISH OVEN	2.500.000	
NO. HIGH SCHOOLS:	0	NO. MARKET	0	NO. FOREST	0	PRIORITY ECONOMIC PROJECTS		ESTIMATED COST	
NO. COLLEGES:	0	NO. TERMINAL	0	NO. LAKE	0	1	NIL	00	
NO. PRIMARY SCHOOL:	0	NO. SLUTERHOUSE	0	NO. PROTECTED PARKS	0	2	NIL	00	
NO. NURSERY SCHOOL:	0	NO. TREE NURSERY	0	NO. TOURISTIC SITE	0	3	NIL	00	
NO. HOSPITAL:	0	EXISTENCE OF ELECTRICITY		NO. QUARIES	0	TOTAL OF PRIORITY PROJECTS		TOTAL ESTIMATED COSTS	
NO. HEALTH CENTRE:	0	✓ N: Y:		OTHER RESOURCES (SAND, MANGROVE, CREEKS)	3	C05		120.500.000	
NO. DRILLED WELL:	0	EXISTENCE OF COM. NETWORK		ACCESS INTO VILLAGE					
NO. WELL:	0	✓ N: Y		TARRED ROAD:	N				
NO. PUBLIC TAP:	0	EXISTENCE OF DEV'T COMMITTEE		EARTH ROAD:	N				
NO. PSYCHOSOCIAL CENTRE:	0	✓ N: Y:		FOOTPATH:	N				
NO. WAREHOUSE:	0			WATER:	Y				
NO. SPRINGS:	0			STATE OF ROAD:	AS				
BAINS DETIQUEURS:	N			ORGANISATION OF VILLAGE					
LIVESTOCK RESERVES:	0			CHIEFDOM	III				
				NO. NEIGHBOURSHOODS	06				

STATE OF VILLAGE EKUMAMINDO									
Typing date: 19/03/2015			REGION: SWR			COUNCIL: ISANGELE			
VILLAGE: EKUMAMINDO			DIVISION: NDIAN			SUBDIVISION: ISANGELE			
GEOGRAPHICAL COORDINATES									
X: 008.7183									
Y: 04.7374									
Z: 4m									
MEN:	151	VULNERABLE PERSONS				PRIORITY SOCIAL PROJECTS		ESTIMATED COST (FCFA)	
WOMEN:	194	DISABLED:	N	PYGMIS:	N	1	WATER (BOREHOLE)	15.000.000	
CHILDREN:	136	STREET CHILDREN:	N	MBOROR OS:	N	2	SCHOOL	23.000.000	
POP. SIZE:	481	ORPHANS:	Y			3	HEALTH POST	60.000.000	
		AGED:	Y			4	ELECTRCITY (SOLAR)	20.000.000	
INFRASTRUCTURES				PRINCIPAL AVAILABLE RESOURCES		5	NIL	00	
NO. HIGH SCHOOLS:	0	NO. MARKET	0	NO. FOREST	0	PRIORITY ECONOMIC PROJECTS		ESTIMATED COST	
NO. COLLEGES:	0	NO. TERMINAL	0	NO. LAKE	0	1	NIL	00	
NO. PRIMARY SCHOOL:	0	NO. SLUTERHOUSE	0	NO. PROTECTED PARKS	0	2	NIL	00	
NO. NURSERY SCHOOL:	0	NO. TREE NURSERY	0	NO. TOURISTIC SITE	0	3	NIL	00	
NO. HOSPITAL:	0	EXISTENCE OF ELECTRICITY		NO. QUARIES	0	TOTAL OF PRIORITY PROJECTS		TOTAL ESTIMATED COSTS	
NO. HEALTH CENTRE:	0	✓ N: Y:		OTHER RESOURCES (SAND, MANGROVE, CREEKS)	3	04		118.000.000	
NO. DRILLED WELL:	0	EXISTENCE OF COM. NETWORK		ACCESS INTO VILLAGE					
NO. WELL:	0	✓ N: Y:		TARRED ROAD:	N				
NO. PUBLIC TAP:	0	EXISTENCE OF DEV'T COMMITTEE		EARTH ROAD:	N				
NO. PSYCHOSOCIAL CENTRE:	0	✓ N: Y:		FOOTPATH:	N				
NO. WAREHOUSE:	0			WATER:	Y				
NO. SPRINGS:	0			STATE OF ROAD:	AS				
BAINS DETIQUEURS:	N		ORGANISATION OF VILLAGE						
LIVESTOCK RESERVES:	0		CHIEFDOM		III				
			NO. NEIGHBOURHOODS		04				

STATE OF VILLAGE TINKORO									
<u>Typing date:</u> 19/03/2015			<u>REGION:</u> SWR			<u>COUNCIL:</u> ISANGELE			
<u>VILLAGE:</u> TINKORO			<u>DIVISION:</u> NDIAN			<u>SUBDIVISION:</u> ISANGELE			
<u>GEOGRAPHICAL COORDINATES</u>									
X: 008.7026									
Y: 04.7008									
Z: 6m									
<u>MEN:</u>	161	<u>VULNERABLE PERSONS</u>				<u>PRIORITY SOCIAL PROJECTS</u>		<u>ESTIMATED COST (FCFA)</u>	
<u>WOMEN:</u>	75	<u>DISABLED:</u>	N	<u>PYGMIS:</u>	N	1	WATER (BOREHOLE)	15.000.000	
<u>CHILDREN:</u>	150	<u>STREET CHILDREN:</u>	N	<u>MBOROROS:</u>	N	2	SCHOOL	23.000.000	
<u>POP. SIZE:</u>	386	<u>ORPHANS:</u>	Y			3	HEALTH POST	60.000.000	
		<u>AGED:</u>	Y			4	ELECTRCITY (SOLAR)	20.000.000	
<u>INFRASTRUCTURES</u>				<u>PRINCIPAL AVAILABLE RESOURCES</u>		5	NIL	00	
<u>NO. HIGH SCHOOLS:</u>	0	<u>NO. MARKET</u>	0	<u>NO. FOREST</u>	0	<u>PRIORITY ECONOMIC PROJECTS</u>		<u>ESTIMATED COST</u>	
<u>NO. COLLEGES:</u>	0	<u>NO. TERMINAL</u>	0	<u>NO. LAKE</u>	0	1	NIL	00	
<u>NO. PRIMARY SCHOOL:</u>	0	<u>NO. SLUTERHOUSE</u>	0	<u>NO. PROTECTED PARKS</u>	0	2	NIL	00	
<u>NO. NURSERY SCHOOL:</u>	0	<u>NO. TREE NURSERY</u>	0	<u>NO. TOURISTIC SITE</u>	0	3	NIL	00	
<u>NO. HOSPITAL:</u>	0	<u>EXISTENCE OF ELECTRICITY</u>		<u>NO. QUARIES</u>	0	<u>TOTAL OF PRIORITY PROJECTS</u>		<u>TOTAL ESTIMATED COSTS</u>	
<u>NO. HEALTH CENTRE:</u>	0	✓ N: Y:		<u>OTHER RESOURCES (SAND, MANGROVE, CREEKS)</u>	3	04		118.000.000	
<u>NO. DRILLED WELL:</u>	0	<u>EXISTENCE OF COM. NETWORK</u>		<u>ACCESS INTO VILLAGE</u>					
<u>NO. WELL:</u>	0	✓ N: Y		<u>TARRED ROAD:</u>	N				
<u>NO. PUBLIC TAP:</u>	0	<u>EXISTENCE OF DEV'T COMMITTEE</u>		<u>EARTH ROAD:</u>	N				
<u>NO. PSYCHOSOCIAL CENTRE:</u>	0	✓ N: Y:		<u>FOOTPATH:</u>	N				
<u>NO. WAREHOUSE:</u>	0			<u>WATER:</u>	Y				
<u>NO. SPRINGS:</u>	0			<u>STATE OF ROAD:</u>	AS				
<u>BAINS DETIQUEURS:</u>	N			<u>ORGANISATION OF VILLAGE</u>					
<u>LIVESTOCK RESERVES:</u>	0			<u>CHIEFDOM</u>	III				
				<u>NO. NEIGHBOURSHOODS</u>	03				

STATE OF VILLAGE RIO-DEL-REY									
Typing date: 19/03/2015			REGION: SWR			COUNCIL: ISANGELE			
VILLAGE: RIO-DEL-REY			DIVISION: NDIAN			SUBDIVISION: ISANGELE			
GEOGRAPHICAL COORDINATES									
X: 008.6353									
Y: 04.7090									
Z: 2m									
<u>MEN:</u>	251	<u>VULNERABLE PERSONS</u>				<u>PRIORITY SOCIAL PROJECTS</u>		<u>ESTIMATED COST (FCFA)</u>	
<u>WOMEN:</u>	196	DISABLED:	N	PYGMIS:	N	1	WATER (BOREHOLE)	15.000.000	
<u>CHILDREN:</u>	208	STREET CHILDREN:	N	MBOROROS:	N	2	SCHOOL	23.000.000	
<u>POP. SIZE:</u>	655	ORPHANS:	Y			3	HEALTH POST	60.000.000	
		AGED:	Y			4	ELECTRCITY (SOLAR)	20.000.000	
<u>INFRASTRUCTURES</u>				<u>PRINCIPAL AVAILABLE RESOURCES</u>		5	NIL	00	
NO. HIGH SCHOOLS:	0	NO. MARKET	0	NO. FOREST	0	<u>PRIORITY ECONOMIC PROJECTS</u>		<u>ESTIMATED COST</u>	
NO. COLLEGES:	0	NO. TERMINAL	0	NO. LAKE	0	1	NIL	00	
NO. PRIMARY SCHOOL:	0	NO. SLUTERHOUS E	0	NO. PROTECTED PARKS	0	2	NIL	00	
NO. NURSERY SCHOOL:	0	NO. TREE NURSERY	0	NO. TOURISTIC SITE	0	3	NIL	00	
NO. HOSPITAL:	0	<u>EXISTENCE OF ELECTRICITY</u>		NO. QUARIES	0	<u>TOTAL OF PRIORITY PROJECTS</u>		<u>TOTAL ESTIMATED COSTS</u>	
NO. HEALTH CENTRE:	0	✓ N: Y:		OTHER RESOURCES (SAND, MANGROVE, CREEKS)	3	04		118.000.000	
NO. DRILLED WELL:	0	<u>EXISTENCE OF COM. NETWORK</u>		<u>ACCESS INTO VILLAGE</u>					
NO. WELL:	0	✓ Y: N:		TARRED ROAD:	N				
NO. PUBLIC TAP:	0	<u>EXISTENCE OF DEV'T COMMITTEE</u>		EARTH ROAD:	N				
NO. PSYCHOSOCIAL CENTRE:	0	✓ N: Y:		FOOTPATH:	N				
NO. WAREHOUSE:	0			WATER:	Y				
NO. SPRINGS:	0			STATE OF ROAD:	AS				
BAINS DETIQUEURS:	N			<u>ORGANISATION OF VILLAGE</u>					
LIVESTOCK RESERVES:	0			CHIEFDOM	III				
				NO. NEIGHBOURSHOODS	05				

STATE OF VILLAGE ALABITA									
Typing date: 19/03/2015		REGION: SWR				COUNCIL: ISANGELE			
VILLAGE: ALABITA		DIVISION: NDIAN				SUBDIVISION: ISANGELE			
GEOGRAPHICAL COORDINATES									
X: 008.7002									
Y: 04.7143									
Z: 7m									
MEN:	99	VULNERABLE PERSONS				PRIORITY SOCIAL PROJECTS		ESTIMATED COST (FCFA)	
WOMEN:	84	DISABLED:	N	PYGMIS:	N	1	WATER (BOREHOLE)	15.000.000	
CHILDREN:	103	STREET CHILDREN:	N	MBOROROS:	N	2	SCHOOL	23.000.000	
POP. SIZE:	286	ORPHANS:	Y			3	HEALTH POST	60.000.000	
		AGED:	Y			4	ELECTRICITY (SOLAR)	20.000.000	
						PRIORITY ECONOMIC PROJECTS		ESTIMATED COST	
INFRASTRUCTURES				PRINCIPAL AVAILABLE RESOURCES		1	NIL	00	
NO. HIGH SCHOOLS:	0	NO. MARKET	0	NO. FOREST	0	2	NIL	00	
NO. COLLEGES:	0	NO. TERMINAL	0	NO. LAKE	0	3	NIL	00	
NO. PRIMARY SCHOOL:	0	NO. SLUTERHOUSE	0	NO. PROTECTED PARKS	0	TOTAL OF PRIORITY PROJECTS		TOTAL ESTIMATED COSTS	
NO. NURSERY SCHOOL:	0	NO. TREE NURSERY	0	NO. TOURISTIC SITE	0	04		118.000.000	
NO. HOSPITAL:	0	EXISTENCE OF ELECTRICITY		NO. QUARIES	0				
NO. HEALTH CENTRE:	0	✓ N: Y:		OTHER RESOURCES (SAND, MANGROVE, CREEKS)	3				
NO. DRILLED WELL:	0	EXISTENCE OF COM. NETWORK		ACCESS INTO VILLAGE					
NO. WELL:	0	✓ N: Y:		TARRED ROAD:	N				
NO. PUBLIC TAP:	0	EXISTENCE OF DEV'T COMMITTEE		EARTH ROAD:	N				
NO. PSYCHOSOCIAL CENTRE:	0	✓ N: Y:		FOOTPATH:	N				
NO. WAREHOUSE:	0			WATER:	Y				
NO. SPRINGS:	0			STATE OF ROAD:	AS				
BAINS DETIQUEURS:	N			ORGANISATION OF VILLAGE					
LIVESTOCK RESERVES:	0			CHIEFDOM	III				
				NO. NEIGHBOURSHOODS	04				

STATE OF VILLAGE ATINOK									
Typing date: 19/03/2015			Typing date: 19/03/2015			COUNCIL: ISANGELE			
VILLAGE: ATINOK			VILLAGE: ATINOK			SUBDIVISION: ISANGELE			
GEOGRAPHICAL COORDINATES									
X:008.6328									
Y:04.6887									
Z:4m									
<u>MEN:</u>	121	VULNERABLE PERSONS				PRIORITY SOCIAL PROJECTS		ESTIMATED COST (FCFA)	
<u>WOMEN:</u>	221	DISABLED:	Y	PYGMIS:	N	1	WATER (BOREHOLE)	15.000.000	
<u>CHILDREN :</u>	253	STREET CHILDREN:	N	MBOROROS:	N	2	HEALTH POST	60.000.000	
<u>POP. SIZE:</u>	595	ORPHANS:	Y			3	SCHOOL	23.000.000	
		AGED:	Y			4	ELECTRICITY (SOLAR)	20.000.000	
INFRASTRUCTURES				PRINCIPAL AVAILABLE RESOURCES					
NO. HIGH SCHOOLS:	0	NO. MARKET	0	NO. FOREST	0	PRIORITY ECONOMIC PROJECTS		ESTIMATED COST	
NO. COLLEGES:	0	NO. TERMINAL	0	NO. LAKE	0	1	NIL	00	
NO. PRIMARY SCHOOL:	0	NO. SLUTERHOUSE	0	NO. PROTECTED PARKS	0	2	NIL	00	
NO. NURSERY SCHOOL:	0	NO. TREE NURSERY	0	NO. TOURISTIC SITE	0	3	NIL	00	
NO. HOSPITAL:	0	EXISTENCE OF ELECTRICITY		NO. QUARIES	0	TOTAL OF PRIORITY PROJECTS		TOTAL ESTIMATED COSTS	
NO. HEALTH CENTRE:	0	✓ N: Y:		OTHER RESOURCES	3	04		118.000.000	
NO. DRILLED WELL:	0	EXISTENCE OF COM. NETWORK		ACCESS INTO VILLAGE					
NO. WELL:	0	✓ Y: N:		TARRED ROAD:		N			
NO. PUBLIC TAP:	0	EXISTENCE OF DEV'T COMMITTEE		EARTH ROAD:		N			
NO. PSYCHOSOCIAL CENTRE:	0	✓ N: Y:		FOOTPATH:		N			
NO. WAREHOUSE:	0			WATER:		Y			
NO. SPRINGS:	0			STATE OF ROAD:		AS			
BAINS DETIQUEURS:	N								
LIVESTOCK RESERVES:	0								

STATE OF VILLAGE OPOPO									
Typing date: 19/03/2015			REGION: SWR			COUNCIL: ISANGELE			
VILLAGE: OPOPO			DIVISION: NDIAN			SUBDIVISION: ISANGELE			
GEOGRAPHICAL COORDINATES									
X: 008.6399									
Y: 04.6752									
Z: 7m									
MEN:	131	VULNERABLE PERSONS				PRIORITY SOCIAL PROJECTS		ESTIMATED COST (FCFA)	
WOMEN:	102	DISABLED:	Y	PYGMIS:	N	1	WATER (BOREHOLE)	15.000.000	
CHILDREN:	153	STREET CHILDREN:	N	MBOROROS:	N	2	SCHOOL	23.000.000	
POP. SIZE:	386	ORPHANS:	Y			3	HEALTH POST	60.000.000	
		AGED:	Y			4	ELECTRICITY (SOLAR)	20.000.000	
INFRASTRUCTURES				PRINCIPAL AVAILABLE RESOURCES					
NO. HIGH SCHOOLS:	0	NO. MARKET	0	NO. FOREST	0	PRIORITY ECONOMIC PROJECTS		ESTIMATED COST	
NO. COLLEGES:	0	NO. TERMINAL	0	NO. LAKE	0	1	NIL	00	
NO. PRIMARY SCHOOL:	0	NO. SLUTERHOUSE	0	NO. PROTECTED PARKS	0	2	NIL	00	
NO. NURSERY SCHOOL:	0	NO. TREE NURSERY	0	NO. TOURISTIC SITE	0	3	NIL	00	
NO. HOSPITAL:	0	EXISTENCE OF ELECTRICITY		NO. QUARIES	0			TOTAL ESTIMATED COSTS	
NO. HEALTH CENTRE:	0	✓ N: Y:		OTHER RESOURCES (SAND, MANGROVE, CREEKS)	3			118.000.000	
NO. DRILLED WELL:	0	EXISTENCE OF COM. NETWORK							
NO. WELL:	0	✓ N: Y:		ACCESS INTO VILLAGE					
NO. PUBLIC TAP:	0			TARRED ROAD:		N			
NO. PSYCHOSOCIAL CENTRE:	0	EXISTENCE OF DEV'T COMMITTEE		EARTH ROAD:		N			
NO. WAREHOUSE:	0	✓ N: Y:		FOOTPATH:		N			
NO. SPRINGS:	0			WATER:		Y			
BAINS DETIQUEURS:	N			STATE OF ROAD:		AS			
LIVESTOCK RESERVES:	0			ORGANISATION OF VILLAGE					
				CHIEFDOM		III			
				NO. NEIGHBOURHOODS		04			

STATE OF VILLAGE ISO-OBO										
Typing date: 19/03/2015				REGION: SWR			COUNCIL: ISANGELE			
VILLAGE: ISO-OBO				DIVISION: NDIAN			SUBDIVISION: ISANGELE			
GEOGRAPHICAL COORDINATES										
X: 008.6145										
Y: 04.7537										
Z: 14m										
MEN:	379	VULNERABLE PERSONS				PRIORITY SOCIAL PROJECTS		ESTIMATED COST (FCFA)		
WOMEN:	329	DISABLED:	N	PYGMIS:	N	1	WATER (BOREHOLE)	15.000.000		
CHILDREN:	517	STREET CHILDREN:	N	MBOROROS:	N	2	SECONDARY SCHOOL	23.000.000		
POP. SIZE:	1225	ORPHANS:	Y			3	LATRINES	7.000.000		
		AGED:	Y			4	NIL	00		
						5	NIL	00		
INFRASTRUCTURES				PRINCIPAL AVAILABLE RESOURCES		PRIORITY ECONOMIC PROJECTS		ESTIMATED COST		
NO. HIGH SCHOOLS:	0	NO. MARKET	0	NO. FOREST	1	1	NIL	00		
NO. COLLEGES:	0	NO. TERMINAL	0	NO. LAKE	0	2	NIL	00		
NO. PRIMARY SCHOOL:	1	NO. SLUTERHOUSE	0	NO. PROTECTED PARKS	1	3	NIL	00		
NO. NURSERY SCHOOL:	0	NO. TREE NURSERY	0	NO. TOURISTIC SITE	0	TOTAL OF PRIORITY PROJECTS		TOTAL ESTIMATED COSTS		
NO. HOSPITAL:	0	EXISTENCE OF ELECTRICITY		NO. QUARIES	0	03		45.000.000		
NO. HEALTH CENTRE:	1	✓ Y: N:		OTHER RESOURCES (SAND, MANGROVE, CREEKS)	3					
NO. DRILLED WELL:	0	EXISTENCE OF COM. NETWORK		ACCESS INTO VILLAGE						
NO. WELL:	1	✓ Y: N:		TARRED ROAD:				N		
NO. PUBLIC TAP:	0	EXISTENCE OF DEV'T COMMITTEE		EARTH ROAD:				N		
NO. PSYCHOSOCIAL CENTRE:	0	✓ N: Y:		FOOTPATH:				N		
NO. WAREHOUSE:	0			WATER:				Y		
NO. SPRINGS:	0			STATE OF ROAD:				AS		
BAINS DETIQUEURS:	N			ORGANISATION OF VILLAGE						
LIVESTOCK RESERVES:	0			CHIEFDOM				III		
						NO. NEIGHBOURHOODS				06

5.5 Logical Framework per Sector

5.5.1. ELECTRIFICATION

<u>STATE OF ELECTRIFICATION AMOTO</u>					
TYPING DATE: 19/03/2015		REGION: S.W.R		COUNCIL: ISANGELE	
		DIVISION: NDIAN		Sub-division: ISANGELE	
VILLAGE/NEIGHBOURHOOD: AMOTO					
POPULATION: 6,092					
NAME OF PIECE OF WORK (S): RURAL ELECTRIFICATION					
<u>GEOGRAPHICAL COORDINATE OF GENERATOR</u>					
X: 008.6783					
Y: 04.7793					
Z: 33m					
<u>REALISATION</u>		<u>CHARACTERISTICS</u>		<u>FUNCTIONALITY</u>	
ENTERPRISE:		NATURE (i)	DE	WORKING NETWORK	N
SOURCE OF FINANCING:	PIB	NEIGHBOURHOOD	04	NO. OF DAMAGED TRANSFORMERS	0
OPENING DATE:	2006	NO. OF TRANSFORMERS	0	NO. OF DAMAGED POLES	2
INVOLUNTARY MOVE (Y/N)	N	NO. OF POLES INSTALLED	04	EXISTENCE OF VIGILANCE COMMITTEE (Y/N)	N
		LENGTH OF MEDIUM TENSION (THERMAL)	0	EXISTENCE OF MANAGEMENT COMMITTEE (Y/N)	N
		LENGTH OF MEDIUM TENSION (SOLAR)	N/A	N-NO Y-YES DE-DECENTRALISED ELECTRIFICATION N/A-NON APPLICABLE	
		LENGTH OF LOW TENSION (THERMAL)	0		
		LENGTH OF LOW TENSION (SOLAR)	N/A		
		NO. OF CONNECTIONS (THERMAL)	0		
		NO. OF CONNECTIONS (SOLAR)	N/A		

STATE OF ELECTRIFICATION BATEKA

		REGION: S.W.R		COUNCIL: ISANGELE	
		DIVISION: NDIAN		Sub-division: ISANGELE	
VILLAGE/NEIGHBOURHOOD: BATEKA					
POPULATION: 8,630					
NAME OF PIECE OF WORK (S): RURAL ELECTRIFICATION					
<u>GEOGRAPHICAL COORDINATE OF GENERATOR</u>					
X:008.6783					
Y: 04.7793					
Z: 33m					
<u>REALISATION</u>		<u>CHARACTERISTICS</u>		<u>FUNCTIONALITY</u>	
ENTERPRISE:		NATURE (i)	DE	WORKING NETWORK	N
SOURCE OF FINANCING:	PIB	NEIGHBOURHOOD	04	NO. OF DAMAGED TRANSFORMERS	0
OPENING DATE:	2006	NO. OF TRANSFORMERS	0	NO. OF DAMAGED POLES	3
INVOLUNTARY MOVE (Y/N)	N	NO. OF POLES INSTALLED	20	EXISTENCE OF VIGILANCE COMMITTEE (Y/N)	N
		LENGTH OF MEDIUM TENSION (THERMAL)	0	EXISTENCE OF MANAGEMENT COMMITTEE (Y/N)	N
		LENGTH OF MEDIUM TENSION (SOLAR)	N/A	N-NO Y-YES DE-DENCENTRALISED ELECTRIFICATION N/A-NON APPLICABLE	
		LENGTH OF LOW TENSION (THERMAL)	0		
		LENGTH OF LOW TENSION (SOLAR)	N/A		
		NO. OF CONNECTIONS (THERMAL)	0		
		NO. OF CONNECTIONS (SOLAR)	N/A		

STATE OF ELECTRIFICATION ORON

<u>TYPING DATE:</u> 19/03/2015		<u>REGION:</u> S.W.R		<u>COUNCIL:</u> ISANGELE	
		<u>DIVISION:</u> NDIAN		<u>Sub-division:</u> ISANGELE	
<u>VILLAGE/NEIGHBOURHOOD:</u> ORON					
<u>POPULATION:</u> 10,031					
<u>NAME OF PIECE OF WORK (S):</u> RURAL ELECTRIFICATION					
<u>GEOGRAPHICAL COORDINATE OF GENERATOR</u>					
X:008.6783					
Y: 04.7793					
Z: 33m					
<u>REALISATION</u>		<u>CHARACTERISTICS</u>		<u>FUNCTIONALITY</u>	
<u>ENTERPRISE:</u>		<u>NATURE (i)</u>	<u>DE</u>	<u>WORKING NETWORK</u>	<u>N</u>
<u>SOURCE OF FINANCING:</u>	PIB	<u>NEIGHBOURHOOD</u>	04	<u>NO. OF DAMAGED TRANSFORMERS</u>	0
<u>OPENING DATE:</u>	2006	<u>NO. OF TRANSFORMERS</u>	0	<u>NO. OF DAMAGED POLES</u>	1
<u>INVOLUNTARY MOVE (Y/N)</u>	N	<u>NO. OF POLES INSTALLED</u>	09	<u>EXISTENCE OF VIGILANCE COMMITTEE (Y/N)</u>	N
		<u>NO. OF SOLAR POLES</u>	N/A	<u>EXISTENCE OF MANAGEMENT COMMITTEE (Y/N)</u>	N
		<u>LENGTH OF MEDIUM TENSION (THERMAL)</u>	0	N-NO Y-YES N/A-NON APPLICABLE DE-DECENTRALISED ELECTRIFICATION	
		<u>LENGTH OF MEDIUM TENSION (SOLAR)</u>	N/A		
		<u>LENGTH OF LOW TENSION (THERMAL)</u>	0		
		<u>LENGTH OF LOW TENSION (SOLAR)</u>	N/A		
		<u>NO. OF CONNECTIONS (THERMAL)</u>	0		
		<u>NO. OF CONNECTIONS (SOLAR)</u>	N/A		

STATE OF ELECTRICITY ISO-OBO

TYPING DATE: 19/03/2015		REGION: S.W.R		COUNCIL: ISANGELE	
		DIVISION: NDIAN		Sub-division: ISANGELE	
VILLAGE/NEIGHBOURHOOD: ISO-OBO					
POPULATION:1,225					
NAME OF PIECE OF WORK (S):RURAL ELECTRIFICATION					
GEOGRAPHICAL COORDINATE OF GENERATOR					
X:008.7012					
Y: 04.8535					
Z: 6m					
GEOGRAPHICAL COORDINATE OF A SOLAR POLE					
X: 008.6151					
Y: 04.7534					
Z: 15m					
REALISATION		CHARACTERISTICS		FUNCTIONALITY	
ENTERPRISE:	ALPHA ENGINEERING	NATURE (i)	DE	WORKING NETWORK	Y
SOURCE OF FINANCING:	PIB	NEIGHBOURHOOD	06	NO. OF DAMAGED TRANSFORMERS	N
OPENING DATE:	2013	NO. OF TRANSFORMERS	01	NO. OF DAMAGED POLES	0
INVOLUNTARY MOVE (Y/N)	N	NO. OF THERMAL POLES INSTALLED	09	EXISTENCE OF VIGILANCE COMMITTEE (Y/N)	N
		NO. OF SOLAR POLES	09	EXISTENCE OF MANAGEMENT COMMITTEE (Y/N)	Y
		LENGTH OF MEDIUM TENSION (THERMAL)	0.4 km	N-NO Y-YES DE-DECENTRALISED ELECTRIFICATION N/A-NON APPLICABLE	
		LENGTH OF MEDIUM TENSION (SOLAR)	N/A		
		LENGTH OF LOW TENSION (THERMAL)	0		
		LENGTH OF LOW TENSION (SOLAR)	N/A		
		NO. OF CONNECTIONS (THERMAL)	15		
		NO. OF CONNECTIONS (SOLAR)	N/A		

5.5.3. EDUCATION

<u>STATE OF GNS, ISANGELE, BATEKA</u>									
<u>TYPING DATE:</u> 18/03/2015			<u>REGION:</u> S.W.R			<u>COUNCIL:</u> ISANGELE			
			<u>DIVISION:</u> NDIAN			<u>Sub-division:</u> ISANGELE			
<u>VILLAGE/LOCALITY:</u> BATEKA									
<u>SCHOOL NAME:</u> Government Nursery School (GNS) Isangele.									
<u>GEOGRAPHICAL COORDINATES</u>									
X: 008.6760									
Y: 04.7778									
Z: 30m									
<u>STATUS OF SCHOOL(i)</u>	<u>LEVEL(ii)</u>	<u>TOTAL NO. OF PUPILS</u>		<u>NO. & EQUIPMENT OF CLASSROOMS</u>					
✓ PUB PRI EPA	✓ 0 1 2	GIRLS:	10	DESKS: 7					
	3	BOYS:	10	<u>NON-PERMANENT MATERIAL</u>		<u>PLANNING (Y/N)</u>			
	4	TOTAL	20	POLES: NIL		WATER POINT:		N	
<u>CREATION YEAR:</u> 1991	5 6 7 OTHERS:	<u>TOTAL NO. OF TEACHERS</u>		PLANKS: NIL		LATRINES:		Y	
<u>REALISATION YEAR:</u> 1992		PTA:	01	SEMI-PERMANENT (Tables, Chairs etc.) :04		BIN:		N	
<u>SOURCE OF FINANCE:</u> PIB		CONTRACT:	01	<u>PERMANENT MATERIAL</u>		RE-AFFORESTATION:		N	
		CIVIL SERVANTS:	01	HARD (Building, Blackboard): 03		FENCE:		N	
		PUPIL/TEACHER RATIO:	10:1	<u>GENERAL STATE OF CONCRETE BUILDINGS</u>		TEACHERS RESIDENCE:		N	
		PUPIL/CLASS RATIO:	10:1	GOOD:	OTHERS:	<u>MANAGEMENT(Y/N)</u>			
		PUPIL/SEAT RATIO:	3:1	FAIR:	✓	PTA:		Y	
				BAD:		SCHOOL COUNCIL:		N	
N-NO Y-YES						INVOLUNTARY MOVE (Y/N):			

STATE OF GS ISANGELE, BATEKA

<u>TYPING DATE:</u> 18/03/2015		<u>REGION:</u> S.W.R		<u>COUNCIL:</u> ISANGELE	
		<u>DIVISION:</u> NDIAN		<u>Sub-division:</u> ISANGELE	
<u>VILLAGE/LOCALITY:</u> BATEKA					
<u>SCHOOL NAME:</u> Government School (GS) Isangele.					
<u>GEOGRAPHICAL COORDINATES</u>					
X: 008.6800					
Y: 04.7796					
Z: 40m					
<u>STATUS OF SCHOOL(i)</u>	<u>LEVEL(ii)</u>	<u>TOTAL NO. OF PUPILS</u>		<u>NO. & EQUIPMENT OF CLASSROOMS</u>	<u>PLANNING (Y/N)</u>
✓ PUB PRI EPA	0	<u>TOTAL NO. OF PUPILS</u>		DESKS: 49	WATER POINT: N
	1				
	2				
	✓ 3	GIRLS:	209	NON-PERMANENT MATERIAL	LATRINES: Y
	4				
	5	BOYS:	171	POLES: 02	BIN: N
<u>CREATION YEAR:</u> 1961	6	TOTAL	380	PLANKS: NIL	RE-AFFORESTATION: N
<u>REALISATION YEAR:</u> 1961	7	<u>TOTAL NO. OF TEACHERS</u>		SEMI-PERMANENT (Tables, Chair etc.): 07	FENCE: N
<u>SOURCE OF FINANCE:</u> PIB	OTHERS:	PTA:	01	PERMANENT MATERIAL	TEACHERS RESIDENCE: N
		CONTRACT:	03	HARD (Building, Blackboard): 10	OTHERS:
		CIVIL SERVANTS:	0	GENERAL STATE OF CONCRETE BUILDINGS	<u>MANAGEMENT(Y/N)</u>
		PUPIL/TEACHER RATIO:	95:1	GOOD:	PTA: Y
		PUPIL/CLASS RATIO:	1:1	FAIR: ✓	SCHOOL COUNCIL: N
	PUPIL/SEAT RATIO:	4:1	BAD:	INVOLUNTARY MOVE (Y/N): Y	
NB: WATER POINT (A DRILLED WELL WITH MANUAL HAND PUMP) BUT HAS DRIED OUT.					

STATE OF PRIMARY SCHOOL, IDIBANYANGA

TYPING DATE: 18/03/2015		REGION: S.W.R		COUNCIL: ISANGELE	
		DIVISION: NDIAN		Sub-division: ISANGELE	
VILLAGE/LOCALITY: IDIBANYANGA					
SCHOOL NAME: Government School (G.S) IDIBANYANGA.					
<u>GEOGRAPHICAL COORDINATES</u>					
X: 008.7014					
Y: 04.8528					
Z: 32m					
<u>STATUS OF SCHOOL(i)</u>	<u>LEVEL(ii)</u>	<u>TOTAL NO. OF PUPILS</u>		<u>NO. & EQUIPMENT OF CLASSROOMS</u>	
✓ PUB PRI EPA	0	GIRLS:	72	DESKS: 120	WATER POINT: N
	1				
	2				
	✓ 3	BOYS:	110	<u>NON-PERMANENT MATERIAL</u>	LATRINES: Y
	4				
	5	TOTAL	182	POLES: NIL	BIN: N
<u>CREATION YEAR:</u> 2008	6	<u>TOTAL NO. OF TEACHERS</u>		PLANKS: NIL	RE-AFFORESTATION: N
<u>REALISATION YEAR:</u> 2008	7				
<u>SOURCE OF FINANCE:</u> PIB& FEICOM	OTHERS:	PTA:	0	SEMI-PERMANENT (Table, Chair etc.): 02	FENCE: N
		CONTRACT:	01	<u>PERMANENT MATERIAL</u>	TEACHERS RESIDENCE: Y
		CIVIL SERVANTS:	0		HARD: (Building, Blackboard etc.): 09
		PUPIL/TEACHER RATIO:	182:1		
		PUPIL/CLASS RATIO:	30:1		
		PUPIL/SEAT RATIO:	2:1	<u>GENERAL STATE OF CONCRETE BUILDINGS</u>	
				<u>MANAGEMENT(Y/N)</u>	
				GOOD: ✓	PTA: Y
				FAIR:	SCHOOL COUNCIL: N
				BAD:	INVOLUNTARY MOVE (Y/N): Y

STATE OF PRIMARY SCHOOL, MASSAKA									
TYPING DATE: 18/03/2015				REGION: S.W.R		COUNCIL: ISANGELE			
				DIVISION: NDIAN		Sub-division: ISANGELE			
VILLAGE/LOCALITY: MASSAKA									
SCHOOL NAME: Government School (G.S) MASSAKA.									
GEOGRAPHICAL COORDINATES									
X: 008.7528									
Y: 04.8410									
Z: 2m									
STATUS OF SCHOOL(i)	LEVEL(ii)	TOTAL NO. OF PUPILS		NO. & EQUIPMENT OF CLASSROOMS		PLANNING (Y/N)			
✓ PUB PRI EPA	0	GIRLS:	120	DESKS: 88		WATER POINT:		N	
	1								
	2								
	✓ 3	BOYS:	50	NON-PERMANENT MATERIAL		LATRINES:		N	
	4								
	5	TOTAL	170	POLES: NIL		BIN:		N	
CREATION YEAR: 1990	6	TOTAL NO. OF TEACHERS		SEMI-PERMANENT (Table, Chair etc.): 02		PLANKS: NIL			
	7								
REALISATION YEAR: 2008	OTHERS:	PTA:	0	PERMANENT MATERIAL		FENCE:		N	
SOURCE OF FINANCE: PIB		CONTR ACT:	01	HARD (Building, Blackboard etc.): 09		TEACHERS RESIDENCE:		Y	
		CIVIL SERVANTS:	0			OTHERS:			
		PUPIL/TEACHER RATIO:	170:1	GENERAL STATE OF CONCRETE BUILDINGS		MANAGEMENT(Y/N)			
		PUPIL/CLASS RATIO:	35:1	GOOD:		PTA:			
		PUPIL/SEAT RATIO:	2:1	FAIR:		✓ SCHOOL COUNCIL:			
				BAD:		INVOLUNTARY MOVE (Y/N):			

STATE OF PRIMARY SCHOOL, ISO-OBO

<u>TYPING DATE:</u> 18/03/2015		<u>REGION:</u> S.W.R		<u>COUNCIL:</u> ISANGELE	
		<u>DIVISION:</u> NDIAN		<u>Sub-division:</u> ISANGELE	
<u>GEOGRAPHICAL COORDINATES</u>					
X: 008.6147					
Y: 04.7529					
Z: 9m					
<u>STATUS OF SCHOOL(i)</u>	<u>LEVEL(ii)</u>	<u>TOTAL NO. OF PUPILS</u>		<u>NO. & EQUIPMENT OF CLASSROOMS</u>	
✓ PUB PRI EPA	0	GIRLS:	90	DESKS: 60	WATER POINT: N
	1				
	2				
	✓ 3	BOYS:	150	NON-PERMANENT MATERIAL	LATRINES: N
	4				
	5	TOTAL	240	POLES: NIL	BIN: N
<u>CREATION YEAR:</u> 2007	6	<u>TOTAL NO. OF TEACHERS</u>			PLANKS: NIL N
	7				
<u>REALISATION YEAR:</u> 2007	OTHERS:	PTA:	0	SEMI-PERMANENT (Table, Chair etc.): 08	FENCE: N
<u>SOURCE OF FINANCE:</u> PIB		CONTRACT:	03	PERMANENT MATERIAL	TEACHERS RESIDENCE: N
		CIVIL SERVANTS:	0	HARD (Building, Blackboard etc.): 07	OTHERS:
		PUPIL/TEACHER RATIO:	80:1	<u>MANAGEMENT(Y/N)</u>	
		PUPIL/CLASS RATIO:	40:1	PTA:	N
		PUPIL/SEAT RATIO:	4:1	SCHOOL COUNCIL:	N
		<u>GENERAL STATE OF CONCRETE BUILDINGS</u>			INVOLUNTARY MOVE (Y/N): N
		GOOD:	✓		
		FAIR:			
		BAD:			

STATE OF SECONDARY SCHOOL ISANGELE,BATEKA									
<u>TYPING DATE:</u> 18/03/2015			<u>REGION:</u> S.W.R			<u>COUNCIL:</u> ISANGELE			
			<u>DIVISION:</u> NDIAN			<u>Sub-division:</u> ISANGELE			
<u>GEOGRAPHICAL COORDINATES</u>									
X: 008.6775									
Y: 04.7796									
Z:29m									
<u>STATUS OF SCHOOL(i)</u>	<u>LEVEL(ii)</u>	<u>TOTAL NO. OF PUPILS</u>		<u>NO. & EQUIPMENT OF CLASSROOMS</u>			<u>PLANNING (Y/N)</u>		
✓ PUB PRI EPA	0	GIRLS:	37	DESKS: 208			WATER POINT:		N
	1								
	2								
	3	BOYS:	47	NON-PERMANENT MATERIAL			LATRINES:		Y
	4	TOTAL	84	POLES: NIL			BIN:		N
<u>CREATION YEAR:</u> 1991	✓ 5	<u>TOTAL NO. OF TEACHERS</u>		PLANKS: NIL			RE-AFFORESTATION:		N
<u>REALISATION YEAR:</u> 1991	6	PTA:	13	SEMI-PERMANENT(Table, Chair etc.): 12			FENCE		N
<u>SOURCE OF FINANCE:</u> PIB	7	CONTRACT:	0				TEACHERS RESIDENCE:		N
	OTHERS:	CIVIL SERVANTS:	8	PERMANENT MATERIAL			OTHERS:		
		PUPIL/TEACHER RATIO:	4:1	HARD (Building, Blackboard etc.): 10			<u>MANAGEMENT(Y/N)</u>		
		PUPIL/CLASS RATIO:	18:1	GENERAL STATE OF CONCRETE BUILDINGS			PTA:		Y
		PUPIL/SEAT RATIO:	1:1	✓ GOOD:			SCHOOL COUNCIL:		N
					FAIR:			INVOLUNTARY MOVE (Y/N):	
				BAD:					
NB: <ul style="list-style-type: none"> - STAFF RESIDENCE IS INSUFFICIENT TO ACCOMMODATE ALL STAFF. - IT INVOLVED PAYMENT OF REPAIRS AND MAINTENANCE FEES INTO THE COUNCIL TREASURY BUT SOME STAFF ARE HESITANTING TO PAY. 									

5.5.3 HEALTH

STATE OF HEALTH CMA, ISANGELE									
Typing		REGION: S.W.R				COUNCIL: ISANGELE			
Date: 18/03/2015		DIVISION: NDIAN				Sub-division: ISANGELE			
VILLAGE/NEIGHBOURHOOD:						BATEKA			
POPULATION:									
NAME OF CENTRE:						C.M.A			
GEOGRAPHICAL COORDINATES									
X: 008.6791									
Y: 04.7793									
Z: 41m									
REALISATION		TYPE OF HEALTH CENTRE		INFRASTRUCTURES		PLANNING(Y/N)			
REALISATION DATE:	2007	INTERGRATED:		NO. OF BUILDINGS		2		WATER POINT:	N
ENTERPRISE:	GENIE MILITAIRE	PRIVATE:		STATE OF BUILDING		LATRINE:		Y	
SOURCE OF FINANCE:	PIB	✓ HOSPITAL:		GOOD		✓		RE-AFFORESTATION:	N
CONSTRUCTION YEAR:	2007	OTHERS:		FAIR				FENCE:	N
GENERAL INFORMATION ABOUT THE CENTRE:		SATELLITE:		BAD				WASTE TREATMENT FACILITY:	N
								STAFF RESIDENCE:	Y
HEALTH AREA: ISANGELE		CREATION YEAR		CENTRE UNITS		HEALTH DATA			
HEALTH DISTRICT: BAKASSI				THEATRE	Y		TYPE OF VACCIN ADMINISTERED		8
				LABORATORY	Y		FREQUENCY RATE (monthly)		13.3
PERSONNEL				MATERNITY	Y		AVERAGE NUMBER OF DELIVERY		4/Annum
STATE:	2			PHARMACY	Y		EPIDEMIC DISEASES		NONE
PTENTED	0								
ASSISTANT	10								
MATRON	0							MANAGEMENT	
COMIS	0			CENTRE EQUIPMENTS		EXISTENCE OF Mgt. COMMITTEE		N	
	INVOLUNTARY MOVE	Y	BED	15		EXISTENCE OF HEALTH COMMITTEE		Y	
			REFRIGERATOR	3					

STATE OF HEALTH ISO-OBO

Typing		REGION: S.W.R		COUNCIL: ISANGELE	
Date: 18/03/2015		DIVISION: NDIAN		Sub-division: ISANGELE	
VILLAGE/NEIGHBOURHOOD:		ISO-OBO			
POPULATION:					
NAME OF CENTRE:		INTERGRATED HEALTH CENTRE			
<u>GEOGRAPHICAL COORDINATES</u>					
X: 008.6147					
Y: 04.7528					
Z: 12m					
<u>REALISATION</u>		<u>TYPE OF HEALTH CENTRE</u>		<u>INFRASTRUCTURES</u>	
REALISATION DATE:	2007	✓ INTERGRATED:		NO. OF BUILDINGS	1
ENTERPRISE:	GENIE MILITAIRE	PRIVATE:		<u>STATE OF BUILDING</u>	
SOURCE OF FINANCE:	PIB	HOSPITAL:		GOOD	
CONSTRUCTION YEAR:	2007	OTHERS:		FAIR	
<u>GENERAL INFORMATION ABOUT THE CENTRE:</u>		SATELLITE:		BAD	X
HEALTH AREA: ISANGELE				<u>CENTRE UNITS</u>	
HEALTH DISTRICT: BAKASSI				THEATRE	N
		LABORATORY	N	LABORATORY	N
INVOLUNTARY MOVE	Y	MATERNITY	Y	MATERNITY	Y
		PHARMACY	Y	PHARMACY	Y
		MEDICAL DOCTOR:	0	<u>CENTRE EQUIPMENTS</u>	
		STATE:	01	BED	0
		PTENTED	0	REFRIGERATOR	0
		ASSISTANT	0	<u>MANAGEMENT</u>	
		MATRON	0	EXISTENCE OF Mgt. COMMITTEE	
		COMIS	0	EXISTENCE OF HEALTH COMMITTEE	

5.5.4 WATER

5.5.4.1 WATER PROVISION

<u>STATE OF WATER PROVISION WATER PROVISION, BATEKA</u>							
<u>Typing Date:</u> 19/03/2015				<u>REGION:</u> S.W.R		<u>COUNCIL:</u> ISANGELE	
				<u>DIVISION:</u> NDIAN		<u>Sub-division:</u> ISANGELE	
<u>VILLAGE/NEIGHBOURHOOD</u>				BATEKA			
<u>POPULATION</u>				8,633			
<u>GEOGRAPICAL COORDINATES FOR WATER CATCHMENT</u>							
X:008.7853							
Y:04.6785							
Z:29m							
<u>GEOGRAPHICAL COORDINATES FOR WATER TANK</u>							
X:008.6774							
Y:04.7854							
Z:39m							
<u>NAME OF PIECE OF WORK</u>				<u>CHARACTERISTICS OF WORK</u>		<u>FUNCTIONING</u>	
SCANWATER	✓	PORTABLE DRINKING H2O	CDE	WATER INTAKE(i)	P	FUNCTIONAL CANALIZATION	N
				NUMBER OF RESERVOIRS	1	FUNCTIONAL COLECTING TANK	N
<u>REALISATION</u>				NUMBER OF DRILLED WELLS	0	EXHAURE/FUNCTIONAL	N
ENTERPRISE	ITOCAM	Enterprise		NO. OF PUBLIC DRINKING FOUNTAIN	11	STORAGE/FUNCTIONAL	N
SOURCE OF FINANCE	PIB			NO. OF CONNECTIONS	15	DISTRIBUTION/FUNCTIONAL	N
OPENING DATE	2012			TANK CAPACITY (m3)	2000	TYPE OF CANALIZATION	NIL
INVOLUNTARY MOVE	N			TYPE OF PIPE	PLASTIC		
				<u>MANAGEMENT(ii)</u>			
				NO. OF DAMAGED PUBLIC DRINKING TAPS	0		
				FUNCTIONAL NETWORK	N		
				LENGTH OF PIPES(m)	6		

STATE OF WATER PROVISION, ORON									
Typing Date: 19/03/2015				REGION: S.W.R		COUNCIL: ISANGELE			
				DIVISION: NDIAN		Sub-division: ISANGELE			
VILLAGE/NEIGHBOURHOOD					ORON				
POPULATION					10,031				
GEOGRAPICAL COORDINATES FOR WATER CATCHMENT									
X:008.7853									
Y:04.6785									
Z:29m									
GEOGRAPHICAL COORDINATES FOR WATER TANK									
X:008.6774									
Y:04.7854									
Z:39m									
NAME OF PIECE OF WORK		SCANWATER		CHARACTERISTICS OF WORK		FUNCTIONING			
		✓ PORTABLE DRINKING H2O		WATER INTAKE(i)		P		FUNCTIONAL CANALIZATION	
		CDE		NUMBER OF RESERVOIRS		1		FUNCTIONAL COLECTING TANK	
REALISATION				NUMBER OF DRILLED WELLS		0		EXHAURE/FUNCTIONAL	
ENTERPRISE		ITOCAM Enterprise		NO. OF PUBLIC DRINKING FOUNTAIN		02		STORAGE/FUNCTIONAL	
SOURCE OF FINANCE		PIB		NO. OF CONNECTIONS		15		DISTRIBUTION/FUNCTIONAL	
OPENING DATE		2012		TANK CAPACITY (m3)		2000		TYPE OF CANALIZATION	
INVOLUNTARY MOVE		N		TYPE OF PIPE		PLASTIC			
					MANAGEMENT(ii)				
					NO. OF DAMAGED PUBLIC DRINKING TAPS				0
					FUNCTIONAL NETWORK				N
					LENGTH OF PIPES(m)				6

STATE OF WATER PROVISION, AMOTO						
Typing Date: 19/03/2015		REGION: S.W.R		COUNCIL: ISANGELE		
		DIVISION: NDIAN		Sub-division: ISANGELE		
VILLAGE/NEIGHBOURHOOD				AMOTO		
POPULATION				6,092		
GEOGRAPICAL COORDINATES FOR WATER CATCHMENT						
X:008.7853						
Y:04.6785						
Z:29m						
GEOGRAPHICAL COORDINATES FOR WATER TANK						
X:008.6774						
Y:04.7854						
Z:39m						
NAME OF PIECE OF WORK	SCANWATER	CHARACTERISTICS OF WORK		FUNCTIONING		
	✓ PORTABLE DRINKING H2O	WATER INTAKE(i)	P	FUNCTIONAL CANALIZATION	N	
	CDE	NUMBER OF RESERVOIRS	1	FUNCTIONAL COLECTING TANK	N	
REALISATION		NUMBER OF DRILLED WELLS	0	EXHAURE/FUNCTIONAL	N	
ENTERPRISE	ITOCAM Enterprise	NO. OF PUBLIC DRINKING FOUNTAIN	03	STORAGE/FUNCTIONAL	N	
SOURCE OF FINANCE	PIB	NO. OF CONNECTIONS	15	DISTRIBUTION/FUNCTIONAL	N	
OPENING DATE	2012	TANK CAPACITY (m3)	2000	TYPE OF CANALIZATION	NIL	
INVOLUNTARY MOVE	N	TYPE OF PIPE	PLASTIC			
			MANAGEMENT(ii)			
			NO. OF DAMAGED PUBLIC DRINKING TAPS		0	
			FUNCTIONAL NETWORK		N	
			LENGTH OF PIPES(m)		6	

5.5.4.2 WELLS

<u>STATE OF MANUAL WELL ISO-OBO</u>					
Typing Date: 18/03/2015		REGION: S.W.R		COUNCIL: ISANGELE	
		DIVISION: NDIAN		Sub-division: ISANGELE	
VILLAGE/NEIGHBOURHOOD: ISO-OBO					
POPULATION (a): 1,225					
NAME OF WELL: COMMUNITY WELL					
<u>GEOGRAPHICAL COORDINATES</u>					
X: 008.6145					
Y: 04.7537					
Z: 14m					
<u>REALISATION</u>		<u>CHARACTERISTICS</u>			
ENTERPRISE:	Community	COVERED WELL	N	USAGE OF PIECE OF WORK	EX
FINANCING SOURCE:	Community	PAVEMENT	N	EXISTENCE OF MANAGEMENT COMMITTEE	EX
OPENING DATE:	1995	CLEANED AREA	Y	FUNCTIONING OF MANAGEMENT COMMITTEE	N
		TYPE OF PUMP	N/A	<u>QUANTITY AND QUALITY OF WATER</u>	
		MARK OF PUMP	N/A	SUFFICIENT QUANTITY	Y
		CURB-STONE MATERIAL(cm)	N/A	WATER QUALITY	L
		CURB-STONE HEIGHT	0cm	WATER RELATED DISEASES	Y
		CASING	N/A	N-NO Y-YES EX-EXPLIOTED N/A-NON APPLICABLE L-LIGHTLY TROUBLE	
		WELL DIAMETER(m)	0.8m		
		DEPTH OF WELL(m)	7m		
		DEPTH OF WATER(m)	2m		
		WORKING	Y		

STATE OF MANUAL WELL, MASSAKA

Typing Date: 18/03/2015		REGION: S.W.R		COUNCIL: ISANGELE	
		DIVISION: NDIAN		Sub-division: ISANGELE	
VILLAGE/NEIGHBOURHOOD: MASSAKA					
POPULATION (a): 1,342					
NAME OF WELL: COMMUNITY WELL					
<u>GEOGRAPHICAL COORDINATES</u>					
X: 008.7527					
Y: 04.8415					
Z: 5m					
<u>REALISATION</u>		<u>CHARACTERISTICS</u>			
ENTERPRISE:	Community	COVERED WELL	N	USAGE OF PIECE OF WORK	EX
FINANCING SOURCE:	Community	PAVEMENT	N	EXISTENCE OF MANAGEMENT COMMITTEE	EX
OPENING DATE:	1989	CLEANED AREA	N	FUNCTIONING OF MANAGEMENT COMMITTEE	N
		TYPE OF PUMP	N/A	<u>QUANTITY AND QUALITY OF WATER</u>	
		MARK OF PUMP	N/A	SUFFICIENT QUANTITY	Y
		CURB-STONE MATERIAL(cm)	N/A	WATER QUALITY	L
		CURB-STONE HEIGHT	0cm	WATER RELATED DISEASES	Y
		CASING	N/A	N-NO Y-YES EX-EXPLIOTED N/A-NON APPLICABLE L-LIGHTLY TROUBLE	
		WELL DIAMETER(m)	1m		
		DEPTH OF WELL(m)	9m		
		DEPTH OF WATER(m)	3m		
		WORKING	Y		

5.5.4.3. DRILLED WELLS

<u>STATE OF DRILLED WELL, SAR/SM</u>							
Typing Date: 19/03/2015		REGION: S.W.R		COUNCIL: ISANGELE			
		DIVISION: NDIAN		Sub-division: ISANGELE			
VILLAGE/NEIGHBOURHOOD			GOVERNMENT RURAL ARTISAN CENTRE - BATEKA				
POPULATION							
<u>GEOGRAPHICAL COORDINATES</u>							
X:008.6774							
Y:04.7860							
Z:36m							
<u>REALISATION</u>		<u>CHARACTERISTICS OF PIECE OF WORK</u>		<u>MAINTENANCE</u>		<u>AMENAGEMENT</u>	
ENTERPRISE	Transit Enterprise	PAVEMENT	Y	EXISTENCE OF MANAGEMENT COMMITTEE	N	DRY WELL	N
SOURCE OF FINANCE	PIB	CLEANED AREA	Y	WORKING MANAGEMENT COMMITTEE	N	TREE	N
OPENING DATE	2012	DIAMETER OF DRILLED WELL	900mm	<u>QUANTITY AND QUALITY OF WATER</u>		LOW WALL	N
INVOLUNTARY MOVE	N	HEIGHT OF WATER	2m	SUFFICIENT QUANTITY	Y	OTHERS	L
		TYPE OF PUMP	MANUAL HAND PUMP	QUALITY OF WATER	L		
		MARK	INDIA MARK II	WATER RELATED DISEASES	N		
		DEPTH OF DRILL WELL	30m	N-NO Y-YES L-LIGHTLY TROUBLE R- S			
		WORKING	N				
		CAUSE OF DAMAGED	PUMP DAMAGED				
		STATE OF PIECE OF WORK	R				
		MATERIAL OF BASE	S				
		HEIGHT OF BASE	1m				

STATE OF DRILLED WELL, D.Os RESIDENCE

Typing Date: 19/03/2015		REGION: S.W.R		COUNCIL: ISANGELE	
		DIVISION: NDIAN		Sub-division: ISANGELE	
VILLAGE/NEIGHBOURHOOD		DIVISIONAL OFFICER'S RESIDENCE - BATEKA			
POPULATION					
<u>GEOGRAPHICAL COORDINATES</u>					
X:008.6784					
Y:04.7794					
Z:30m					
<u>REALISATION</u>		<u>CHARACTERISTICS OF PIECE OF WORK</u>		<u>MAINTENANCE</u>	
ENTERPRISE	TRANSIT Enterprise	PAVEMENT	Y	EXISTENCE OF MANAGEMENT COMMITTEE	N
SOURCE OF FINANCE	PIB	CLEANED AREA	Y	WORKING MANAGEMENT COMMITTEE	N
OPENING DATE	2010	DIAMETER OF DRILLED WELL	900mm	<u>QUANTITY AND QUALITY OF WATER</u>	
INVOLUNTARY MOVE	Y	HEIGHT OF WATER	3m	SUFFICIENT QUANTITY	Y
		TYPE OF PUMP	MANUAL HAND PUMP	QUALITY OF WATER	G
		MARK	INDIA MARK II	WATER RELATED DISEASES	N
		DEPTH OF DRILL WELL	28m	N-NO Y-YES C-CLEAR G-GOOD S-STEEL	
		WORKING	Y		
		CAUSE OF DAMAGED	N		
		STATE OF PIECE OF WORK	G		
		MATERIAL OF BASE	S		
		HEIGHT OF BASE	1m		

STATE OF DRILLED WELL, COLD STORE

Typing Date: 19/03/2015		REGION: S.W.R		COUNCIL: ISANGELE	
		DIVISION: NDIAN		Sub-division: ISANGELE	
VILLAGE/NEIGHBOURHOOD		COUNCIL COLD STORE - BATEKA			
POPULATION					
GEOGRAPHICAL COORDINATES					
X:008.6783					
Y:04.7816					
Z:28m					
REALISATION		CHARACTERISTICS OF PIECE OF WORK		MAINTENANCE	
ENTERPRISE	Transit Enterprise	PAVEMENT	Y	EXISTENCE OF MANAGEMENT COMMITTEE	N
SOURCE OF FINANCE	PIB	CLEANED AREA	N	WORKING MANAGEMENT COMMITTEE	N
OPENING DATE	2012	DIAMETER OF DRILLED WELL	900mm	QUANTITY AND QUALITY OF WATER	
INVOLUNTARY MOVE	N	HEIGHT OF WATER	3m	SUFFICIENT QUANTITY	Y
		TYPE OF PUMP	MOTOR PUMP	QUALITY OF WATER	C
		MARK		WATER RELATED DISEASES	N
		DEPTH OF DRILL WELL	23m	N-NO Y-YES C-CLEAR R-TO RESTORE S-STEEL	
		WORKING	N		
		CAUSE OF DAMAGED	ABANDONED		
		STATE OF PIECE OF WORK	R		
		MATERIAL OF BASE	S		
		HEIGHT OF BASE	N/A		

STATE OF DRILLED WELL, G.S.ISANGELE

Typing Date: 19/03/2015		REGION: S.W.R		COUNCIL: ISANGELE	
		DIVISION: NDIAN		Sub-division: ISANGELE	
VILLAGE/NEIGHBOURHOOD		GOVERNMENT PRIMARY SCHOOL ISANGELE - BATEKA			
POPULATION					
GEOGRAPHICAL COORDINATES					
X:008.6799					
Y:04.7801					
Z:32m					
REALISATION		CHARACTERISTICS OF PIECE OF WORK		MAINTENANCE	
				AMENAGEMENT	
ENTERPRISE	MBOE & SONS Enterprise	PAVEMENT	Y	EXISTENCE OF MANAGEMENT COMMITTEE	N
SOURCE OF FINANCE	PIB	CLEANED AREA	Y	WORKING MANAGEMENT COMMITTEE	N
OPENING DATE	2010	DIAMETER OF DRILLED WELL	900mm	QUANTITY AND QUALITY OF WATER	
INVOLUNTARY MOVE	N	HEIGHT OF WATER	0m	SUFFICIENT QUANTITY	N
		TYPE OF PUMP	MANUAL HAND PUMP	QUALITY OF WATER	T
		MARK	INDIA MARK II	WATER RELATED DISEASES	N
		DEPTH OF DRILL WELL	25m	N-NO Y-YES T-TROUBLE AS-DRIED UP S-STEEL	
		WORKING	N		
		CAUSE OF DAMAGED	N		
		STATE OF PIECE OF WORK	AS		
		MATERIAL OF BASE	S		
		HEIGHT OF BASE	1m		

5.5.4.4 WATER SOURCES

<u>STATE OF WATER SOURCE AMOTO</u>					
TYPING DATE: 19/03/2015			REGION: S.W.R		COUNCIL: ISANGELE
			DIVISION: NDIAN		Sub-division: ISANGELE
<u>VILLAGE/NEIGHBOURHOOD</u>		<u>POPULATION</u>			
AMOTO		6,092			
NAME OF PIECE OF WORK:		COMMUNITY WORK			
TYPE OF PIECE OF WORK:		NATURAL SOURCE			
QUANTITY:		N/A			
<u>GEOGRAPHICAL COORDINATES</u>					
X:008.6774					
Y:04.7774					
Z:7m					
<u>REALISATION</u>		<u>CHARACTERISTICS</u>		<u>MAINTENANCE</u>	
ENTERPRISE:	COMMUNITY	PIECE OF WORK COVERED (Y/N)	N	RUNNING OF THE PIECE OF WORK (ii)	EXPL OITE D
SOURCE OF FINANCE:	COMMUNITY	CLEANED-UP AREA (Y/N)	Y	EXISTENCE OF MANAGEMENT COMMITTEE (Y/N)	N
OPENING DATE:		FLOW RATE (M3/s)		FUNCTIONAL MANAGEMENT COMMITTEE (Y/N)	N
		TYPE OF FLOW	PERMANENT	<u>WATER QUALITY</u>	
		WORKING (Y/N)	Y	SUFFICIENT QUANTITY (Y/N)	Y
		STATE OF THE WATER POINT	GOOD	QUALITY OF WATER (iii)	T
		INVOLUNTARY MOVE (Y/N)	N	WATER RELATED DISEASES (Y/N)	Y

STATE OF WATER SOURCE BATEKA

TYPING DATE: 19/03/2015		REGION: S.W.R		COUNCIL: ISANGELE	
		DIVISION: NDIAN		Sub-division: ISANGELE	
<u>VILLAGE/NEIGHBOURHOOD</u>		<u>POPULATION</u>			
BATEKA		8,630			
NAME OF PIECE OF WORK:		COMMUNITY WORK			
TYPE OF PIECE OF WORK:		NATURAL SOURCE			
QUANTITY:		N/A			
<u>GEOGRAPHICAL COORDINATES</u>					
X:008.6826					
Y:04.7792					
Z:34m					
<u>REALISATION</u>		<u>CHARACTERISTICS</u>		<u>MAINTENANCE</u>	
ENTERPRISE:	COMMUNITY	PIECE OF WORK COVERED (Y/N)	N	RUNNING OF THE PIECE OF WORK (ii)	EXPLOITED
SOURCE OF FINANCE:	COMMUNITY	CLEANED-UP AREA (Y/N)	Y	EXISTENCE OF MANAGEMENT COMMITTEE (Y/N)	N
OPENING DATE:		FLOW RATE (M3/s)		FUNCTIONAL MANAGEMENT COMMITTEE (Y/N)	N
N-NO Y-YES T-TROUBLE		TYPE OF FLOW	PERMANENT	<u>WATER QUALITY</u>	
		WORKING (Y/N)	Y	SUFFICIENT QUANTITY (Y/N)	Y
		STATE OF THE WATER POINT	GOOD	QUALITY OF WATER (iii)	T
		INVOLUNTARY MOVE (Y/N)	N	WATER RELATED DISEASES (Y/N)	Y

STATE OF WATER SOURCE DIBONDORIKPA

TYPING DATE: 19/03/2015		REGION: S.W.R		COUNCIL: ISANGELE	
		DIVISION: NDIAN		Sub-division: ISANGELE	
<u>VILLAGE/NEIGHBOURHOOD</u>	<u>POPULATION</u>				
DIBONDORIKPA	721				
NAME OF PIECE OF WORK:	COMMUNITY WORK				
TYPE OF PIECE OF WORK:	NATURAL SOURCE				
QUANTITY:	N/A				
<u>GEOGRAPHICAL COORDINATES</u>					
X:008.7180					
Y:04.7678					
Z:9m					
<u>REALISATION</u>		<u>CHARACTERISTICS</u>		<u>MAINTENANCE</u>	
ENTERPRISE:	COMMUNITY				
SOURCE OF FINANCE:	COMMUNITY	PIECE OF WORK COVERED (Y/N)	N	RUNNING OF THE PIECE OF WORK (ii)	EXPLOITED
OPENING DATE:		CLEANED-UP AREA (Y/N)	Y	EXISTENCE OF MANAGEMENT COMMITTEE (Y/N)	N
		FLOW RATE (M3/s)		FUNCTIONAL MANAGEMENT COMMITTEE (Y/N)	N
		TYPE OF FLOW	PERMANENT	<u>WATER QUALITY</u>	
		WORKING (Y/N)	Y	SUFFICIENT QUANTITY (Y/N)	Y
		STATE OF THE WATER POINT	GOOD	QUALITY OF WATER (iii)	T
		INVOLUNTARY MOVE (Y/N)	N	WATER RELATED DISEASES (Y/N)	Y

STATE OF WATER SOURCE MASSAKA

TYPING DATE: 19/03/2015		REGION: S.W.R		COUNCIL: ISANGELE	
		DIVISION: NDIAN		Sub-division: ISANGELE	
<u>VILLAGE/NEIGHBOURHOOD</u>		<u>POPULATION</u>			
MASSAKA		1,342			
NAME OF PIECE OF WORK:		COMMUNITY WORK			
TYPE OF PIECE OF WORK:		NATURAL SOURCE			
QUANTITY:		N/A			
<u>GEOGRAPHICAL COORDINATES</u>					
X: 008.7511					
Y: 04.8520					
Z: 1m					
<u>REALISATION</u>		<u>CHARACTERISTICS</u>		<u>MAINTENANCE</u>	
ENTERPRISE:	COMMUNITY	PIECE OF WORK COVERED (Y/N)	N	RUNNING OF THE PIECE OF WORK (ii)	EXPLOITED
SOURCE OF FINANCE:	COMMUNITY	CLEANED-UP AREA (Y/N)	Y	EXISTENCE OF MANAGEMENT COMMITTEE (Y/N)	N
OPENING DATE:		FLOW RATE (M3/s)		FUNCTIONAL MANAGEMENT COMMITTEE (Y/N)	N
N-NO Y-YES T-TROUBLE		TYPE OF FLOW	PERMANENT	<u>WATER QUALITY</u>	
		WORKING (Y/N)	Y	SUFFICIENT QUANTITY (Y/N)	Y
		STATE OF THE WATER POINT	GOOD	QUALITY OF WATER (iii)	T
		INVOLUNTARY MOVE (Y/N)	N	WATER RELATED DISEASES (Y/N)	Y

5.5.5 MARKET

5.5.5.1 MAIN MARKET

<u>STATE OF MAIN MARKET, BATEKA</u>							
<u>Typing Date:</u> 19/03/2015		<u>REGION:</u> S.W.R			<u>COUNCIL:</u> ISANGELE		
		<u>DIVISION:</u> NDIAN			<u>Sub-division:</u> ISANGELE		
VILLAGE/NEIGHBOURHOOD: BATEKA							
POPULATION							
<u>GEOGRAPHICAL COORDINATES</u>							
X:008.7820							
Y:04.6783							
Z:34m							
<u>NAME OF EQUIPMENT</u>		<u>CHARACTERISTICS OF PIECE OF WORK</u>		<u>EXISTING EQUIPMENT</u>		<u>EXISTING PLANNING</u>	
TYPE OF INFRASTRUCTURE	MARKET	CAPACITY	300PERSONS	BAR	0	WATER POINT	N
		FREQUENCY	WEEKLY	SHOP	05	LATRINE	Y
<u>REALISATION</u>		OPENING DAY	TUESDAY	SHED	44	WASTE MANAGEMENT FACILITY	N
ENTERPRISE	STEELCAM ENTERPRISE	PRESENT STATE	G	BUTCHER'S SHOP	0	RE-AFFORESTATION	Y
SOURCE OF FINANCE	RUMPI& ISANGELE COUNCIL	<u>MANAGEMENT OF CENTRE</u>		FISHSHOP	0	ELECTRICITY	N
CONSTRUCTION YEAR	2010	MANAGEMENT MODE	N	COLD STORE	1	ACCESS RAM FOR THE HADICAPPED	N
INVOLUNTARY MOVE	N	EXISTENCE OF MANAGEMENT COMMITTEE		FENCE	N	OFFICE	N
		EXISTENCE OF MANAGEMENT COMMITTEE	N	OTHERS	0	OTHERS	
		MONTHLY GAINS : NIL					
NB: - THERE IS A COLD STORE BUT IT IS NONFUNCTIONAL							

STATE OF BEACH MARKET, ORON							
Typing Date:19/03/2015			REGION:S.W.R		COUNCIL: ISANGELE		
			DIVISION:NDIAN		Sub-division: ISANGELE		
VILLAGE/NEIGHBOURHOOD: ORON							
POPULATION							
GEOGRAPHICAL COORDINATES							
X:008.6804							
Y:04.7738							
Z:13m							
NAME OF EQUIPMENT		CHARACTERISTICS OF PIECE OF WORK		EXISTING EQUIPMENT		EXISTING PLANNING	
TYPE OF INFRASTRUCTURE	MARKET	CAPACITY	100persons	BAR	N	WATER POINT	N
		FREQUENCY	NIL	SHOP	N	LATRINE	N
REALISATION	2014	OPENING DAY	NIL	SHED	24	WASTE MANAGEMENT FACILITY	N
ENTERPRISE	CHULI GLOBAL ENTERPRISE	PRESENT STATE	GOOD	BUTCHER'S SHOP	N	RE-AFFORESTATION	N
SOURCE OF FINANCE	PIB	MANAGEMENT OF CENTRE		FISHSHOP	N	ELECTRICITY	N
CONSTRUCTION YEAR	2014	MANAGEMENT MODE		COLD STORE	N	ACCESS RAM FOR THE HADICAPPED	N
INVOLUNTARY MOVE	N	EXISTENCE OF MANAGEMENT COMMITTEE		FENCE	N	OFFICE	N
		MONTHLY GAINS		OTHERS	OTHERS		
		MANAGEMENT OF CENTRE			N		
		MANAGEMENT MODE					
		EXISTENCE OF MANAGEMENT COMMITTEE			N		
		MONTHLY GAINS			NIL		

5.5.6 EMPLOYMENT AND VOCATIONAL TRAINING

5.5.6.1 WOMEN EMPOWERMENT CENTRE

STATE OF WOMEN EMPOWERMENT AND THE FAMILY CENTRE					
<u>TYPING DATE:</u> 18/03/2015		<u>REGION:</u> S.W.R		<u>COUNCIL:</u> ISANGELE	
		<u>DIVISION:</u> NDIAN		<u>Sub-division:</u> ISANGELE	
<u>VILLAGE/NEIGHBOURHOOD:</u> AMOTO					
<u>POPULATION (a):</u>					
<u>NAME OF STRUCTURE:</u> WOMEN EMPOWERMENT AND THE FAMILY CENTRE.					
<u>TYPE OF INFRASTRUCTURE:</u> MULTIFUNCTIONAL CENTRE.					
<u>GEOGRAPHICAL COORDINATES</u>					
X: 008.6744					
Y: 04.7780					
Z: 35m					
<u>REALISATION</u>		<u>CHARACTERISTICS</u>		<u>PLANNING (Y/N)</u>	
<u>ENTERPRISE:</u>	DAP INCORPORATED	<u>ACCOMODATION CAPACITY:</u>	300	<u>WATER POINT:</u>	N
<u>SOURCE OF FINANCING:</u>	PIB	<u>NO. OF BUILDINGS:</u>	04	<u>LATRINE:</u>	Y
<u>CONSTRUCTION YEAR:</u>	2011	<u>NO. OF ROOMS:</u>	06	<u>REAFFORESTATION:</u>	
<u>INVOLUNTARY MOVE (Y/N):</u>	Y	<u>ACTIVITIES:</u>	SEWING, CATERING, HAIR DRESSING, COMPUTER, HOME MANAGEMENT, ART & CRAFT, AGRO PASTORAL.	<u>FENCE:</u>	N
	<u>EQUIPEMENT</u>			<u>WASTE MANAGEMENT FACILITY:</u>	N
	<u>SEWING MACHINES:</u>	04		<u>ELECTRIFICATION:</u>	N
	<u>FURNITURE:</u>	37		<u>PLAY GROUNDS:</u>	
	<u>BEDS:</u>	0		<u>CENTRE MANAGEMENT</u>	
	<u>COMPUTERS:</u>	0		<u>EXISTENCE OF Mgt. COMMITTEE (Y/N):</u>	N
	<u>PHOTOCOPYING MACHINE:</u>	0		<u>SEMESTER RECEIPTS:</u>	N
	<u>OTHERS:</u>	GENSET, FRIDGE, KITCHEN UTENSILS, ETC.		<u>NUMBER OF PERSONS:</u>	0

5.5.6.2 SAR/SM

<u>STATE OF SAR/SM</u>						
TYPING DATE: 18/03/2015			REGION: S.W.R		COUNCIL: ISANGELE	
			DIVISION: NDIAN		Sub-division: ISANGELE	
VILLAGE/LOCALITY: BATEKA						
SCHOOL NAME: Government Rural and Artisan Centre (SAR/SM) Isangele.						
<u>GEOGRAPHICAL COORDINATES</u>						
X: 008.6776						
Y: 04.7857						
Z: 34m						
<u>STATUS OF SCHOOL(i)</u>	<u>LEVEL(ii)</u>	<u>TOTAL NO. OF PUPILS</u>		<u>NO. & EQUIPMENT OF CLASSROOMS</u>		<u>PLANNING (Y/N)</u>
✓ PUB	0	GIRLS:	0	DESKS: 67	WATER POINT:	Y
PRI	1					
EPA	2					
CREATION YEAR: 2009	3	BOYS:	0	NON-PERMANENT MATERIAL	LATRINES:	N
	✓ 4					
REALISATION YEAR: 2009	5	TOTAL	0	POLES: NIL	BIN:	N
	6					
SOURCE OF FINANCE: PIB	7	<u>TOTAL NO. OF TEACHERS</u>		PLANKS: NIL	RE-AFFORESTATION:	N
	OTHERS:					
Y-YES N-NO		PTA:	0	SEMI-PERMANENT (Table, Chair, etc.): 17	FENCE:	N
		CONTRACT:	01	<u>GENERAL STATE OF CONCRETE BUILDINGS</u>	TEACHERS RESIDENCE:	N
		CIVIL SERVANTS:	01		OTHERS (fridge, gas cooker, genset, wheelbarrow, spade):	Y
		PUPIL/TEACHER RATIO:	0:1	GOOD:		
		PUPIL/CLASS RATIO:	0:3	FAIR:	✓	
		PUPIL/SEAT RATIO:	0:67	BAD:		
NB: - WATER POINT (A DRILLED WELL WITH MANUAL HAND PUMP) BUT HAS DRIED OUT.						

5.5.7. ROAD NETWORK

STATE OF ROAD NETWORK						
<u>TYPING DATE:</u> 19/03/2015		<u>REGION:</u> S.W.R		<u>COUNCIL:</u> ISANGELE		
		<u>DIVISION:</u> NDIAN		<u>Sub-division:</u> ISANGELE		
<u>VILLAGE/NEIGHBOURHOOD</u>						
MAINLAND ISANGELE MUNICIPALITY						
<u>POPULATION (a)</u>						
29,275						
NAME OF SECTION:	CARRIAGE WAY	<u>VILLAGES CROSSED</u>			<u>PIECE OF WORK</u>	
<u>REALISATION</u>		<ul style="list-style-type: none"> - IDIBANYANGA - BATEKA - AMOTO 			<ul style="list-style-type: none"> - GRADING - LATERIZATION - DRAINAGE 	
ENTERPRISE (S):	GENIE MILITAIRE					
SOURCE OF FINANCING	PIB					
REALISATION YEAR	2010					
INVOLUNTARY MOVE (Y/N)	Y					
<u>CHARACTERISTICS OF PIECE OF WORK</u>						
TYPE OF WORKS (i)	MAINTENANCE					
LENGTH OF ROAD (km):	14 km					
STATE OF SECTION (ii)	P					
EXISTENCE OF MANAGEMENT COMMITTEE	N					

5.5.7 NATURAL RESOURCES

<u>STATE OF NATURAL RESOURCE, ALABITA</u>				
Typing Date: 18/03/2015		REGION: S.W.R		COUNCIL: ISANGELE
		DIVISION: NDIAN		Sub-division: ISANGELE
NAME OF ZONE		ALABITA		
<u>GEOGRAPHICAL COORDINATES</u>				
X: 008.7004				
Y: 04.7135				
Z: 5m				
TYPE OF ZONE:	MARITIME	NUMBER OF EXPLOITERS	NIL	<u>TYPE OF NATURAL RESOURCES</u>
SURFACE AREA:	600 ha	EXISTENCE OF CONFLICT	NIL	MANGROVE FOREST (FLORA & FAUNA), SAND, CREEKS
DELIMITATION:	Y			
PV NEGOCIATION:	N			

<u>STATE OF NATURAL RESOURCES TINKORO</u>				
Typing Date: 18/03/2015		REGION: S.W.R		COUNCIL: ISANGELE
		DIVISION: NDIAN		Sub-division: ISANGELE
NAME OF ZONE		TINKORO		
<u>GEOGRAPHICAL COORDINATES</u>				
X: 008.7014				
Y: 04.7058				
Z: 8m				
TYPE OF ZONE:	MARITIME	NUMBER OF EXPLOITERS	NIL	<u>TYPE OF NATURAL RESOURCES</u>
SURFACE AREA:	1000 ha	EXISTENCE OF CONFLICT	NIL	MANGROVE FOREST (FLORA & FAUNA), SAND, CREEKS
DELIMITATION:	Y			
PV NEGOCIATION:	N			

<u>STATE OF NATURAL RESOURCES AMOTO</u>				
Typing Date: 18/03/2015		REGION: S.W.R		COUNCIL: ISANGELE
		DIVISION: NDIAN		Sub-division: ISANGELE
NAME OF ZONE		AMOTO		
<u>GEOGRAPHICAL COORDINATES</u>				
X: 008.6780				
Y: 04.7750				
Z: 2m				
TYPE OF ZONE:	MARITIME& MAINLAND	NUMBER OF EXPLOITERS	NIL	<u>TYPE OF NATURAL RESOURCES</u>
SURFACE AREA:	1400 ha	EXISTENCE OF CONFLICT	NIL	MANGROVE FOREST (FLORA & FAUNA), FOREST,FOREST, SAND, CREEKS
DELIMITATION:	Y			
PV	N			
NEGOCIATION:				

<u>STATE OF NATURAL RESOURCES DIBONDORIKPA</u>				
Typing Date: 18/03/2015		REGION: S.W.R		COUNCIL: ISANGELE
		DIVISION: NDIAN		Sub-division: ISANGELE
NAME OF ZONE		DIBONDORIKPA		
<u>GEOGRAPHICAL COORDINATES</u>				
X: 008.2202				
Y: 04.7650				
Z: 4m				
TYPE OF ZONE:	MARITIME	NUMBER OF EXPLOITERS	NIL	<u>TYPE OF NATURAL RESOURCES</u>
SURFACE AREA:	600 ha	EXISTENCE OF CONFLICT	NIL	MANGROVE FOREST (FLORA & FAUNA), SAND, CREEKS
DELIMITATION:	Y			
PV	N			
NEGOCIATION:				

<u>STATE OF NATURAL RESOURCES, EKUMAMINDO</u>				
Typing Date: 18/03/2015		REGION: S.W.R		COUNCIL: ISANGELE
		DIVISION: NDIAN		Sub-division: ISANGELE
NAME OF ZONE		EKUMAMENDO		
<u>GEOGRAPHICAL COORDINATES</u>				
X: 008.7202				
Y: 04.7350				
Z: 5m				
TYPE OF ZONE:	MARITIME	NUMBER OF EXPLOITERS	NIL	<u>TYPE OF NATURAL RESOURCES</u>
SURFACE AREA:	500 ha	EXISTENCE OF CONFLICT	NIL	MANGROVE FOREST (FLORA & FAUNA), SAND, CREEKS
DELIMITATION:	Y			
PV NEGOCIATION:	N			

<u>STATE OF NATURAL RESOURCE, ISO-OBO</u>				
Typing Date: 18/03/2015		REGION: S.W.R		COUNCIL: ISANGELE
		DIVISION: NDIAN		Sub-division: ISANGELE
NAME OF ZONE		ISO-OBO		
<u>GEOGRAPHICAL COORDINATES</u>				
X: 008.7012				
Y: 04.8534				
Z: 6m				
TYPE OF ZONE:	MARITIME	NUMBER OF EXPLOITERS	NIL	<u>TYPE OF NATURAL RESOURCES</u>
SURFACE AREA:	700 ha	EXISTENCE OF CONFLICT	NIL	MANGROVE FOREST (FLORA & FAUNA), SAND, CREEKS
DELIMITATION:	Y			
PV NEGOCIATION:	N			

<u>STATE OF NATURAL RESOURCE, OKONAMA</u>				
Typing Date: 18/03/2015		REGION: S.W.R		COUNCIL: ISANGELE
		DIVISION: NDIAN		Sub-division: ISANGELE
NAME OF ZONE: OKONAMA				
<u>GEOGRAPHICAL COORDINATES</u>				
X: 008.7426				
Y: 04.8072				
Z: 7m				
TYPE OF ZONE:	MARITIME	NUMBER OF EXPLOITERS	NIL	<u>TYPE OF NATURAL RESOURCES</u>
SURFACE AREA:	700 ha	EXISTENCE OF CONFLICT	NIL	MANGROVE ,FOREST (FLORA & FAUNA), SAND, CREEKS
DELIMITATION:	Y			
PV NEGOCIATION:	N			

<u>STATE OF NATURAL RESOURCE, BATEKA</u>				
Typing Date: 18/03/2015		REGION: S.W.R		COUNCIL: ISANGELE
		DIVISION: NDIAN		Sub-division: ISANGELE
NAME OF ZONE		BATEKA		
<u>GEOGRAPHICAL COORDINATES</u>				
X: 008.6828				
Y: 04.7775				
Z: 15m				
TYPE OF ZONE:	MARITIME& MAINLAND	NUMBER OF EXPLOITERS	NIL	<u>TYPE OF NATURAL RESOURCES</u>
SURFACE AREA:	1500 ha	EXISTENCE OF CONFLICT	NIL	MANGROVE FOREST (FLORA & FAUNA), SAND, FOREST, CREEKS
DELIMITATION:	Y			
PV NEGOCIATION:	N			

<u>STATE OF NATURAL RESOURCE, OPOPO</u>				
Typing Date: 18/03/2015		REGION: S.W.R		COUNCIL: ISANGELE
		DIVISION: NDIAN		Sub-division: ISANGELE
NAME OF ZONE: OPOPO				
<u>GEOGRAPHICAL COORDINATES</u>				
X: 008.6463				
Y: 04.6734				
Z: 3m				
TYPE OF ZONE:	MARITIME	NUMBER OF EXPLOITERS	NIL	<u>TYPE OF NATURAL RESOURCES</u>
SURFACE AREA:	1000 ha	EXISTENCE OF CONFLICT	NIL	MANGROVE FOREST (FLORA & FAUNA), SAND, CREEKS
DELIMITATION:	Y			
PV NEGOCIATION:	N			

<u>STATE OF NATURAL RESOURCE, MASSAKA</u>				
Typing Date: 18/03/2015		REGION: S.W.R		COUNCIL: ISANGELE
		DIVISION: NDIAN		Sub-division: ISANGELE
NAME OF ZONE: MASSAKA				
<u>GEOGRAPHICAL COORDINATES</u>				
X: 008.7497				
Y: 04.8380				
Z: 3m				
TYPE OF ZONE:	MARITIME	NUMBER OF EXPLOITERS	NIL	<u>TYPE OF NATURAL RESOURCES</u>
SURFACE AREA:	800 ha	EXISTENCE OF CONFLICT	NIL	MANGROVE ,FOREST (FLORA & FAUNA), SAND, CREEKS
DELIMITATION:	Y			
PV NEGOCIATION:	N			

<u>STATE OF NATURAL RESOURCE, ORON</u>				
Typing Date: 18/03/2015		REGION: S.W.R		COUNCIL: ISANGELE
		DIVISION: NDIAN		Sub-division: ISANGELE
NAME OF ZONE: ORON				
<u>GEOGRAPHICAL COORDINATES</u>				
X: 008.6819				
Y: 04.7743				
Z: 27m				
TYPE OF ZONE:	MARITIME	NUMBER OF EXPLOITERS	NIL	<u>TYPE OF NATURAL RESOURCES</u>
SURFACE AREA:	1200 ha	EXISTENCE OF CONFLICT	NIL	MANGROVE FOREST (FLORA & FAUNA), SAND, FOREST, CREEKS
DELIMITATION:	Y			
PV NEGOCIATION:	N			

<u>STATE OF NATURAL RESOURCE, IDIBANYANGA</u>				
Typing Date: 18/03/2015		REGION: S.W.R		COUNCIL: ISANGELE
		DIVISION: NDIAN		Sub-division: ISANGELE
NAME OF ZONE: IDIBANYANGA				
<u>GEOGRAPHICAL COORDINATES</u>				
X: 008.7017				
Y: 04.8589				
Z: 46m				
TYPE OF ZONE:	MARITIME	NUMBER OF EXPLOITERS	NIL	<u>TYPE OF NATURAL RESOURCES</u>
SURFACE AREA:	1700 ha	EXISTENCE OF CONFLICT	NIL	MANGROVE ,FOREST (FLORA & FAUNA), SAND, FOREST, CREEKS
DELIMITATION:	Y			
PV NEGOCIATION:	N			

<u>STATE OF NATURAL RESOURCE, RIO-DEY-REY</u>				
Typing Date: 18/03/2015		REGION: S.W.R		COUNCIL: ISANGELE
		DIVISION: NDIAN		Sub-division: ISANGELE
NAME OF ZONE: RIO-DEL-REY				
<u>GEOGRAPHICAL COORDINATES</u>				
X: 008.6358				
Y: 04.7079				
Z: 4m				
TYPE OF ZONE:	MARITIME	NUMBER OF EXPLOITERS	NIL	<u>TYPE OF NATURAL RESOURCES</u>
SURFACE AREA:	1500 ha	EXISTENCE OF CONFLICT	NIL	MANGROVE ,FOREST (FLORA & FAUNA), SAND, CREEKS
DELIMITATION:	Y			
PV NEGOCIATION:	N			

<u>STATE OF NATURAL RESOURCE, ATINOK</u>				
Typing Date: 18/03/2015		REGION: S.W.R		COUNCIL: ISANGELE
		DIVISION: NDIAN		Sub-division: ISANGELE
NAME OF ZONE: ATINOK				
<u>GEOGRAPHICAL COORDINATES</u>				
X: 008.6327				
Y: 04.6486				
Z: 4m				
TYPE OF ZONE:	MARITIME	NUMBER OF EXPLOITERS	NIL	<u>TYPE OF NATURAL RESOURCES</u>
SURFACE AREA:	1500 ha	EXISTENCE OF CONFLICT	NIL	MANGROVE ,FOREST (FLORA & FAUNA), SAND, CREEKS
DELIMITATION:	Y			
PV NEGOCIATION:	N			

5.6Land Use plan

1. Residential
2. Administrative quarters
3. Social infrastructures
4. Natural resources
5. Farmlands
6. Collective projects
7. Forests

5.6Land Use plan

8. Residential
9. Administrative quarters
10. Social infrastructures
11. Natural resources
12. Farmlands
13. Collective projects
14. Forests
15. Protected areas

S/N	Resource	Potentials	problems	Tendencies	MANAGEMENT
1.	Village settlements		Functional		Chiefs and Traditional Councils
2.	Farm lands		Functional		Local populations
3.	Roads		Service not provided		State, Council and communities
4.	Forest concessions		Non existent		Management committees
5.	Council forests		Non existent		Management committee
6.	Community forests		Non existent		Management committee
7.	Protected areas		Non existent		State
8.	Mixed forests		Non existent		State, local populations
9.	Shrines and sacred sites		Functional		Chiefs
10.	Administrative buildings and offices		Functional		Sector heads
11.	Social infrastructure [Electricity, water system]		Non functional		Council
12.	Beaches		Functional		Population

6. PROGRAMMING

The method used in conducting the strategic programming consisted of initially determining:

6.1 Relatively constant resources [ref CID]

1. Type of resources needed i.e. human, material and financial
2. Level of mobilization i.e. municipality and external levels and finally
3. Strategy of the mobilization of the concerned key stakeholders and key actors of mobilization who include state representatives, sector heads, technical and financial partners, technicians, political and traditional authorities and the general population.

6.2 Variable resources within 3 years.

The possible sources of financing and the mechanisms for their mobilization is shown in the table below:

Table 3: Resources

TYPE	Community	External Resources		Strategy of mobilization
Human Resources	Local populations	<i>Nationals outside the municipality</i>	<i>Populations abroad</i>	Identification of individuals and groups actors and groups that can be used. A training plan [training themes, targeted public Expected results; Duration; Budget
	Council workers	NGOs	NGOs	
	Community groups and associations	Contractors		
	Skilful individuals	The Army		
	State representatives, Sector heads, technical and Financial partners Technicians Political and traditional authorities	State representatives, Sector heads, technical and Financial partners Technicians Political authorities	technical and Financial partners Technicians	

Financial Resources	Taxes and tax related resources Council generated revenue	PIB State subventions FEICOM PNDP SOWEDA and RUMPI CAC; Other taxes	Decentralized cooperation Foreign assistance	Initiate moves to access probable grants, subventions and credits Information and sensitization of Local populations on the importance of their contributions Tax recovery.
Material Resources	Office equipment and materials	Equipment and office materials	Equipment and office materials	Identification of individuals and groups actors and groups that can be used..

6.3 MIDTERM EXPENDITURE FRAMEWORK (MITEF) IN ORDER OF RIORITY

6.3.1 ELECTRICITY

<u>MIDTERM EXPENDITURE FRAMEWORK</u>						
Typing Date:19/03/2015		REGION:S.W.R		COUNCIL:ISANGELE		
		DIVISION: NDIAN		Sub-division: ISANGELE		
BUDGET EXERCISE:		2015-2017		<u>FORCASTED REALISATION YEAR</u> 2017		
PERIODICITY:		3 YEARS				
SECTOR:		ELECRCITY				
LOCALITY:		ISANGELE MUNICIPALITY				
<u>GEOGRAPHICAL COORDINATES</u>						
X: 008.6780						
Y: 04.7772						
Z: 32m						
<u>DESCRIPTION OF PROJECTS</u>						
PROJECTS	LOCALITIES	YEAR I (2015)	YEAR II (2016)	YEAR III (2017)	SOURCE OF FINANCE	AMOUNT (FCFA)
INSTALLATION OF A THERMAL PLAN	ISANGELE URBAN	✓			PIB, PNDP	500.000.000
INSTALLATION OF SOLAR LIGHTING	MASSAKA		✓		PIB, OTHERS.	20.000.000
INSTALLATION OF SOLAR LIGHTING	OKONAMA		✓		PIB, OTHERS	50.000.000
INSTALLATION OF SOLAR LIGHTING	DIBONDORIK PA			✓	PIB, OTHERS	50.000.000
INSTALLATION OF SOLAR LIGHTING	TINKORO			✓	PIB, OTHERS	50.000.000
INSTALLATION OF SOLAR LIGHTING	OPOPO			✓	PIB, OTHERS	30.000.000
INSTALLATION OF SOLAR LIGHTING	ALABITA			✓	PIB, OTHERS	20.000.000
INSTALLATION OF SOLAR LIGHTING	ATINOK		✓		PIB, OTHERS	20.000.000
INSTALLATION OF SOLAR LIGHTING	RIO-DE-REY			✓	PIB, OTHERS	20.000.000
INSTALLATION OF SOLAR LIGHTING	EKUMAMIND O		✓		PIB, OTHERS	20.000.000
INSTALLATION OF SOLAR LIGHTING	IDIBANYANG A		✓		PIB, OTHERS	80.000.000
NO. OF PROJECTS YEARLY		01	05	05		
TOTAL NO. OF PROJECTS		11				
TOTALS:		500.000.0 00	210.000.000	170.000. 000		
GRAND TOTAL		<u>880.000.000 FCFA</u>				

6.3.2 WATER

MIDTERM EXPENDITURE FRAMEWORK						
Typing Date:19/03/2015		REGION:S.W.R		COUNCIL:ISANGELE		
		DIVISION: NDIAN		Sub-division: ISANGELE		
BUDGET EXERCISE:		2015-2017		FORCASTED REALISATION YEAR 2017		
PERIODICITY:		3 YEARS				
SECTOR:		WATER				
LOCALITY:		ISANGELE MUNICIPALITY				
GEOGRAPHICAL COORDINATES						
X: 008.6780						
Y: 04.7772						
Z: 32m						
DESCRIPTION OF PROJECTS						
PROJECTS	LOCALITIES	YEAR I (2015)	YEAR II (2016)	YEAR III (2017)	SOURCE OF FINANCE	AMOUNT (FCFA)
CONSTRUCTION OF A WATER CATCHMENT	ISANGELE URBAN SPACE	✓			PIB, OTHERS	260.000.000
DRILLED WELL	MASSAKA	✓			PIB, OTHERS	15.000.000
DRILLED WELL	OKONAMA		✓		PIB, OTHERS	15.000.000
DRILLED WELL	DIBONDORIK PA	✓			PIB, OTHERS	15.000.000
DRILLED WELL	ISO-OBO	✓			PIB, OTHERS	15.000.000
DRILLED WELL	ATINOK			✓	PIB, OTHERS	15.000.000
DRILLED WELL	ALABITA			✓	PIB, OTHERS	15.000.000
DRILLED WELL	TINKORO		✓		PIB, OTHERS	15.000.000
DRILLED WELL	RIO-DEL-REY		✓		PIB, OTHERS	15.000.000
DRILLED WELL	IDIBANYANG A	✓			PIB, OTHERS	15.000.000
DRILLED WELL	OPOPO		✓		PIB, OTHERS	15.000.000
NO. OF PROJECTS YEARLY		4	4	2		
TOTAL NO. OF PROJECTS		10				
TOTALS:		320.000.000	60.000.000	30.000.000		
GRAND TOTAL		<u>410.000.000 FCFA</u>				

6.3.3 SECONDARY EDUCATION

<u>MIDTERM EXPENDITURE FRAMEWORK</u>						
Typing Date:19/03/2015		REGION:S.W.R		COUNCIL:ISANGELE		
		DIVISION: NDIAN		Sub-division: ISANGELE		
BUDGET EXERCISE:		2015-2017		FORCASTED REALISATION YEAR 2017		
PERIODICITY:		3 YEARS				
SECTOR:		SECONDARY EDUCATION				
LOCALITY:		ISANGELE MUNICIPALITY				
<u>GEOGRAPHICAL COORDINATES</u>						
X: 008.6780						
Y: 04.7772						
Z: 32m						
<u>DESCRIPTION OF PROJECTS</u>						
PROJECTS	LOCALITIES	YEAR I (2015)	YEAR II (2016)	YEAR III (2017)	SOURCE OF FINANCE	AMOUNT (FCFA)
COMPUTER LABORATORY	G.B.H.S ISANGELE - BATEKA	✓			PIB, OTHERS	25.000.000
SCIENCE LABORATORY (CONSTRUCTIO N & EQUIPMENT)	G.B.H.S ISANGELE - BATEKA			✓	PIB, OTHERS	70.000.000
CONSTRUCTION OF ADMINISTRATIV E BLOCK	G.B.H.S ISANGELE - BATEKA		✓		PIB, OTHERS	45.000.000
RECRUITMENT OF TEACHERS	G.B.H.S ISANGELE - BATEKA	✓			PIB	4.000.000
NO OF PROJECTS YEARLY		2	1	1		
TOTAL NO. OF PROJECTS		04				
TOTALS:		29.000.00 0	45.000.000	70.000.0 00		
GRAND TOTAL		<u>144.000.000 FCFA</u>				

6.3.4 HEALTH

<u>MIDTERM EXPENDITURE FRAMEWORK</u>						
Typing Date:19/03/2015		REGION:S.W.R		COUNCIL:ISANGELE		
		DIVISION: NDIAN		Sub-division: ISANGELE		
BUDGET EXERCISE:		2015-2017		FORCASTED REALISATION YEAR		
PERIODICITY:		3 YEARS				
SECTOR:		HEALTH				
LOCALITY:		ISANGELE MUNICIPALITY		2017		
<u>GEOGRAPHICAL COORDINATES</u>						
X: 008.6780						
Y: 04.7772						
Z: 32m						
<u>DESCRIPTION OF PROJECTS</u>						
PROJECTS	LOCALITIES	YEAR I (2015)	YEAR II (2016)	YEAR III (2017)	SOURCE OF FINANCE	AMOUNT (FCFA)
ACQUISITION OF HOSPITAL BEDS	ISANGELE URBAN	✓			PIB, PNDP	4.000.000
HEALTH POST	MASSAKA		✓		PIB, OTHERS.	60.000.000
HEALTH POST	OKONAMA		✓		PIB, OTHERS	60.000.000
HEALTH POST	DIBONDORIK PA			✓	PIB, OTHERS	60.000.000
HEALTH POST	TINKORO			✓	PIB, OTHERS	60.000.000
HEALTH POST	OPOPO			✓	PIB, OTHERS	60.000.000
HEALTH POST	ALABITA			✓	PIB, OTHERS	60.000.000
HEALTH POST	ATINOK		✓		PIB, OTHERS	60.000.000
HEALTH POST	RIO-DE-REY			✓	PIB, OTHERS	60.000.000
HEALTH POST	EKUMAMIND O		✓		PIB, OTHERS	60.000.000
HEALTH POST	IDIBANYANG A		✓		PIB, OTHERS	60.000.000
NO. OF PROJECTS YEARLY		1	5	5		
TOTAL NO. OF PROJECTS		11				
TOTALS:		4.000.000	300.000.000	300.000. 000		
GRAND TOTAL		<u>604.000.000 FCFA</u>				

6.3.5 BASIC EDUCATION

<u>MIDTERM EXPENDITURE FRAMEWORK</u>						
Typing Date:19/03/2015		REGION:S.W.R		COUNCIL:ISANGELE		
		DIVISION: NDIAN		Sub-division: ISANGELE		
BUDGET EXERCISE:		2015-2017		FORCASTED REALISATION YEAR		
PERIODICITY:		3 YEARS				
SECTOR:		BASIC EDUCATION				
LOCALITY:		ISANGELE MUNICIPALITY		2017		
<u>GEOGRAPHICAL COORDINATES</u>						
X: 008.6780						
Y: 04.7772						
Z: 32m						
<u>DESCRIPTION OF PROJECTS</u>						
PROJECTS	LOCALITIES	YEAR I (2015)	YEAR II (2016)	YEAR III (2017)	SOURCE OF FINANCE	AMOUNT (FCFA)
COMPUTER LABORATORY	G.S ISANGELE -BATEKA	✓			PIB, OTHERS	25.000.000
RECRUITMENT OF TEACHERS	MASSAKA	✓			PIB	2.340.000
CONSTRUCTION OF 2 CLASSROOM	OKONAMA			✓	PIB, OTHERS	23.000.000
CONSTRUCTION OF 2 CLASSROOM	DIBONDORIK PA	✓			PIB, OTHERS	23.000.000
CONSTRUCTION OF 2 CLASSROOM	TINKORO		✓		PIB, OTHERS	23.000.000
CONSTRUCTION OF 2 CLASSROOM	OPOPO			✓	PIB, OTHERS	23.000.000
RECRUITMENT OF TEACHERS	ISO-OBO	✓			PIB	2.340.000
CONSTRUCTION OF 2 CLASSROOM	ATINOK	✓			PIB	23.000.000
CONSTRUCTION OF 2 CLASSROOM	RIO-DE-REY		✓		PIB, OTHERS	23.000.000
CONSTRUCTION OF 2 CLASSROOM	EKUMAMIND O			✓	PIB, OTHERS	23.000.000
RECRUITMENT OF TEACHERS	IDIBANYANG A	✓			PIB	2.340.000
CONSTRUCTION OF A STAFF RESIDENCE	G.S ISANGELE -BATEKA	✓			PIB, OTHERS	14.500.000
NO. OF PROJECTS YEARLY		2	2	3		
TOTAL NO. OF PROJECTS		07				
TOTALS:		92.520.00 0	46.000.000	69.000.0 00		
GRAND TOTAL		<u>207.520.000 FCFA</u>				

6.3.7 TRANSPORTATION

<u>MIDTERM EXPENDITURE FRAMEWORK</u>						
Typing Date:19/03/2015		REGION:S.W.R		COUNCIL:ISANGELE		
		DIVISION: NDIAN		Sub-division: ISANGELE		
BUDGET EXERCISE:		2015-2017		FORCASTED REALISATION YEAR		
PERIODICITY:		3 YEARS				
SECTOR:		TRANSPORTATION				
LOCALITY:		ISANGELE MUNICIPALITY		2017		
<u>GEOGRAPHICAL COORDINATES</u>						
X: 008.6780						
Y: 04.7772						
Z: 32m						
<u>DESCRIPTION OF PROJECTS</u>						
PROJECTS	LOCALITIES	YEAR I (2015)	YEAR II (2016)	YEAR III (2017)	SOURCE OF FINANCE	AMOUNT (FCFA)
AQUISITION OF A TRANSPORT SEA BUS	ISANGELE URBAN SPACE	✓	-	-	PIB, OTHERS	250.000.000
NO. OF YEARLY	PROJECTS	01	00	00		
TOTAL NO. OF PROJECTS		01				
TOTALS		250.000. 000	00	00		
GRAND TOTAL		<u>250.000.000CFCFA</u>				

6.3.8 AGRICULTURE

<u>MIDTERM EXPENDITURE FRAMEWORK</u>						
Typing Date:19/03/2015		REGION:S.W.R		COUNCIL:ISANGELE		
		DIVISION: NDIAN		Sub-division :ISANGELE		
BUDGET EXERCISE:		2015-2017		<u>FORCASTED REALISATION YEAR</u> 2017		
PERIODICITY:		3 YEARS				
SECTOR:		AGRICULTURE				
LOCALITY:		ISANGELE MUNICIPALITY				
<u>GEOGRAPHICAL COORDINATES</u>						
X: 008.6780						
Y: 04.7772						
Z: 32m						
<u>DESCRIPTION OF PROJECTS</u>						
PROJECTS	LOCALITIES	YEAR I (2015)	YEAR II (2016)	YEAR III (2017)	SOURCE OF FINANCE	AMOUNT (FCFA)
SUPPLY OF FARMING TOOLS AND CHIMICAL TO FARMERS AND IMPROVED CASSAVA CUTTINGS	ISANGELE URBAN	✓	✓	✓	PIB, OTHERS	1.500.000
SUPPLY OF FARMING TOOLS AND CHIMICAL TO FARMERS AND IMPROVED CASSAVA CUTTINGS	MASSAKA	✓	✓	✓	PIB, OTHERS.	1.500.000
SUPPLY OF FARMING TOOLS AND CHIMICAL TO FARMERS AND IMPROVED CASSAVA CUTTINGS	OKONAMA	✓	✓	✓	PIB, OTHERS	1.500.000
SUPPLY OF FARMING TOOLS AND CHIMICAL TO FARMERS AND IMPROVED CASSAVA CUTTINGS	DIBONDORIK PA	✓	✓	✓	PIB, OTHERS	1.500.000
NO. OF PROJECTS YEARLY		4	4	4		
TOTAL NO. OF PROJECTS		12				
TOTALS:		2.000.000	2.000.000	2.000.000		
GRAND TOTAL		<u>6.000.000 FCFA</u>				

6.3.9 FISHERY

<u>MIDTERM EXPENDITURE FRAMEWORK</u>						
Typing Date:19/03/2015		REGION:S.W.R		COUNCIL:ISANGELE		
		DIVISION: NDIAN		Sub-division: ISANGELE		
BUDGET EXERCISE:		2015-2017		FORCASTED REALISATION YEAR		
PERIODICITY:		3 YEARS				
SECTOR:		FISHERY				
LOCALITY:		ISANGELE MUNICIPALITY		2017		
<u>GEOGRAPHICAL COORDINATES</u>						
X: 008.6780						
Y: 04.7772						
Z: 32m						
<u>DESCRIPTION OF PROJECTS</u>						
PROJECTS	LOCALITIES	YEAR I (2015)	YEAR II (2016)	YEAR III (2017)	SOURCE OF FINANCE	AMOUNT (FCFA)
CONSTRUCTION OF A FISH MARKET AT NEW BEACH	BATEKA	✓			PIB, PNDP	15.000.000
CONSTRUCTION OF A MODERN FISH POND	AMOTO	✓			PIB, OTHERS.	160.000.000
CONSTRUCTION OF A MODERN FISH OVEN	BATEKA		✓		PIB, OTHERS	2.500.000
CONSTRUCTION OF A MODERN FISH OVEN	AMOTO		✓		PIB, OTHERS	2.500.000
CONSTRUCTION OF A MODERN FISH OVEN	ORON		✓		PIB, OTHERS	2.500.000
CONSTRUCTION OF A MODERN FISH OVEN	OKONAMA			✓	PIB, OTHERS	2.500.000
CONSTRUCTION OF A MODERN FISH OVEN	DIBONDORIK PA			✓	PIB, OTHERS	2.500.000
TOTAL NO. OF PROJECTS		2	3	2		
TOTAL NO. OF PROJECTS		07				
TOTALS:		175.000.000	7.500.000	5.000.000		
GRAND TOTAL		<u>187.500.000 FCFA</u>				

6.3.10 URBAN DEVELOPMENT

<u>MIDTERM EXPENDITURE FRAMEWORK</u>						
Typing Date:19/03/2015		REGION:S.W.R		COUNCIL:ISANGELE		
		DIVISION: NDIAN		Sub-division: ISANGELE		
BUDGET EXERCISE:		2015-2017		<u>FORCASTED REALISATION YEAR</u> 2017		
PERIODICITY:		3 YEARS				
SECTOR:		URBAN DEVDPLOPMENT				
LOCALITY:		ISANGELE MUNICIPALITY				
<u>GEOGRAPHICAL COORDINATES</u>						
X: 008.6780						
Y: 04.7772						
Z: 32m						
<u>DESCRIPTION OF PROJECTS</u>						
PROJECTS	LOCALITIES	YEAR I (2015)	YEAR II (2016)	YEAR III (2017)	SOURCE OF FINANCE	AMOUNT (FCFA)
CONSTRUCTION OF THE ASSISTANT D.O'S RESIDENCE	ISANGELE URBAN SPACE	✓			PIB, OTHERS	25.000.000
RENOVATION OF THE D.O'S RESIDENCE	ISANGELE - BATEKA		✓		PIB, OTHERS	70.000.000
CONSTRUCTION OF LOW COST HOUSES	ISANGELE URBAN SPACE	✓			PIB, OTHERS	120.000.000
NO. OF PROJECTS YEARLY		02	01	00		
TOTAL NO. OF PROJECTS		03				
TOTALS:		145.000.0 00	70.000.000	00		
GRAND TOTAL		<u>299.500.000 FCFA</u>				

6.3.11 ENVIRONMENT

<u>MIDTERM EXPENDITURE FRAMEWORK</u>						
Typing Date:19/03/2015		REGION:S.W.R		COUNCIL:ISANGELE		
		DIVISION: NDIAN		Sub-division: ISANGELE		
BUDGET EXERCISE:		2015-2017		<u>FORCASTED REALISATION YEAR</u> 2017		
PERIODICITY:		3 YEARS				
SECTOR:		ENVIRONMENT				
LOCALITY:		ISANGELE MUNICIPALITY				
<u>GEOGRAPHICAL COORDINATES</u>						
X: 008.6780						
Y: 04.7772						
Z: 32m						
<u>DESCRIPTION OF PROJECTS</u>						
PROJECTS	LOCALITIES	YEAR I (2015)	YEAR II (2016)	YEAR III (2017)	SOURCE OF FINANCE	AMOUNT (FCFA)
TREE PLANTING	ISANGELE URBAN	✓	✓	✓	PIB, OTHERS	15.000.000
NO. OF PROJECTS YEARLY		1	1	1		
TOTAL NO. OF PROJECTS		03				
TOTALS:		5.000.000	5.000.000	5.000.00 0		
GRAND TOTAL		<u>15.000.000 FCFA</u>				

6.3.12 PUBLIC WORKS

<u>MIDTERM EXPENDITURE FRAMEWORK</u>		
Typing Date:19/03/2015	REGION:S.W.R	COUNCIL:ISANGELE
	DIVISION: NDIAN	Sub-division: ISANGELE
BUDGET EXERCISE:	2015-2017	FORCASTED REALISATION YEAR
PERIODICITY:	3 YEARS	
SECTOR:	PUBLIC WORKS	
LOCALITY:	ISANGELE MUNICIPALITY	2017
<u>GEOGRAPHICAL COORDINATES</u>		
X: 008.6780		
Y: 04.7772		
Z: 32m		

PROJECTS	LOCALITIES	YEAR I (2015)	YEAR II (2016)	YEAR III (2017)	SOURCE OF FINANCE	AMOUNT (FCFA)
DESCRIPTION OF PROJECTS						
COUNCIL ROAD MAINTENANCE	ISANGELE URBAN SPACE	✓	✓	✓	PIB	83.334.400
CONSTRUCTION OF BRIDGES OVER BIG & SMALL EKA- BUM STREAMS	ISANGELE URBAN SPACE - AMOTO	✓			PIB	90.000.000
CONSTRUCTION OF AN EMBANKMENT AT AKUM BEACH	ISANGELE URBAN SPACE - ORON		✓		PIB	275.000.000
NO. OF PROJECTS YEARLY		2	2	1		
TOTAL NO. OF PROJECTS		05				
TOTALS:		117.778.0 00	302.778.000	27.778.0 00		
GRAND TOTAL		448.334.000 FCFA				

6.3.13 WOMEN ENPOWERMENT AND THE FAMILY

<u>MIDTERM EXPENDITURE FRAMEWORK</u>						
Typing Date:19/03/2015		REGION:S.W.R		COUNCIL:ISANGELE		
		DIVISION: NDIAN		Sub-division:ISANGELE		
BUDGET EXERCISE:		2015-2017		<u>FORCASTED REALISATION YEAR</u> 2017		
PERIODICITY:		3 YEARS				
SECTOR:		WOMEN ENPOWERMENT AND THE FAMILY				
LOCALITY:		ISANGELE MUNICIPALITY				
<u>GEOGRAPHICAL COORDINATES</u>						
X: 008.6780						
Y: 04.7772						
Z: 32m						
<u>DESCRIPTION OF PROJECTS</u>						
PROJECTS	LOCALITIES	YEAR I (2015)	YEAR II (2016)	YEAR III (2017)	SOURCE OF FINANCE	AMOUNT (FCFA)
SUPLY OF SIX(6) SEWING MACHINES	ISANGELE URBAN	✓			PIB, PNDP	4.000.000
SUPLY OF SIX(6) COMPUTERS		✓			PIB, OTHERS.	6.000.000
SUPLY OF ONE(1) PHOTOCOPIER		✓			PIB, OTHERS	5.000.000
SUPLY OF TWO(2) FRIDGES		✓	✓		PIB, OTHERS	2.000.000
SUPLY OF FOUR(4) BEDS		✓			PIB, OTHERS	3.000.000
SUPLY OF KICHEN EQUIPMENTS		✓			PIB, OTHERS	2.000.000
NO. OF PROJECTS YEARLY		06	01	00		
TOTAL NO. OF PROJECTS		07				
TOTALS:		21.000.00 0	1.000.000	00		
GRAND TOTAL		<u>22.000.000 FCFA</u>				

6.3.14 SOCIAL AFFAIRS

<u>MIDTERM EXPENDITURE FRAMEWORK</u>						
Typing Date:19/03/2015		REGION:S.W.R		COUNCIL:ISANGELE		
		DIVISION: NDIAN		Sub-division :ISANGELE		
BUDGET EXERCISE:		2015-2017		<u>FORCASTED REALISATION YEAR</u> 2017		
PERIODICITY:		3 YEARS				
SECTOR:		SOCIAL AFFAIRS				
LOCALITY:		ISANGELE MUNICIPALITY				
<u>GEOGRAPHICAL COORDINATES</u>						
X: 008.6780						
Y: 04.7772						
Z: 32m						
<u>DESCRIPTION OF PROJECTS</u>						
PROJECTS	LOCALITIES	YEAR I (2015)	YEAR II (2016)	YEAR III (2017)	SOURCE OF FINANCE	AMOUNT (FCFA)
CONSTRUCTION OF AN OFFICE	ISANGELE URBAN		✓		PIB, OTHERS	80.000.000
SUPPORT TO ORPHANS	ISANGELE URBAN	✓	✓	✓	PIB, OTHERS.	750.000
SUPPORT TO ORPHANS	MASSAKA	✓	✓	✓	PIB, OTHERS	150.000
SUPPORT TO ORPHANS	OKONAMA	✓	✓	✓	PIB, OTHERS	150.000
SUPPORT TO ORPHANS	DIBONDORIK PA	✓	✓	✓	PIB, OTHERS	150.000
SUPPORT TO ORPHANS	TINKORO	✓	✓	✓	PIB, OTHERS	150.000
SUPPORT TO ORPHANS	OPOPO	✓	✓	✓	PIB, OTHERS	150.000
SUPPORT TO ORPHANS	ALABITA	✓	✓	✓	PIB, OTHERS	150.000
SUPPORT TO ORPHANS	ATINOK	✓	✓	✓	PIB, OTHERS	150.000
SUPPORT TO ORPHANS	RIO-DE-REY	✓	✓	✓	PIB, OTHERS	150.000
SUPPORT TO ORPHANS	EKUMAMIND O	✓	✓	✓	PIB, OTHERS	150.000
SUPPORT TO ORPHANS	IDIBANYANG A	✓	✓	✓	PIB, OTHERS	150.000
SUPPORT TO ORPHANS	ISO-OBO	✓	✓	✓	PIB, OTHERS	150.000
NO.OF PROJECTS YEARLY		12	13	12		
TOTAL NO.OF PROJECTS		37				
TOTALS:		800.000	80.800.000	800.000		
GRAND TOTAL		82.400.000 FCFA				

6.4 ANNUAL INVESTMENT PLAN (AIP)

6.4.1 ELECRCITY

<u>ANNUAL INVESTMENT PLAN</u>					
Typing Date:19/03/2015		REGION:S.W.R		COUNCIL:ISANGELE	
		DIVISION: NDIAN		Sub-division: ISANGELE	
BUDGET EXERCISE:		2015		<u>FORCASTED REALISATION YEAR</u>	
PERIODICITY:		1 YEAR			
SECTOR:		ELECRCITY			
LOCALITY:		ISANGELE MUNICIPALITY		2017	
<u>GEOGRAPHICAL COORDINATES</u>					
X: 008.6780					
Y: 04.7772					
Z: 32m					
<u>DESCRIPTION OF PROJECTS</u>					
PROJECTS		LOCALITIES	YEAR I (2015)	SOURCE OF FINANCE	AMOUNT (FCFA)
INSTALLATION OF A THERMAL PLANT		ISANGELE URBAN	✓	PIB, OTHERS	500.000.000
TOTAL. OF PROJECTS		01			500.000.000
GRAND TOTAL		500.000.000 FCFA			

6.4.2 WATER

<u>ANNUAL INVESTMENT PLAN</u>				
Typing Date:19/03/2015		REGION:S.W.R		COUNCIL:ISANGELE
		DIVISION: NDIAN		Sub-division: ISANGELE
BUDGET EXERCISE:		2015		<u>FORCASTED REALISATION YEAR</u> 2017
PERIODICITY:		YEAR		
SECTOR:		WATER		
LOCALITY:		ISANGELE MUNICIPALITY		
<u>GEOGRAPHICAL COORDINATES</u>				
X: 008.6780				
Y: 04.7772				
Z: 32m				
<u>DESCRIPTION OF PROJECTS</u>				
PROJECTS	LOCALITIES	YEAR I (2015)	SOURCE OF FINANCE	AMOUNT (FCFA)
CONSTRUCTION OF A WATER CATCHMENT	ISANGELE URBAN SPACE	✓	PIB, OTHERS	260.000.000
DRILLED WELL	MASSAKA	✓	PIB, OTHERS	15.000.000
DRILLED WELL	DIBONDORIKPA	✓	PIB, OTHERS	15.000.000
DRILLED WELL	ISO-OBO	✓	PIB, OTHERS	15.000.000
DRILLED WELL	IDIBANYANGA	✓	PIB, OTHERS	15.000.000
TOTAL NO. OF PROJECTS	05		320.000.000	
GRAND TOTAL	320.000.000 FCFA			

6.4.3 SECONDARY EDUCATION

<u>ANNUAL INVESTMENT PLAN</u>				
Typing Date:19/03/2015		REGION:S.W.R		COUNCIL:ISANGELE
		DIVISION: NDIAN		Sub-division: ISANGELE
BUDGET EXERCISE:		2015		<u>FORCASTED REALISATION YEAR</u> 2017
PERIODICITY:		1 YEAR		
SECTOR:		SECONDARY EDUCATION		
LOCALITY:		ISANGELE MUNICIPALITY		
<u>GEOGRAPHICAL COORDINATES</u>				
X: 008.6780				
Y: 04.7772				
Z: 32m				
<u>DESCRIPTION OF PROJECTS</u>				
PROJECTS	LOCALITIES	YEAR I (2015)	SOURCE OF FINANCE	AMOUNT (FCFA)
COMPUTER LABORATORY	G.B.H.S ISANGELE - BATEKA	✓	PIB, OTHERS	25.000.000
RECRUITMENT OF TEACHERS	G.B.H.S ISANGELE - BATEKA	✓	PIB	4.000.000
TOTAL NO. OF PROJECTS	02			
GRAND TOTAL	29.000.000 FCFA			

6.4.4 HEALTH

<u>ANNUAL INVESTMENT PLAN</u>				
Typing Date:19/03/2015		REGION:S.W.R		COUNCIL:ISANGELE
		DIVISION: NDIAN		Sub-division: ISANGELE
BUDGET EXERCISE:		2015		FORCASTED REALISATION YEAR
PERIODICITY:		1 YEAR		
SECTOR:		HEALTH		
LOCALITY:		ISANGELE MUNICIPALITY		2017
<u>GEOGRAPHICAL COORDINATES</u>				
X: 008.6780				
Y: 04.7772				
Z: 32m				
<u>DESCRIPTION OF PROJECTS</u>				
PROJECTS	LOCALITIES	YEAR I (2015)	SOURCE OF FINANCE	AMOUNT (FCFA)
ACQUISITION OF HOSPITAL BEDS	ISANGELE URBAN	✓	PIB, OTHERS	4.000.000
TOTAL NO. OF PROJECTS	01			4.000.000
GRAND TOTAL	<u>4.000.000 FCFA</u>			

6.4.5 BASIC EDUCATION

<u>ANNUAL INVESTMENT PLAN</u>				
Typing Date:19/03/2015		REGION:S.W.R		COUNCIL:ISANGELE
		DIVISION: NDIAN		Sub-division: ISANGELE
BUDGET EXERCISE:		2015		<u>FORCASTED REALISATION YEAR</u>
PERIODICITY:		1 YEAR		
SECTOR:		BASIC EDUCATION		
LOCALITY:		ISANGELE MUNICIPALITY		
<u>GEOGRAPHICAL COORDINATES</u>				
X: 008.6780				
Y: 04.7772				
Z: 32m				
<u>DESCRIPTION OF PROJECTS</u>				
PROJECTS	LOCALITIES	YEAR I (2015)	SOURCE OF FINANCE	AMOUNT (FCFA)
COMPUTER LABORATORY	G.S ISANGELE -BATEKA	✓	PIB, OTHERS	25.000.000
RECRUITMENT OF TEACHERS	MASSAKA	✓	PIB	2.340.000
CONSTRUCTION OF 2 CLASSROOM	DIBONDORIKP A	✓	PIB, OTHERS	23.000.000
RECRUITMENT OF TEACHERS	ISO-OBO	✓	PIB	2.340.000
CONSTRUCTION OF 2 CLASSROOM	ATINOK	✓	PIB	23.000.000
RECRUITMENT OF TEACHERS	IDIBANYANGA	✓	PIB	2.340.000
CONSTRUCTION OF A STAFF RESIDENCE	G.S ISANGELE -BATEKA	✓	PIB, OTHERS	14.500.000
TOTAL NO. OF PROJECTS	07			92.520.000
GRAND TOTAL	92.520.000FCFA			

6.4.6 YOUTH AND CIVIC EDUCATION

<u>ANNUAL INVESTMENT PLAN</u>				
Typing Date:19/03/2015		REGION:S.W.R		COUNCIL:ISANGELE
		DIVISION: NDIAN		Sub-division: ISANGELE
BUDGET EXERCISE:		2015		<u>FORCASTED REALISATION YEAR</u>
PERIODICITY:		1 YEAR		
SECTOR:		CIVIC EDUCATION		2017
LOCALITY:		ISANGELE MUNICIPALITY		
<u>GEOGRAPHICAL COORDINATES</u>				
X: 008.6780				
Y: 04.7772				
Z: 32m				
<u>DESCRIPTION OF PROJECTS</u>				
PROJECTS	LOCALITIES	YEAR I (2015)	SOURCE OF FINANCE	AMOUNT (FCFA)
CONSTRUCTION OF A MULTI- PURPOSE YOUTH CENTRE(MINJEC) FIRST PHASE	ISANGELE URBAN SPACE	✓	PIB	70.000.000
TOTAL NO. OF PROJECTS	01			70.000.000
GRAND TOTAL	<u>70.000.000CFCFA</u>			

6.4.7 TRANSPORTATION

<u>ANNUAL INVESTMENT PLAN</u>					
Typing Date:19/03/2015		REGION:S.W.R		COUNCIL:ISANGELE	
		DIVISION: NDIAN		Sub-division: ISANGELE	
BUDGET EXERCISE:		2015		<u>FORCASTED REALISATION YEAR</u>	
PERIODICITY:		1 YEAR			
SECTOR:		TRANSPORTATION		2017	
LOCALITY:		ISANGELE MUNICIPALITY			
<u>GEOGRAPHICAL COORDINATES</u>					
X: 008.6780					
Y: 04.7772					
Z: 32m					
<u>DESCRIPTION OF PROJECTS</u>					
PROJECTS		LOCALITIES	YEAR I (2015)	SOURCE OF FINANCE	AMOUNT (FCFA)
AQUISITION OF TRANSPORT SEA BUS		A ISANGELE URBAN SPACE	✓	PIB, OTHERS	250.000.000
NO. OF PROJECTS YEARLY			01		250.000.000
TOTAL NO. OF PROJECTS		01			
GRAND TOTAL		<u>250.000.000CFCFA</u>			

6.4.8 AGRICULTURE

<u>ANNUAL INVESTMENT PLAN</u>					
Typing Date:19/03/2015		REGION:S.W.R		COUNCIL:ISANGELE	
		DIVISION: NDIAN		Sub-division :ISANGELE	
BUDGET EXERCISE:		2015		<u>FORCASTED REALISATION YEAR</u> 2017	
PERIODICITY:		1 YEAR			
SECTOR:		AGRICULTURE			
LOCALITY:		ISANGELE MUNICIPALITY			
<u>GEOGRAPHICAL COORDINATES</u>					
X: 008.6780					
Y: 04.7772					
Z: 32m					
<u>DESCRIPTION OF PROJECTS</u>					
PROJECTS		LOCALITIES	YEAR I (2015)	SOURCE OF FINANCE	AMOUNT (FCFA)
SUPPLY OF FARMING TOOLS AND CHIMICAL TO FARMERS AND IMPROVED CASSAVA CUTTINGS		ISANGELE URBAN	✓	PIB, OTHERS	500.000
SUPPLY OF FARMING TOOLS AND CHIMICAL TO FARMERS AND IMPROVED CASSAVA CUTTINGS		MASSAKA	✓	PIB, OTHERS.	500.000
SUPPLY OF FARMING TOOLS AND CHIMICAL TO FARMERS AND IMPROVED CASSAVA CUTTINGS		OKONAMA	✓	PIB, OTHERS	500.000
SUPPLY OF FARMING TOOLS AND CHIMICAL TO FARMERS AND IMPROVED CASSAVA CUTTINGS		DIBONDORIKP A	✓	PIB, OTHERS	500.000
TOTAL NO. OF PROJECTS		04			2.000.000
GRAND TOTAL		2.000.000 FCFA			

6.4.9 FISHERY

<u>ANNUAL INVESTMENT PLAN</u>				
Typing Date:19/03/2015		REGION:S.W.R		COUNCIL:ISANGELE
		DIVISION: NDIAN		Sub-division: ISANGELE
BUDGET EXERCISE:		2015		<u>FORCASTED REALISATION YEAR</u> 2017
PERIODICITY:		1 YEAR		
SECTOR:		FISHERY		
LOCALITY:		ISANGELE MUNICIPALITY		
<u>GEOGRAPHICAL COORDINATES</u>				
X: 008.6780				
Y: 04.7772				
Z: 32m				
<u>DESCRIPTION OF PROJECTS</u>				
PROJECTS	LOCALITIES	YEAR I (2015)	SOURCE OF FINANCE	AMOUNT (FCFA)
CONSTRUCTION OF A FISH MARKET AT NEW BEACH	BATEKA	✓	PIB, PNDP	15.000.000
CONSTRUCTION OF A FISH POND	AMOTO	✓	PIB, OTHERS.	160.000.000
TOTAL NO. OF PROJECTS	02		175.000.000	
GRAND TOTAL	175.000.000 FCFA			

6.4.10 URBAN DEVELOPMENT

<u>ANNUAL INVESTMENT PLAN</u>				
Typing Date:19/03/2015		REGION:S.W.R		COUNCIL:ISANGELE
		DIVISION: NDIAN		Sub-division: ISANGELE
BUDGET EXERCISE:		2015		<u>FORCASTED REALISATION YEAR</u>
PERIODICITY:		YEAR		
SECTOR:		URBAN DEVDPLOPMENT		2017
LOCALITY:		ISANGELE MUNICIPALITY		
<u>GEOGRAPHICAL COORDINATES</u>				
X: 008.6780				
Y: 04.7772				
Z: 32m				
<u>DESCRIPTION OF PROJECTS</u>				
PROJECTS	LOCALITIES	YEAR I (2015)	SOURCE OF FINANCE	AMOUNT (FCFA)
CONSTRUCTION OF THE ASSISTANT D.O'S RESIDENCE	ISANGELE URBAN SPACE	✓	PIB, OTHERS	25.000.000
CONSTRUCTION OF LOW COST HOUSES	ISANGELE URBAN SPACE	✓	PIB, OTHERS	120.000.000
TOTAL NO. OF PROJECTS	02		145.000.000	
GRAND TOTAL	<u>145.000.000 FCFA</u>			

6.4.11 ENVIRONMENT

<u>ANNUAL INVESTMENT PLAN</u>				
Typing Date:19/03/2015		REGION:S.W.R		COUNCIL:ISANGELE
		DIVISION: NDIAN		Sub-division: ISANGELE
BUDGET EXERCISE:		2015		<u>FORCASTED REALISATION YEAR</u>
PERIODICITY:		1 YEAR		
SECTOR:		ENVIRONMENT		2017
LOCALITY:		ISANGELE MUNICIPALITY		
<u>GEOGRAPHICAL COORDINATES</u>				
X: 008.6780				
Y: 04.7772				
Z: 32m				
<u>DESCRIPTION OF PROJECTS</u>				
PROJECTS	LOCALITIES	YEAR I (2015)	SOURCE OF FINANCE	AMOUNT (FCFA)
TREE PLANTING	ISANGELE URBAN	✓	PIB, OTHERS	5.000.000
TOTAL NO. OF PROJECTS	01		5.000.000	
GRAND TOTAL	<u>15.000.000 FCFA</u>			

6.4.12 PUBLIC WORKS

<u>ANNUAL INVESTMENT PLAN</u>				
Typing Date:19/03/2015		REGION:S.W.R		COUNCIL:ISANGELE
		DIVISION: NDIAN		Sub-division: ISANGELE
BUDGET EXERCISE:		2015		<u>FORCASTED REALISATION YEAR</u>
PERIODICITY:		1YEAR		
SECTOR:		PUBLIC WORKS		2017
LOCALITY:		ISANGELE MUNICIPALITY		
<u>GEOGRAPHICAL COORDINATES</u>				
X: 008.6780				
Y: 04.7772				
Z: 32m				
<u>DESCRIPTION OF PROJECTS</u>				
PROJECTS	LOCALITIES	YEAR I (2015)	SOURCE OF FINANCE	AMOUNT (FCFA)
COUNCIL ROAD MAINTENANCE	ISANGELE URBAN SPACE	✓	PIB	27.778.000
CONSTRUCTION OF BRIDGES OVER BIG & SMALL EKA-BUM STREAMS	ISANGELE URBAN SPACE - AMOTO	✓	PIB	90.000.000
TOTAL NO. OF PROJECTS	02		117.778.000	
GRAND TOTAL	<u>117.778.000FCFA</u>			

6.4.13 WOMEN ENPOWERMENT AND THE FAMILY

<u>ANNUAL INVESTMENT PLAN</u>				
Typing Date:19/03/2015		REGION:S.W.R		COUNCIL:ISANGELE
		DIVISION: NDIAN		Sub-division: ISANGELE
BUDGET EXERCISE:		2015		<u>FORCASTED REALISATION YEAR</u>
PERIODICITY:		1 YEAR		
SECTOR:		WOMEN ENPOWERMENT AND THE FAMILY		
LOCALITY:		ISANGELE MUNICIPALITY		2017
<u>GEOGRAPHICAL COORDINATES</u>				
X: 008.6780				
Y: 04.7772				
Z: 32m				
<u>DESCRIPTION OF PROJECTS</u>				
PROJECTS	LOCALITIES	YEAR I (2015)	SOURCE OF FINANCE	AMOUNT (FCFA)
SUPLY OF SIX(6) SEWING MACHINES	ISANGELE URBAN	✓	PIB, PNDP	4.000.000
SUPLY OF SIX(6) COMPUTERS		✓	PIB, OTHERS.	6.000.000
SUPLY OF ONE(1) PHOTOCOPIER		✓	PIB, OTHERS	5.000.000
SUPLY OF TWO(2) FRIDGES		✓	PIB, OTHERS	1.000.000
SUPLY OF FOUR(4) BEDS		✓	PIB, OTHERS	3.000.000
SUPLY OF KICHEN EQUIPMENTS		✓	PIB, OTHERS	2.000.000
TOTAL NO. OF PROJECTS	06		21.000.000	
GRAND TOTAL	<u>21.000.000 FCFA</u>			

6.4.14 SOCIAL AFFAIRS

ANNUAL INVESTMEN PLAN				
Typing Date:19/03/2015	REGION:S.W.R		COUNCIL:ISANGELE	
	DIVISION: NDIAN		Sub-division :ISANGELE	
BUDGET EXERCISE:	2015		FORCASTED REALISATION YEAR	
PERIODICITY:	1 YEAR			
SECTOR:	SOCIAL AFFAIRS			
LOCALITY:	ISANGELE MUNICIPALITY			
GEOGRAPHICAL COORDINATES				
X: 008.6780				
Y: 04.7772				
Z: 32m				
DESCRIPTION OF PROJECTS				
PROJECTS	LOCALITIES	YEAR I (2015)	SOURCE OF FINANCE	AMOUNT (FCFA)
SUPPORT TO ORPHANS	ISANGELE URBAN	✓	PIB, OTHERS.	250.000
SUPPORT TO ORPHANS	MASSAKA	✓	PIB, OTHERS	50.000
SUPPORT TO ORPHANS	OKONAMA	✓	PIB, OTHERS	50.000
SUPPORT TO ORPHANS	DIBONDORIKP A	✓	PIB, OTHERS	50.000
SUPPORT TO ORPHANS	TINKORO	✓	PIB, OTHERS	50.000
SUPPORT TO ORPHANS	OPOPO	✓	PIB, OTHERS	50.000
SUPPORT TO ORPHANS	ALABITA	✓	PIB, OTHERS	50.000
SUPPORT TO ORPHANS	ATINOK	✓	PIB, OTHERS	50.000
SUPPORT TO ORPHANS	RIO-DE-REY	✓	PIB, OTHERS	50.000
SUPPORT TO ORPHANS	EKUMAMIND O	✓	PIB, OTHERS	50.000
SUPPORT TO ORPHANS	IDIBANYANGA	✓	PIB, OTHERS	50.000
SUPPORT TO ORPHANS	ISO-OBO	✓	PIB, OTHERS	50.000
TOTAL NO.OF PROJECTS	12		800.000	
GRAND TOTAL	800.000 FCFA			

6.5 ESTIMATED COST OF C.D.P

S/N	SECTOR	NO. OF PROJECTS YEAR I(2015)	NO. OF PROJECTS YEAR II(2016)	NO. OF PROJECTS YEAR III(2017)	AMOUNT FCFA
01	ELECTRICITY	01	05	05	880.000.000
02	WATER	04	04	02	410.000.000
03	SECONDARY EDUCATION	02	01	01	144.000.000
04	HEALTH	01	05	05	604.000.000
05	BASIC EDUCATION	02	02	03	207.520.000
06	YOUTH AND CIVIC EDUCATION	01	01	00	130.000.000
07	TRANSPORTATION	01	00	00	250.000.000
08	AGRICULTURE	04	04	04	6.000.000
09	FISHERY	02	03	02	187.500.000
10	URBAN DEVELOPMENT	02	01	00	299.500.000
11	ENVIRONMENT	01	01	01	15.000.000
12	PUBLIC WORKS	02	02	01	448.334.000
13	WOMEN ENPOWERMENT AND THE FAMILY	06	01	00	22.000.000
14	SOCIAL AFFAIRS	12	13	12	82.400.000
NO. OF PROJECTS YEARLY		49	43	38	3.436.254.000
TOTAL NO. OF PROJECTS FOR 3 YEARS		<u>131</u>			
GRAND TOTAL		<u>3.686.254.000FCFA</u>			

THE C.D.P FOR THREE YEARS IS ESTIMATED AT THE SUM OF THREE (3) BILLION, SIX HUNDRED AND EIGHTY-SIX MILLION, TWO HUNDRED AND FIFTY FOUR THOUSANDS FRANCS.

TOTAL NUMBER OF PROJECTS PROGRAMMED FOR THREE (3) YEARS IS, ONE HUNDRED AND THIRDTY-ONE PROJECTS.

6.6 Optimizing and/or Mitigation measures

sector	micro project types contained in the triennial plan	socio-environmental quality improvement measures (optimisation)	socio-environmental mitigation measures
1.Basic Education	Construction of classrooms	Sensitization campaigns for site workers and beneficiary populations	Planting or replanting of trees around the works Planting of cover grass in affected zones Obtain land donation attestation signed by village chief and the proprietor of the site
2.Secondary Education	Construction of an Administrative Block	Sensitization campaigns for site workers and beneficiary populations	Planting or replanting of trees around the works Planting of cover grass in affected zones
3. ELECTRICITY	Acquisition of THERMAL PLANT	Set up and train Management committee Employment	Plant cover grass Avoid deposits of waste products in rivers Sensitization on STDs and HIV/AIDS
4. WATER	Construction of a WATER CATCTMENT	Sensitise the populations Set up and train Management Committee	Planting of cover grass in affected zones Latrines 50 metres away Build Secure fence around Treat water regularly.
5. LIVESTOCK and FISHERIES	Construction of a modern fish pond	Sensitization campaigns for site workers and beneficiary populations Set up and train Management Committee	replanting of trees around the works Planting of cover grass in affected zones 50 metres away from water points Build secure fence around the slaughterhouse Disinfect site regularly.
6.ENVIRONMENT AND NATURE	Acquisition and Preparation of dumping sites	Sensitization campaigns for site workers and populations	Obtain land donation attestation signed by village chief and the proprietor of the site Avoid deposits of waste products in rivers
7.YOUTH AFFAIRS CIVIC EDUCATION	Construction of a Youth Centre	Sensitization campaigns for site workers and beneficiary populations	Planting of trees around the works
8.Public works	Construction of roads(farm to market roads	Planting of trees along the road Construction of drainage system Watering of road during construction	High security control Sensitisation of youths Sensitise on road safety measures

6.7. Optimization and Mitigation measures

Type of micro project in the 2015– 2017 investment plan	Mitigation measures of negative environmental impacts	Mitigation measures of negative social impacts
rehabilitation of Isangele water supply system	Areas dugged for construction of structures and pipeline will be backfilled Waste from structures will be directed to soak away pits ; through the availability of water supply	Sensitisation of the population on proper hygiene and sanitation
Acquisition and installation of THALMA PLANT	Filter (carbon filter) to reduce pollution	High security control
1. Farmers' shop for agric chemicals and implements 2. Improved cassava cuttings	Sensitise the council on proper use of chemicals Cassava nursery	Sensitisation of the population on proper use of chemical products
Construction of slaughter houses	Planting of trees	Creation of employment
Construction of roads	Planting of trees along the road Construction of drainage system Watering of road during construction	Sensitise on road safety measures
Construction of an embarkment	Areas dug should be refilled	Creation of employment
Construction of classrooms	Areas dug should be backfilled and trees planted	More allocation of land for play ground
Construction of beach market	Planting of trees and flowers Installation of garbage cans	Sensitization of the population Reinforcement of security measures
Acquisition and Preparation of dumping sites	Areas dugged for construction of structures and pipeline will be backfilled	Sensitisation of the population on proper hygiene and sanitation
Creation of council layout	Replant onamental trees Refill dug areas	Proper town planning ensured creation of streets in the new lay out
Construction works on low cost houses	Planting of trees Areas dugged for construction of structures and pipeline will be backfilled	Creation of employment
Construction of Health POSTS	Planting of trees	Sensitisation of the population on proper health habits
Construction staff quarters	Areas dug will be backfilled Planting of Trees Trash Cans will be installed	Sensitize the population Train staff on team building

6.8 Operational plan for vulnerable population

No.	Projects	Activities	Products/ Indicators Results	Persons responsibl e	Periods			Resources			Funding Sources
					2015	2016	2017	Human	Material	Financial	
	Support to the Vulnerable populations	Distribution of educational materials, food, medicines and equipment.	Books and didactic materials, Food, Medicines, tricycles, eye glasses and money	Mayor	Support to OVCs and Widows	Support to the physically disabled	Support to the elderly and poor	Council staff NGOs	Food, books, equipment and money	40.000.000F	PIB PNDP Council and Partners

7. MONITORING AND EVALUATION MECHANISM

S/N	NAMES	FUNCTION	CONTACT
1	CHIEF ANONO LINUS MOTITI	PRESIDENT	696.696.212
2	ANKI AMBO DANIEL	S.G	678.056.214
3	ENUMAH EVELYN USIM	TREASURER	672.426.697
4	NKOYO BRIDGET	FINANCIAL SECRETARY	674.976.759
5	NJOMO ALAIN	MEMBER	670.202.698
6	OKON HENRY BASSEY	MEMBER	672.674.391

Missions of the committee:

The committee has the following attributions:

1. To define the orientations and strategy of the elaboration of the COUNCIL DEVELOPMENT PLAN (CDP)
2. To ensure the proper conduct of the planning process
3. To ensure for the full and effective participation of the populations throughout the planning stages.

7.1. FOLLOW UP PLAN, TOOLS AND MONITORING FREQUENCY

The following monitoring tools will be used separately or in combination

1. The monitoring book
2. The building site monitoring book;
3. Surveys;
4. Periodic meetings;
5. Progress reports
6. Schedule;
7. Indicators;
8. The rating scale.

Monitoring Duties and Tasks

DUTIES	Tasks	Tools	Expected results	Frequency	Actors
Participatory Management of Information on the CDP implementation	Collecting data	Data collection cards Activity monitoring cards	Data collection cards	Monthly	C.D.O
	Drawing and sending reports	Data collection charts	Reports	Quarterly	C.D.O
Technical support to Communities	Training in M&E tools	Participants Handbook Facilitators Handbook Data collection tools	Trained Agents	Monthly	C.D.O

7.2. REVIEW MECHANISM

7.2.1. Review Mechanism of the CDP

Review Mechanism of CDP

Review of CDP Meeting	Diagnosis Planning Resource mobilization Programming Implementation	Updated Problems and solutions Updated Micro projects	Mayor,C.DO COMES Stakeholders	Check books Communication
-----------------------	---	--	-------------------------------------	------------------------------

7.2.2. Review Mechanism of the AIP

Review Mechanism of AIP

Main Activity	Task	Expected result	Actor	Tools	
Evaluation Meeting of Investment plans	Planned activities. Micro project technical document	Rate of execution and Efficiency of execution known	Mayor, Dev.t Officer Stakeholders	Check books Direct observation Communication Record of purchases Records of job completion	

8 .THE COUNCIL

Typing Date:19/03/2015		REGION: S.W.R	COUNCIL: ISANGELE
		NDIAN:NDIAN	Sub-division: ISANGELE
MEN	11,673	<u>EXI STENCE OF MARGINAL POPULATION</u> ✓ YES: NO:	
WOMEN	14,131		
CHILDREN	11,482		
POPULATION SIZE	37,286		
SURFACE AREA	765 km2	<u>COUNCIL HAVING A CDP</u> ✓ YES: NO:	
NUMBER OF VILLAGES	22		
YEAR OF CREATION	1978		
		<u>CDP BEEN PUT IN PLACE</u> ✓ YES: NO:	

9. INFORMATION AND COMMUNICATION PLAN ON THE IMPLEMENTATION OF THE CDP

Information on the implementation of the CDP shall be made available to the public through radios, newspapers and television network

10. CONCLUSION

The CDP will contribute to the creation of an enabling environment in which Isangele will take advantage to build on its strengths and opportunities, assets and potentials and to eliminate its constraints and problems, particularly those relating to weak governance and inadequate infrastructure, deficiency in production factors and ill adapted human resources. With proper focus on the growth and employment dual track approach the overall objective of Isangele contributing to the general efforts of Cameroon achieving its vision 2035, the GESP, the MDGs and the call of the President to make Cameroon an emergent nation will result in a significant human development and reduction in poverty, misery and suffering of the populations. With regard to infrastructure development the CDP has emphasized on the necessity to build the economic base i.e. electricity, roads, water, markets, parks, telephone network, housing and land and the council will take advantage of its strategic position between in the Bakassi peninsular between Ndian and Nigeria to become a frontier market.

This CDP, as a governance framework, will permit Isangele Council to build its capacity as a facilitator and regulator of social and economic activities to ensure the participation of all citizens in its realization, monitoring and evaluation; transparent and efficient finance management; and an improved business climate.

The Isangele Council will thus consolidate the results achieved concerning the extension of the construction of roads to density the road network and the farm to market roads thus opening up of the agricultural areas to ease the populations access to markets and basic social services. The CDP will improve electricity network and water supply to the urban and rural areas and the sanitation policy.

Through the micro projects and activities to develop the production factors, Agriculture, forestry and tourism with their enormous assets and potentials, will create sustainable growth, wealth and employment to ensure the improvement of the quality and standard of living of the population.

11). ANNEXES

